



120 Robin Road, Semaphore South


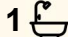

## Solid Brick 1960's Corner Block Home Opposite Golf Course~

Perfectly positioned in a highly sought-after location, this solid-brick 1960s home offers incredible potential in a prime coastal setting. Whether you're looking to renovate, extend or redevelop (subject to consents), this property provides the foundation for your next exciting project.

Set on a generous corner allotment directly opposite the Semaphore South Golf Course, the home is neat and tidy throughout with solid bones and flexible spaces ready for transformation.

Features include:

- Three bedrooms, bedroom 1 & 2 with ceiling fans
- Open plan lounge and dining
- Neat and tidy kitchen with gas cooking
- Original bathroom with separate bathroom shower and WC
- Detached rumpus or studio ideal for a home office or teenagers retreat with ceiling fan
- Undercover outdoor entertaining area
- Enclosed rear yard
- Double carport
- High ceilings

3  1  2 

**FOR SALE**  
Sold at Auction

### AGENTS

Rosemary Auricchio  
0418 656 386  
[rosemarya@ljhookerwestlakes.com.au](mailto:rosemarya@ljhookerwestlakes.com.au)

Nick Carpinelli  
0403 347 849  
[nickc@ljhookerwestlakes.com.au](mailto:nickc@ljhookerwestlakes.com.au)

### AGENCY

LJ Hooker West Lakes | Henley Beach  
(08) 8347 3666

All information contained therein is gathered from relevant third parties sources.  
We cannot guarantee or give any warranty about the information provided.  
Interested parties must rely solely on their own enquiries.

 **LJ Hooker**

- Gas heating and air-conditioning
- Valuable corner frontage with potential development scope (STCC)

Nestled in the heart of Semaphore South, this beachside location blends lifestyle with convenience. The golf course sits directly opposite, while the sparkling shoreline of Semaphore Beach and the vibrant café culture of Semaphore Road are just moments away. Families are well catered for, with zoning for Westport Primary School, and easy access to respected private schooling options including Portside Christian College and Mount Carmel College. Westfield West Lakes, the Port Adelaide shopping precinct, sporting clubs, coastal trails, and reliable public transport are all within easy reach-making this a standout location for both relaxed living and future growth.

For more information, please contact Rosemary Auricchio on 0418 656 386 or Nick Carpinelli on 0403 347 849

**Disclaimer:**

Any prospective purchaser should not rely solely on 3rd party information providers to confirm the details of this property or land and are advised to enquire directly with the agent in order to review the certificate of title and local government details provided with the completed Form 1 vendor statement. All land sizes quoted are an approximation only and at the purchaser's discretion to confirm. All information contained herein is gathered from sources we consider to be reliable. However, we cannot guarantee or give any warranty about the information provided. Interested parties must solely rely on their own enquiries. RLA 175322

**MORE DETAILS**

Property ID	4ZUFFE8
Property Type	House
House Size	116 m2
Land Area	660 m2
Including	Study Outdoor Entertaining Secure Parking Liveability

**Rosemary Auricchio 0418 656 386**

Sales Partner | [rosemarya@ljhookerwestlakes.com.au](mailto:rosemarya@ljhookerwestlakes.com.au)

**Nick Carpinelli 0403 347 849**

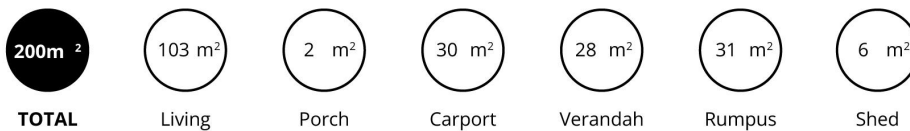
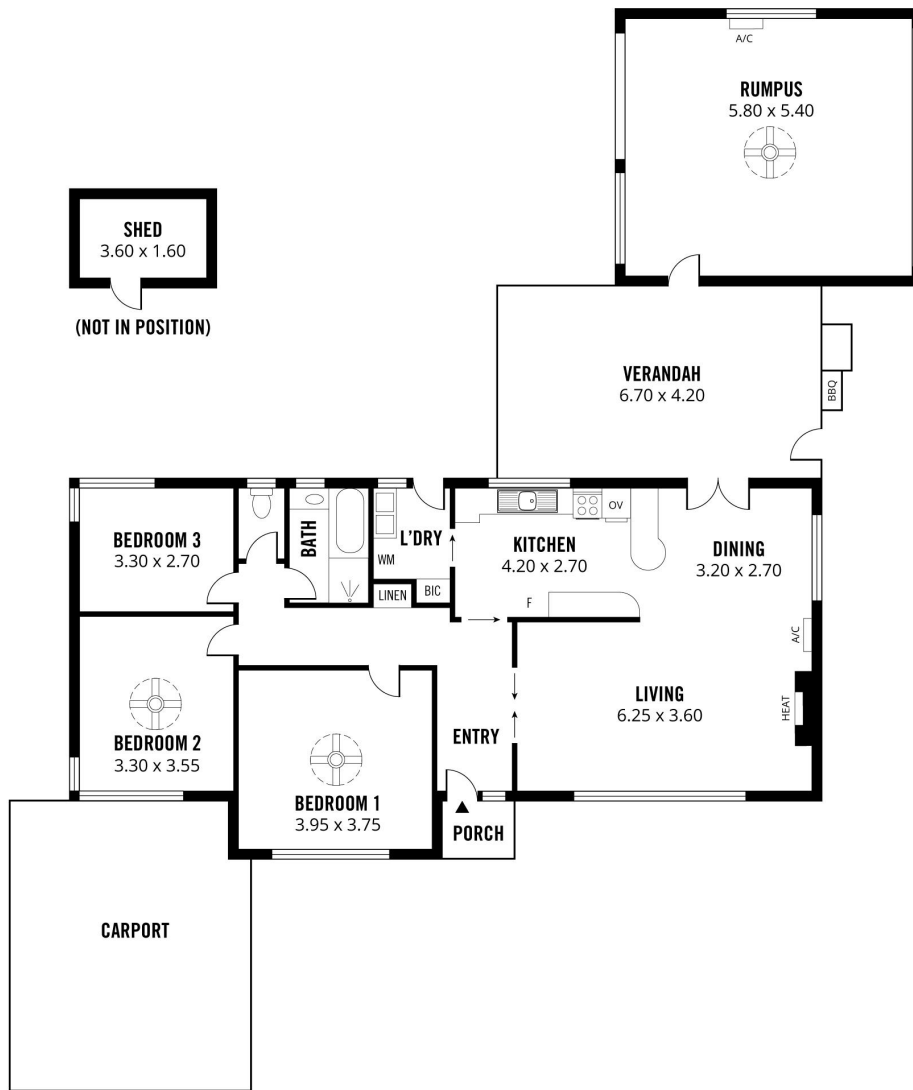
Sales Representative | [nickc@ljhookerwestlakes.com.au](mailto:nickc@ljhookerwestlakes.com.au)

**LJ Hooker West Lakes | Henley Beach (08) 8347 3666**

139 Tapleys Hill Road, SEATON SA 5023

[westlakes.ljhooker.com.au](http://westlakes.ljhooker.com.au) | [hello@ljhookerwestlakes.com.au](mailto:hello@ljhookerwestlakes.com.au)





Scale in metres. This drawing is for illustration purposes only. All measurements are approximate and details intended to be relied upon should be independently verified.

Produced by **The Fotobase Group**