



Seaforth, 8 David Place

Over 1000 m2 Level Land, Spectacular Views, 4 Bedrooms

This is a very rare, unique and valuable offering!

Placed on 1,031sqm of absolute premium near-level land with awe-inspiring Middle Harbour and city skyline panoramas forming its backdrop, this original residence presents the opportunity to renovate and expand or the perfect blank canvas to design the ultimate designer statement residence (STCA). Positioned atop of Seaforth Bluff in one of the area's most prestigious and tightly held cul-de-sacs.

Selling for the first time since it was built 70 years ago —the opportunity of a lifetime
Mid-century modern design aesthetics, full brick construction and walls of glass
Spectacular never-to-be-built-out views sweep from the city skyline to Bantry Bay
Views take in yacht-sprinkled bays lined by bushland and twilight yacht races
Mesmerising sunsets fade to dazzling city and North Sydney Skyline nightlights
Living spaces with spellbinding Middle Harbour views



Disclaimer: All information contained therein is gathered from relevant third parties sources. We cannot guarantee or give any warranty about the information provided. Interested parties must rely solely on their own enquiries.



For Sale
Guide \$5,500,000

View
ljhooker.com.au/1960F78

Contact
Glen Wirth
0411 249 955
girth@ljhseaforth.com.au
Tim Wirth
0421 997 845
tim@ljhseaforth.com.au

LJ Hooker Seaforth
(02) 9948 7080

Separate dining room with view, multiple French doors open to the rear terrace
 Two double bedrooms, two further bedrooms and a study
 Sunny rear terrace with magical views steps down to a near-level rear lawn
 Sun trap rooftop terrace with panoramic Middle Harbour and city skyline vistas
 Established landscaped gardens back onto a leafy council environmental zone
 Automatic double lock-up garage with internal access

More About this Property

Property ID	1960F78
Property Type	House
Land Area	1031 m2
Including	Study Toilets (2)

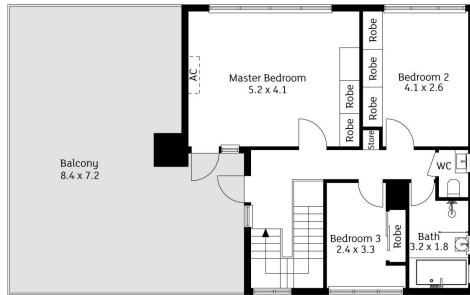
Glen Wirth 0411 249 955
 Principal | gwirth@ljhseaforth.com.au
Tim Wirth 0421 997 845
 Principal | tim@ljhseaforth.com.au

LJ Hooker Seaforth (02) 9948 7080
 553 Sydney Road, SEAFORTH NSW 2092
 seaforth.ljhooker.com.au | seaforth@ljhseaforth.com.au

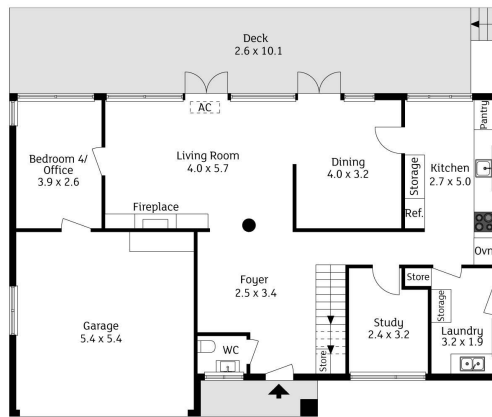


Disclaimer: All information contained therein is gathered from relevant third parties sources.
 We cannot guarantee or give any warranty about the information provided. Interested parties must rely solely on their own enquiries.

LJ Hooker Seaforth
(02) 9948 7080



First Floor



Ground Floor



Site Plan

8 David Place, Seaforth

The site plan is not to scale. Bushes and trees are placed for illustration purposes.
Plans should not be relied on. Interested parties should make and rely on their own enquiries.

LJ Hooker
Seaforth

Produced by **DIAKRIT**



LJ Hooker Seaforth
(02) 9948 7080

Disclaimer: All information contained therein is gathered from relevant third parties sources.
We cannot guarantee or give any warranty about the information provided. Interested parties must rely solely on their own enquiries.