



15 Prince Edward Road, Seaforth

Sumptuous Tropical Sanctuary with Leafy Vistas

Retaining its inherent coastal ambience throughout a streamlined contemporary reimagining, this gorgeous residence provides an enchanting family sanctuary in a sought-after, peaceful leafy pocket. Showcasing living spaces on all three levels, it's layout is perfect for families with teenagers seeking separation. The property features a sleek stone island kitchen, a whole-floor parents' retreat and easy flow to private rear decks with captivating leafy views. Placed on 518.5 sqm of beautifully landscaped tropical gardens with gently sloping rear lawns, it is a short stroll to city buses, parks, playgrounds, bush trails and Balgowlah North Public School.

- Alluring panelled facade set behind an enclosed lawn and tropical gardens
- A covered boardwalk leads to a private sunny verandah by the front door
- Bright and breezy interiors are enhanced by high ceilings and retractable glass
- Generous living space opens via glass bi-folds to a leafy entertainment deck
- The large dining room features a bi-fold window opening to the front verandah
- Sleek stone island kitchen with a stainless steel gas stove and

5 🚗 2 🚗 1 🚗

AUCTION

Sat 11th Apr @ 11:00AM

VIEW

Wed 8th Apr @ 11:00AM - 11:30AM

AGENTS

Tim Wirth
0421 997 845
tim@ljhseaforth.com.au

Tori Hand
0431 615 911
tori@ljhseaforth.com.au

AGENCY

LJ Hooker Seaforth
(02) 9948 7080

All information contained therein is gathered from relevant third parties sources. We cannot guarantee or give any warranty about the information provided. Interested parties must rely solely on their own enquiries.



- dishwasher
- Parents' retreat with a walk-in robe and a gleaming white ensuite with a corner spa
- A media lounge with a fitted wall unit forms part of the whole floor parents' retreat
- Lower floor family room opens to a sunny deck and fully enclosed rear lawns
- Four double bedrooms with built-ins are spread evenly over the two lower levels
- Modern full family bathroom, internal laundry with powder room on the main level
- Select timber flooring, hinged plantation shutters and a CCTV system
- Air-conditioning, ceiling fans, mounted wall heaters and gas heating outlets
- 220m to city buses, 600m to playgrounds at Woolgoolga Reserve or Seaforth Oval
- 650m to the primary school, minutes to village shops and Manly Dam bush trails
- Moments from Clontarf Beach and Manly's vibrant dining hub and beaches
- Gated access to a carport, internal storage and an aluminium garden shed

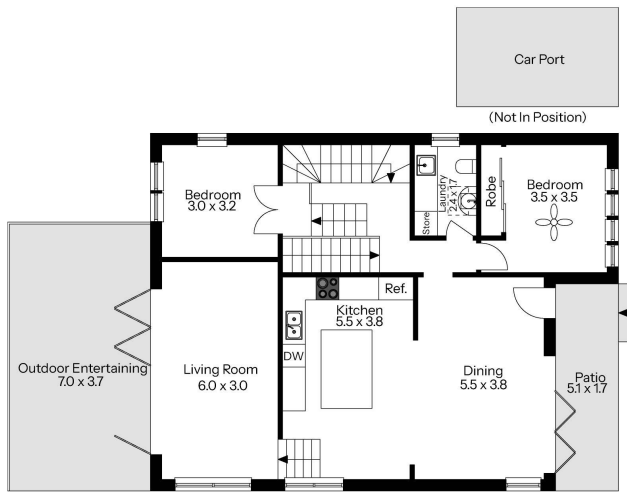
MORE DETAILS

Property ID	19GJF78
Property Type	House
Land Area	518.5 m2
Including	Ensuite
	Air Conditioning
	Toilets (1)
	Car Parking - Surface
	Close to Schools
	Close to Transport
	Heating

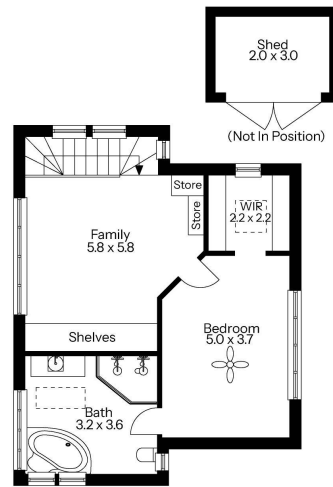
Tim Wirth 0421 997 845
Principal | tim@ljhseaforth.com.au
Tori Hand 0431 615 911
Sales Associate | tori@ljhseaforth.com.au

LJ Hooker Seaforth (02) 9948 7080
553 Sydney Road, SEAFORTH NSW 2092
seaforth.ljhooker.com.au | seaforth@ljhseaforth.com.au

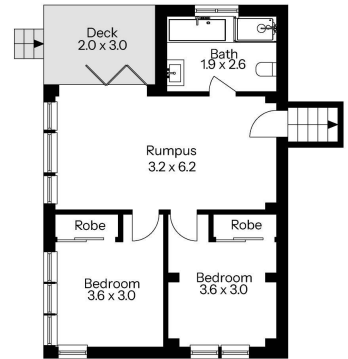




First Floor



Second Floor



Ground Floor

15 Prince Edward Road, Seaforth

The floor plan is not to scale; measurements are indicative and in metres. Exterior elements are not in position. Plans should not be relied on. Interested parties should make and rely on their own enquiries.

APPROXIMATE AREAS	
Internal Area	199 sqm
Land Area	518.5 sqm

 **LJ Hooker**
Seaforth

Produced by DIAKRIT