



## Seaforth, 15 Bligh Crescent

### Amazing Waterfront Lifestyle!

Superbly constructed in full brick and concrete with soaring sheets of glass bringing the stunning close water views to life. With drive in access, located in a sought after cul de sac, this property offers the ultimate waterfront lifestyle. Imagine kayaking in the morning, catching a fresh fish for dinner, sailing with the kids or setting off on your cruiser moored in your own private deepwater marina berth.

The views are breathtaking by day and by night.

Accommodation is 4 bedrooms, main with spa ensuite & walk in robe, plus the guest room, view swept living areas, balconies and terraces. His and her home offices, 4 bathrooms and a sun filled kitchen with large eat in area.

Inspect and be impressed!

- The residence rises metres from the water's edge to heighten the harbourfront experience

- Ready to move in or be enhanced overtime.

5 

4 

2 

**For Sale**  
\$6,900,000

**View**  
[ljhooker.com.au/196GF78](http://ljhooker.com.au/196GF78)

**Contact**  
**Glen Wirth**  
0411 249 955  
[gwirth@ljhseaforth.com.au](mailto:gwirth@ljhseaforth.com.au)

**Tim Wirth**  
0421 997 845  
[tim@ljhseaforth.com.au](mailto:tim@ljhseaforth.com.au)



**LJ Hooker Seaforth**  
**(02) 9948 7080**

**Disclaimer:** All information contained therein is gathered from relevant third parties sources. We cannot guarantee or give any warranty about the information provided. Interested parties must rely solely on their own enquiries.

- Generous L-shaped living and dining area flows to a wraparound harbour-view terrace
- Large open plan black granite kitchen with breakfast bar, dishwasher and harbour views
- Casual dining area with a glass atrium capturing northeast sun opens to a private balcony
- Easy side access to the guest retreat and waterfront, new DA approval for an internal lift
- Family room or guest retreat with a kitchenette, two bedrooms and a bathroom
- Glass sliders open to a waterside terrace with an infinity pool and landscaped gardens
- Double bedrooms with built-ins, his and her home offices or optional further bedrooms
- Whole floor parent's retreat with study or dressing room, ensuite and waterside balcony
- White marble-tiled bathrooms with granite vanitytops include two spas and harbour views
- Oversized boatshed, deck, water, lighting and power and a roller door to a landing/skid



## More About this Property

<b>Property ID</b>	196GF78
<b>Property Type</b>	House
<b>Including</b>	Ensuite Study Air Conditioning Built-in-Robes Area Views Close to Shops Close to Transport Kitchenette Pool Water Front Water Views

### Glen Wirth 0411 249 955

Principal | gwirth@ljhseaforth.com.au

### Tim Wirth 0421 997 845

Principal | tim@ljhseaforth.com.au

### LJ Hooker Seaforth (02) 9948 7080

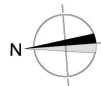
553 Sydney Road, SEAFORTH NSW 2092

seaforth.ljhooker.com.au | seaforth@ljhseaforth.com.au

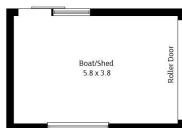


**LJ Hooker Seaforth**  
**(02) 9948 7080**

**Disclaimer:** All information contained therein is gathered from relevant third parties sources. We cannot guarantee or give any warranty about the information provided. Interested parties must rely solely on their own enquiries.

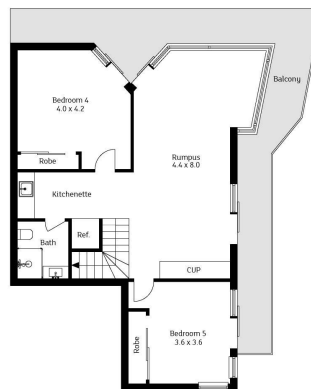


Upper Level

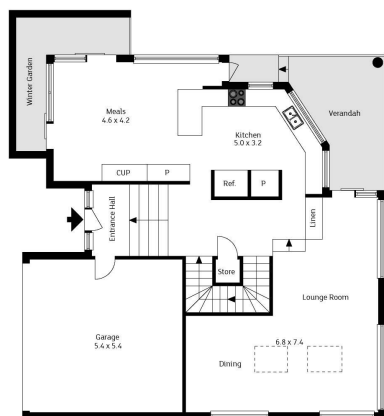


Boat Shed

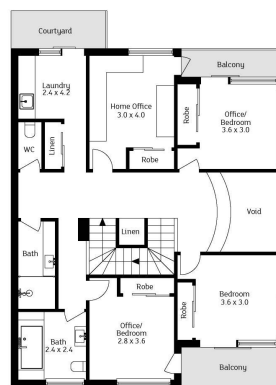
(Not In Position)



Level Three



Entrance Level



Level Two

## 15 Bligh Crescent, Seaforth

The floor plan is not to scale; measurements are indicative and in metres. Exterior elements are not in position. Plans should not be relied on. Interested parties should make and rely on their own enquiries.

**LJ Hooker**  
**Seaforth**

Produced by DIAKRIT