



55 Thompson Street, Scotland Island

5 🏠 2 🚿 0 🚗

Paradise on Pittwater

FOR SALE
Guide \$1,500,000

AGENTS
Juliet Wills
0438 418 833
jwills@ljhmv.com.au

AGENCY
LJ Hooker Mona Vale
(02) 9979 8000

The pictures do not do this view justice. With its wide frontage to the water and huge deck with spa, theatre, and pizza oven, it is the perfect place to entertain this summer. Watch boats glide by, and listen to the sounds of nature all around you. This oasis feels like your on holiday everyday yet it's just a short ferry ride and then less than an hour to the Sydney CBD.

This near level block with dual street frontage offers privacy, and seclusion. With five bedroom, two bathrooms, and multiple entertaining decks, there's space for all the family and visitors or separate downstairs for dual living.

A five minute ferry ride from Church Point, and you're on the island. Situated in the heart of Pittwater and surrounded by some of the most beautiful scenery on earth, from Ku-ring-gai National Park, to beachside suburbs, Avalon, Palm Beach & Newport and West Head. You are surrounded by spectacular scenery.

Scotland Island hosts regular festivals, drama and music events. From Shakespeare to locally written and performed plays, jazz and rock, the garden festival, Christmas markets and Carols evenings to the famous Scotland Island dog race. Bootcamp is free, island swims and runs, fire shed dinners, and kids activities.

All information contained therein is gathered from relevant third parties sources. We cannot guarantee or give any warranty about the information provided. Interested parties must rely solely on their own enquiries.

 **LJ Hooker**

For more information about Scotland Island copy the link here
<https://www.scotlandisland.org.au/>

Or click on the video link below

Disclaimer:

All information contained herewith, including but not limited to the general property description, price and the address, is provided to LJ Hooker Mona Vale by third parties. We have obtained this information from sources we believe to be reliable; however, we cannot guarantee its accuracy. The information contained herewith should not be relied upon and you should make your own enquiries and seek advice in respect of this property or any property on this website.

MORE DETAILS

| | |
|---------------|---------|
| Property ID | 2VV2F6K |
| Property Type | House |
| Land Area | 1379 m2 |

Juliet Wills 0438 418 833

Licensed Real Estate Agent | jwills@ljhmv.com.au

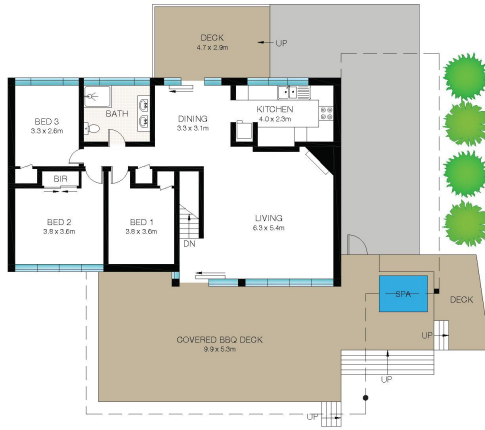
LJ Hooker Mona Vale (02) 9979 8000

3/18 Bungan Street, MONA VALE NSW 2103
monavale.ljhooker.com.au | monavale@ljhmv.com.au

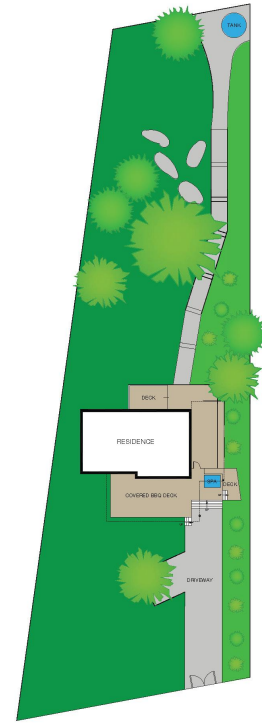




LOWER GROUND FLOOR



GROUND FLOOR



SITE PLAN (NOT TO SCALE)

0 1 2 3 4 5

This Floor Plan was prepared by WWW.CRYINGOUTLOUD.COM.AU for illustration purposes only. This document does not constitute any part of an offer or contract. Dimensions are approximate only. Copyright © 2024 Crying Out Loud. All Rights Reserved.

INT: 152m²
EXT: 153m²



55 Thompson Street, Scotland Island