



15 Thompson Street, Scotland Island

## Peaceful Pittwater Haven with Separate Apartment & Garden Studio

Hidden among towering spotted gums and enjoying a coveted north-east aspect, this beautifully positioned Scotland Island home captures the essence of Pittwater living - light, space, privacy and connection to nature.

From the moment you arrive, the home reveals an inviting sense of retreat. Expansive open-plan living and dining spaces flow effortlessly onto wide entertaining decks on two levels, where filtered views of Pittwater shimmer through the trees and sea breezes drift through the home.

Thoughtfully designed for versatility, the residence features three generous living zones, creating flexibility for families, guests or work-from-home living. The master suite with ensuite enjoys peaceful separation, while upstairs offers two additional bedrooms, a bathroom and family living area.

Adding further appeal is a fully self-contained lower-level apartment with its own entrance and deck, ideal for guest accommodation,

4 2 0

**FOR SALE**  
\$1,400,000

**VIEW**  
By Appointment

**AGENTS**  
Lachlan Elder  
0418 224 180  
lelder@ljhmv.com.au

Juliet Wills  
0438 418 833  
jwills@ljhmv.com.au

**AGENCY**  
LJ Hooker Mona Vale  
(02) 9979 8000

All information contained therein is gathered from relevant third parties sources.  
We cannot guarantee or give any warranty about the information provided.  
Interested parties must rely solely on their own enquiries.

LJ Hooker

extended family or income potential. A separate garden studio provides yet another inspiring space for creativity, work or relaxation.

Set on 794sqm with dual street access via Florence Terrace and Thompson Street, the property also offers off-street buggy/car parking and enjoys the privacy of reserve land next door.

Just 400 metres to two ferry wharves, the ten-minute ferry trip to Church Point connects you easily to the mainland while maintaining the unique charm of island life.

Surrounded by some of Sydney's most prestigious waterfront suburbs yet offering a wonderfully relaxed and vibrant community, this is a rare opportunity to secure a spacious Pittwater retreat in one of Sydney's most distinctive coastal enclaves.

**Disclaimer:**

All information contained herewith, including but not limited to the general property description, price and the address, is provided to LJ Hooker Mona Vale by third parties. We have obtained this information from sources we believe to be reliable; however, we cannot guarantee its accuracy. The information contained herewith should not be relied upon and you should make your own enquiries and seek advice in respect of this property or any property on this website.

**MORE DETAILS**

Property ID	2WPPF6K
Property Type	House
Land Area	790 m2

**Lachlan Elder 0418 224 180**

Principal, Licensed Real Estate Agent | [lelder@ljhmv.com.au](mailto:lelder@ljhmv.com.au)

**Juliet Wills 0438 418 833**

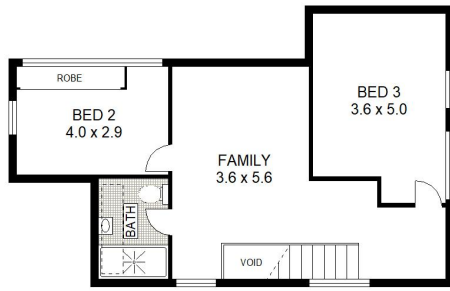
Licensed Real Estate Agent | [jwills@ljhmv.com.au](mailto:jwills@ljhmv.com.au)

**LJ Hooker Mona Vale (02) 9979 8000**

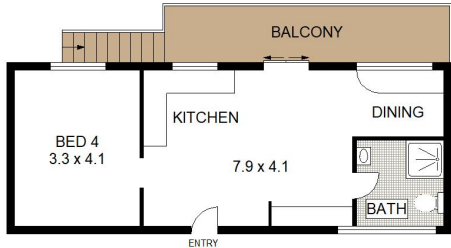
3/18 Bungan Street, MONA VALE NSW 2103

[monavale.ljhooker.com.au](http://monavale.ljhooker.com.au) | [monavale@ljhmv.com.au](mailto:monavale@ljhmv.com.au)

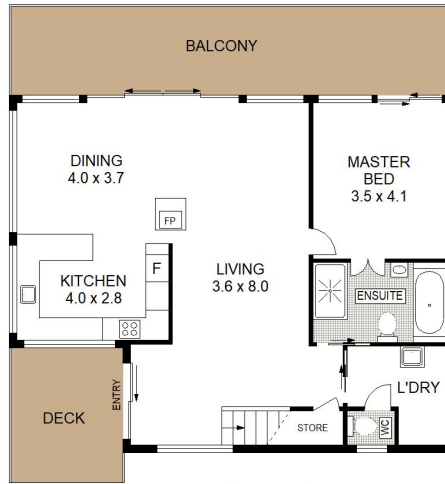




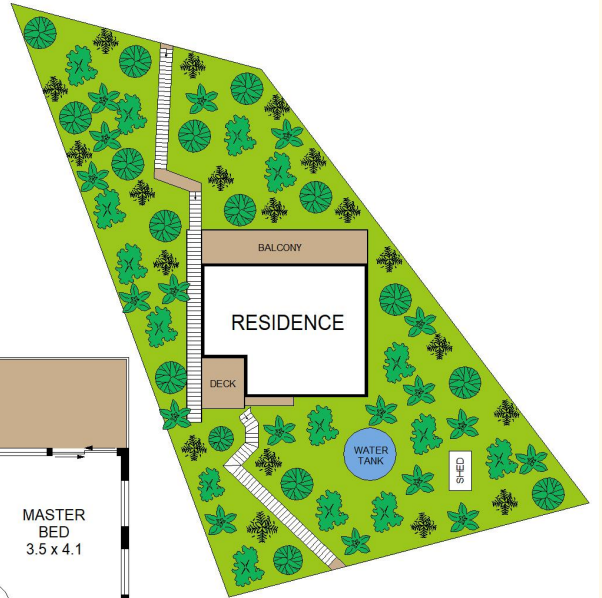
SECOND FLOOR



GROUND FLOOR



FIRST FLOOR



SITE PLAN (NOT TO SCALE)



Scale in metres. Indicative only. Dimensions are approximate. All information contained herein is gathered from sources we believe to be reliable. However we cannot guarantee its accuracy and interested persons should rely on their own enquiries.



15 Thompson Street , Scotland Island



All information contained therein is gathered from relevant third parties sources. We cannot guarantee or give any warranty about the information provided. Interested parties must rely solely on their own enquiries.

