



Scotland Island, 11 Florence Terrace

Prime Point Location - Perfect North Aspect

A rare opportunity to secure the best position on the Island that boasts a true deep waterfront, boatshed, private jetty and hard to find level land.

Featuring a beautifully maintained comfortable yet modest 2 bedroom log cabin, with a new kitchen & polished timber floors. All soaked in winter sun from it rising until it sets. One level living and a true holiday feeling.

The 3rd bedroom is on the water's edge within the boatshed.

The cottage is ideal the way it is, but it lends itself perfectly for development if more accommodation is required. Rest assured, in this prime position, overcapitalising is not an option.

An inspection is a must to truly appreciate how special this position is.



Disclaimer: All information contained therein is gathered from relevant third parties sources. We cannot guarantee or give any warranty about the information provided. Interested parties must rely solely on their own enquiries.



For Sale
North Facing Deep Waterfront

View
By Appointment

Contact
Lachlan Elder
0418 224 180
lelder@ljhmv.com.au

Juliet Wills
0438 418 833
jwills@ljhmv.com.au

LJ Hooker Mona Vale
(02) 9979 8000

Disclaimer:

All information contained herewith, including but not limited to the general property description, price and the address, is provided to LJ Hooker Mona Vale by third parties. We have obtained this information from sources we believe to be reliable; however, we cannot guarantee its accuracy. The information contained herewith should not be relied upon and you should make your own enquiries and seek advice in respect of this property or any property on this website.

More About this Property

Property ID	2QH0F6K
Property Type	House
Land Area	868 m ²

Lachlan Elder 0418 224 180

Principal, Licensed Real Estate Agent | lelder@ljhmv.com.au

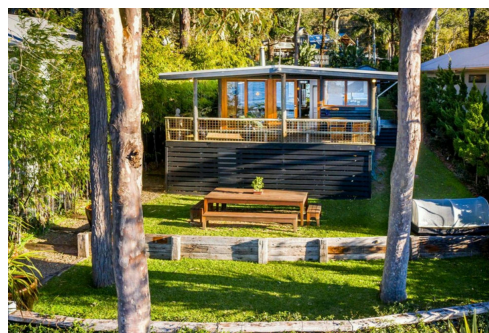
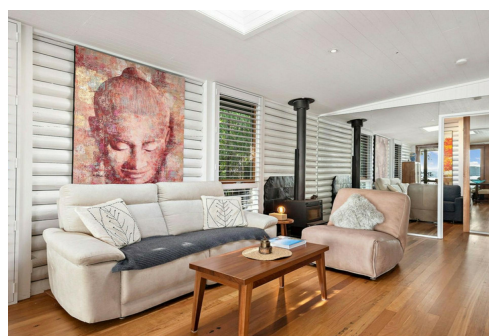
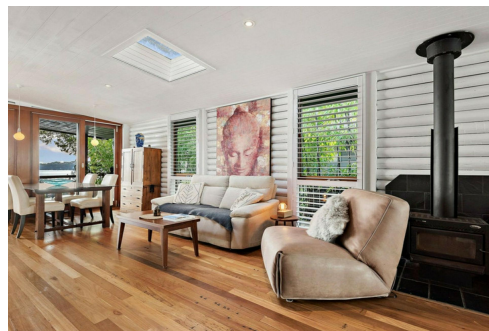
Juliet Wills 0438 418 833

Licensed Real Estate Agent | jwills@ljhmv.com.au

LJ Hooker Mona Vale (02) 9979 8000

3/18 Bungan Street, MONA VALE NSW 2103

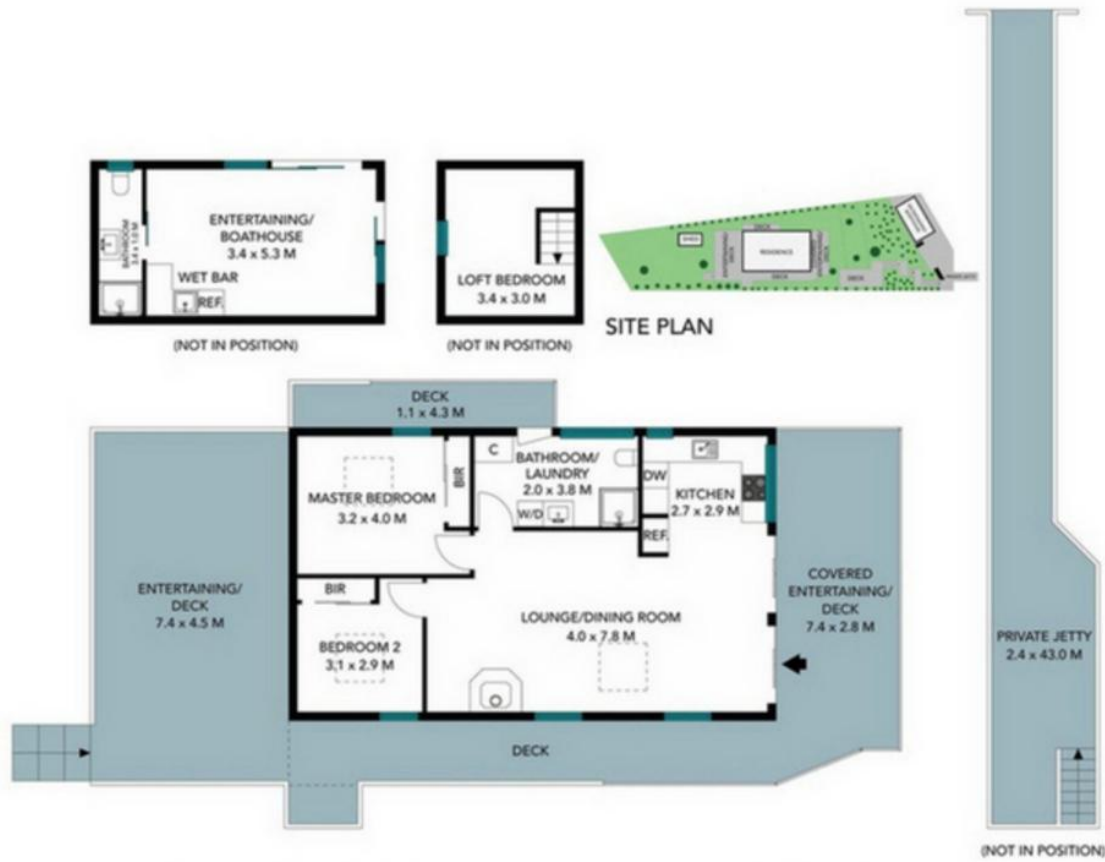
monavale.ljhooker.com.au | monavale@ljhmv.com.au



Disclaimer: All information contained therein is gathered from relevant third parties sources.

We cannot guarantee or give any warranty about the information provided. Interested parties must rely solely on their own enquiries.

**LJ Hooker Mona Vale
(02) 9979 8000**



The site plan and floor plan are not to scale, measurements are indicative and in metres. Bathes and trims are placed for illustration purposes. Plans should not be relied on. Interested parties should make and rely on their own enquiries. All other information provided has been collected from reliable sources but cannot be guaranteed for accuracy.

11 Florence Terrace, Scotland Island