

29 Princes Road, Schofields

## Private Entertainer's Retreat with Beautiful Outdoor Living

Braedy Milledge from LJ Hooker is proud to present this superb family residence designed for effortless living and exceptional entertaining. Showcasing generous interiors and a seamless connection to the outdoors, the home boasts a stunning covered alfresco area with a striking vaulted ceiling that overlooks a sparkling in-ground swimming pool framed by lush greenery. Perfect for hosting family gatherings or relaxed weekends with friends, this inviting outdoor retreat is complemented by spacious living zones, a well-appointed kitchen and a flexible layout designed to accommodate modern family life. Located in a family-friendly community close to everything you need including schools, shopping and transport options.

### Features Include:

- Large living room upon entry flowing into the separated formal dining
- Open plan family area offers excellent flexibility
- Spacious kitchen with island bench, quality appliances, plentiful cupboards
- Five generous bedrooms, four fitted with built-in wardrobes
- Two bathrooms, main with separate shower and deep corner bath
- Ducted air conditioning plus ceiling fans for year-round comfort

All information contained therein is gathered from relevant third parties sources. We cannot guarantee or give any warranty about the information provided. Interested parties must rely solely on their own enquiries.

5  2  2 

**FOR SALE**  
CONTACT AGENT

**VIEW**  
By Appointment

**AGENTS**  
Braedy Milledge  
0404 160 447  
braedy.milledge@ljhooker.com.au

Laurie Spiteri  
0466 572 777  
laurie.spiteri@ljhooker.com.au

**AGENCY**  
LJ Hooker Schofields | Riverstone  
02 9157 4077

 **LJ Hooker**

- Stunning covered alfresco area with vaulted ceiling, fan and picturesque outlook
- Sparkling in-ground swimming pool framed by lush foliage
- Low-maintenance lawns and gardens to the front and rear
- Large workshop and garden shed providing ample storage options

**Location Highlights:**

- 650m approx to bus stop
- 2.5km approx to Schofields Station
- 4.6km approx to Tallawong Metro
- 6.4km approx to Rouse Hill Town Centre
- 5.4km approx to IKEA, Costco, Bunnings and other major retailers

**Schools & Education:**

- 700m approx to Schofields Public School
- 2.3km approx to Riverstone High School
- 2.5km approx to Norwest Christian College
- 3.1km approx to St Joseph's Primary
- 3.8km approx to St John Paul II Catholic College
- 3.8km approx to Marsden Park Anglican College
- 4km approx to Future Tallawong High School (2027 enrolment)

Contact Braedy Milledge at 0404 160 447 today to arrange an inspection.

- \*\*\*

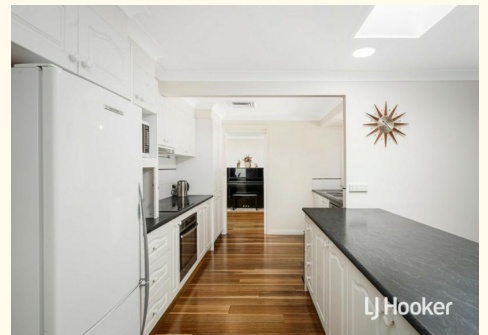
**DISCLAIMER:** This advertisement contains information provided by third parties. While all care is taken to ensure otherwise, LJ Hooker Schofields | Riverstone does not make any representation as to the accuracy of the information contained in the advertisement, does not accept any responsibility or liability, and recommends that any client make their own investigations and inquiries. All images are indicative of the property only and may include virtual furniture, styling, or digital enhancements for illustrative purposes.

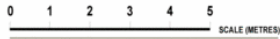
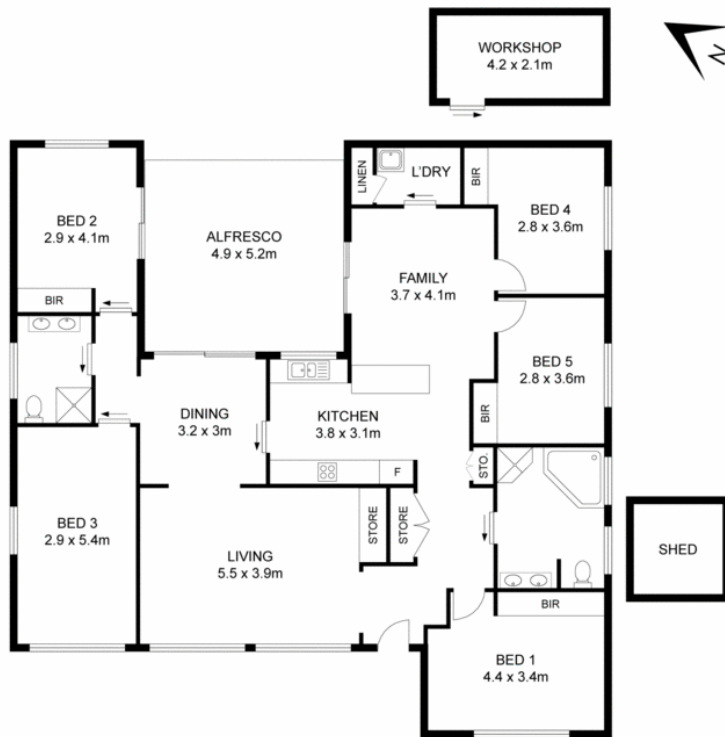
**MORE DETAILS**

Property ID	5C7HXY
Property Type	House
Land Area	572.5 m2
Including	Air Conditioning Toilets (2) Alarm Pool Dishwasher Built-in-Robes

**Braedy Milledge 0404 160 447**  
 Partner | braedy.milledge@ljhooker.com.au  
**Laurie Spiteri 0466 572 777**  
 Sales Associate | laurie.spiteri@ljhooker.com.au

**LJ Hooker Schofields | Riverstone 02 9157 4077**  
 Shop 35, 111 Railway Terrace, SCHOFIELDS NSW 2762  
 schofields.ljhooker.com.au | schofields@ljhooker.com.au





## 29 Princes Road, Schofields

Disclaimer: Floor plans and site plans are intended as a guide only. They are not part of any legal document or title and are subject to errors, omission, and inaccuracies and should not be used as reference. Sizes and dimensions are approximate only. Interested parties should make their own enquiries. Floor plan by: Sync Studios Pty Ltd

