




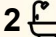
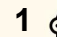
414/10B Rugby Street, Schofields

Sleek Design, Prime Location, Easy Living

Braedy Milledge from LJ Hooker Schofields proudly presents this stunning near-new apartment, offering the perfect blend of modern design, everyday comfort and unbeatable convenience. Thoughtfully designed with an open-plan layout, this beautiful home delivers effortless living in one of Schofields' most sought-after pockets. Whether you're a first-home buyer, downsizer or investor, this residence promises a low-maintenance lifestyle within a thriving and well-connected community. With secure building access and exceptional proximity to schools, transport and shopping, this apartment ticks every box for modern living.

Features:

- Open plan living and dining zones boast effortless flow to the balcony with dual access
- Beautiful kitchen boasts gas cooktop, breakfast bar, stone benchtops
- Two well appointed bedrooms both fitted with built-in wardrobes
- Master bedroom is complete with private ensuite
- Two sleek bathrooms enhanced with floor-to-ceiling tiles
- Covered balcony perfect for alfresco dining or relaxing enjoying district views

2  2  1 

FOR SALE

Just Listed

VIEW

Wed 10th Jun @ 6:45PM - 7:00PM

AGENTS

Braedy Milledge
0404 160 447
braedy.milledge@ljhooker.com.au

Jiya Sharma
0431 098 855
jiya.sharma@ljhooker.com.au

AGENCY

LJ Hooker Schofields | Riverstone
02 9157 4077

All information contained therein is gathered from relevant third parties sources. We cannot guarantee or give any warranty about the information provided. Interested parties must rely solely on their own enquiries.



- Ducted air conditioning for year-round comfort
- Easy-care flooring throughout, plentiful storage
- Secure complex featuring intercom, lift access and rooftop entertaining area
- Single car space plus storage

Location Highlights:

- 800m approx to Schofields Village Shopping
- 1.1km approx to Schofields Train Station
- 1.7km approx to Glory Park
- 5.2km approx to Tallawong Metro Station
- 7km approx to Rouse Hill Town Centre
- 7.2km approx to IKEA, Costco, Bunnings and other major retailers

Schools & Education:

- 2.1km approx to Hambledon Public School
- 2.2km approx to St Joseph's Primary School
- 2.8km approx to St John Paul II Catholic College
- 4.4km approx to Quakers Hill School
- 5.6km approx to Norwest Christian College

Contact Braedy Milledge at 0404 160 447 today to arrange an inspection!

- ***

DISCLAIMER: This advertisement contains information provided by third parties. While all care is taken to ensure otherwise, LJ Hooker Schofields | Riverstone does not make any representation as to the accuracy of the information contained in the advertisement, does not accept any responsibility or liability, and recommends that any client make their own investigations and inquiries. All images are indicative of the property only and may include virtual furniture, styling, or digital enhancements for illustrative purposes.

MORE DETAILS

Property ID	592HXY
Property Type	Apartment
Including	Ensuite Toilets (2) Balcony Built-in-Robes

Braedy Milledge 0404 160 447

Partner | braedy.milledge@ljhooker.com.au

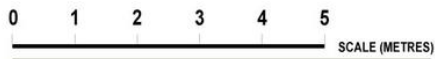
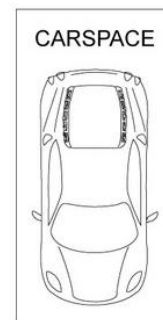
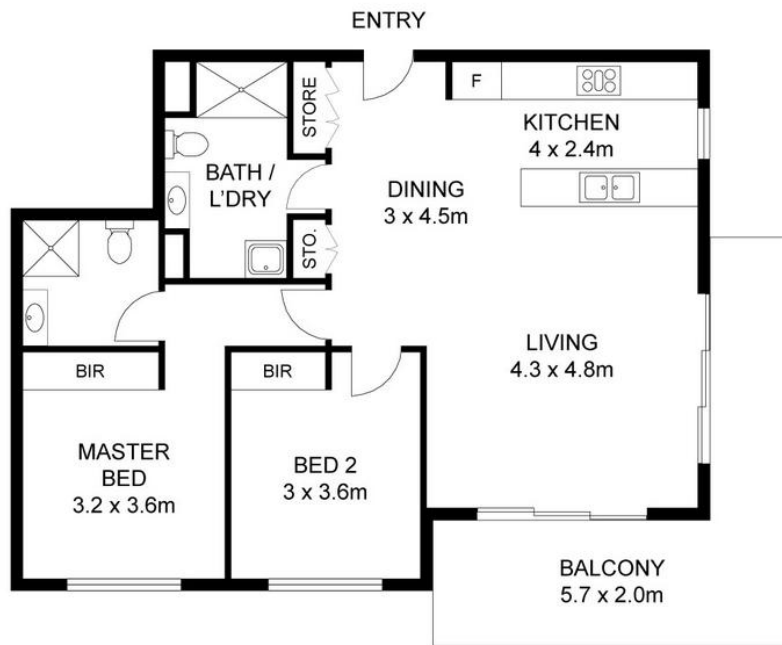
Jiya Sharma 0431 098 855

Sales Associate | jiya.sharma@ljhooker.com.au

LJ Hooker Schofields | Riverstone 02 9157 4077

Shop 35, 111 Railway Terrace, SCHOFIELDS NSW 2762
schofields.ljhooker.com.au | schofields@ljhooker.com.au





414/10B Rugby Street, Schofields

Disclaimer: Floor plans and site plans are intended as a guide only. They are not part of any legal document or title and are subject to errors, omission, and inaccuracies and should not be used as reference. Sizes and dimensions are approximate only. Interested parties should make their own enquiries. Floor plan by: Sync Studios Pty Ltd

