
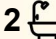
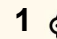




411/41B Manchester Drive, Schofields

2  2  1 

SOLD BY YOUR SCHOFIELDS & TALLAWONG SPECIALIST!! CALL BRAEDY MILLEDGE AT 0404 160 447 FOR A FREE MARKET APPRAISAL!

FOR SALE
SOLD BY BRAEDY MILLEDGE

AGENTS

Braedy Milledge
0404 160 447
braedy.milledge@ljhooker.com.au

AGENCY

LJ Hooker Schofields | Riverstone
02 9157 4077

Braedy Milledge from LJ Hooker Schofields are proud to present this stunning two-bedroom apartment in the heart of Schofields. Featuring a modern design, comfort and style, conveniently situated close to Schofields Train Station, Woolworths and Schofields village, the new residence offers a superior relaxed quality living complete with education, retail, nature and recreational features.

This home will impress you with its large open lounge area with lots of natural light coming through the entire apartment with a common area to relax and a BBQ area to host when friends and family are over.

Some of the many features of this home include:

- Good sized bedrooms, both with built-in wardrobes
- Study area that provides a quiet and focused space that enhances the functionality of the apartment.

All information contained therein is gathered from relevant third parties sources.
We cannot guarantee or give any warranty about the information provided.
Interested parties must rely solely on their own enquiries.

 **LJ Hooker**

- Automated ducted air-conditioning
- Open plan kitchen, dining and spacious lounge with lots of natural light
- Ample storage in kitchen and Fisher and Paykal appliances
- Bathrooms include floor to ceiling tiles and great sized shower
- Car space and storage downstairs
- Locked secure gates and cameras
- Still covered under builders' warranty
- Built by ALAND

Location Highlights

- 100m approx to Glory Park
- 900m approx to Schofields Station
- 900m approx to Schofields Shops
- 3.7km approx to Tallawong Metro
- 4.3km approx to Riverstone Station
- 4.9km approx to The Ponds Shopping Centre
- 5.4km approx to Rouse Hill Town Centre
- 5.6km approx to TAFE NSW - Nirimba
- 6.2km approx to Costco, IKEA, Aldi, Bunnings and more shops

Schools & Education:

- 1.2km approx to St Joseph's Primary School
- 2km approx to Galungara Public School
- 2.5km approx to St John Paul II Catholic College
- 4km approx to Riverstone High School
- 5.5km approx to Wyndham College

Situated neatly in the ever-growing suburb of Schofields. This home sits in a friendly community and is close to transport, shops and quality schools. Built to perfection, this great home is ready for its new family to move in and enjoy the comforts and features it has to offer. Call Braedy Milledge at 0404 160 447 to discuss this amazing opportunity!

- **

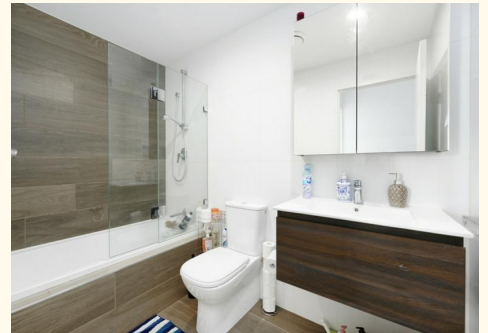
DISCLAIMER: This advertisement contains information provided by third parties. While all care is taken to ensure otherwise, LJ Hooker Schofields does not make any representation as to the accuracy of the information contained in the advertisement, does not accept any responsibility or liability, and recommends that any client make their own investigations and inquiries. All images are indicative of the property only.

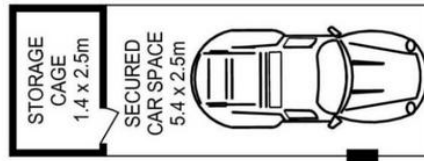
MORE DETAILS

Property ID 48THXY
Property Type Apartment
House Size 109 m2
Including Ensuite
Air Conditioning
Ducted Cooling
Ducted Heating
Toilets (2)
Intercom
Balcony
Dishwasher
Secure Parking
Liveability

Braedy Milledge 0404 160 447
Partner | braedy.milledge@ljhooker.com.au

LJ Hooker Schofields | Riverstone 02 9157 4077
Shop 35, 111 Railway Terrace, SCHOFIELDS NSW 2762
schofields.ljhooker.com.au | schofields@ljhooker.com.au





BASEMENT



LEVEL FOUR

APPROX. INT. AREA : 91 m²
APPROX. EXT. AREA : 28 m²
TOTAL AREA INCLUDING CAR SPACE AND STORAGE : 119 m²

411 / 41B Manchester Drive, Schofields

Disclaimer: Floor plans and site plans are intended as a guide only. They are not part of any legal document or title and are subject to errors, omission, and inaccuracies and should not be used as reference. Sizes and dimensions are approximate only. Interested parties should make their own enquiries.

