



15/3 Rock Street, Scarborough

Extensive Wraparound Balcony. Panoramic Views. Bayside Living


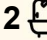
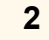
Rare but always in demand, this three-bedroom apartment delivers a lifestyle many seek - positioned at the northern tip of the Redcliffe Peninsula, mere metres from Scarborough's foreshore and café culture. Its defining feature is the enormous wraparound balcony, set on the eastern side and stretching north to south, more than doubling the internal living area. The orientation captures sweeping coastal views and cooling sea breezes, while seamlessly connecting to every room. With open-plan living, two bathrooms, and resort-style facilities, it blends comfort with the very best of bayside living.

Designed for easy living and relaxed entertaining, every space flows naturally to the outdoor balcony, making the most of natural light, bay breezes, and uninterrupted views.

The features include but are not limited to:

- Three generous bedrooms, filled with light, each lead directly to the outdoor
- Main-bedroom complete with a private ensuite, built-in robe, & built-in shelving

All information contained therein is gathered from relevant third parties sources. We cannot guarantee or give any warranty about the information provided. Interested parties must rely solely on their own enquiries.

3  2  2 

FOR SALE
Under Contract

VIEW
By Appointment

AGENTS
Scott Gemmell
0477 883 388
sgemmell@ljhpropertycentre.com.au

AGENCY
LJ Hooker Property Centre
(07) 3286 2500

 **LJ Hooker**

- Expansive wrap-around balcony is perfect for outdoor dining and entertaining
- " Living & dining offers a seamless indoor—outdoor connection with cross-breezes
- Well-designed kitchen with granite tops, electric cooktop, wall oven, & new tapware
- Two secure basement car spaces, with one currently converted to a lockable storage
- Level 1 pool & landscaped surrounds within a boutique complex of quality apartments
- Lift with fob-only access from the basement to all levels for peace of mind & security.

Scarborough is part of the Redcliffe Peninsula, a coastal destination celebrated for its vibrant foreshore, kilometres of beaches, and welcoming community atmosphere. A highlight is the network of interconnected bikeways starting at Scarborough, stretching south along the peninsula for more than 11 km of uninterrupted walking and cycling paths. For those drawn to the water, Scarborough Marina is close at hand, offering access to Moreton Bay and its surrounding islands.

Connect now to discuss available inspection times, or attend the advertised open home.

- *****

All information contained herein is gathered from sources we consider to be reliable. However, we cannot guarantee or give any warranty about the information provided. Interested parties must solely rely on their enquiries.

Note: This property is being sold by Expressions of Interest, and a nominated price has not been provided online. The website may have filtered the property into a price bracket for website functionality purposes only. However, assistance will be given regarding an anticipated value.

MORE DETAILS

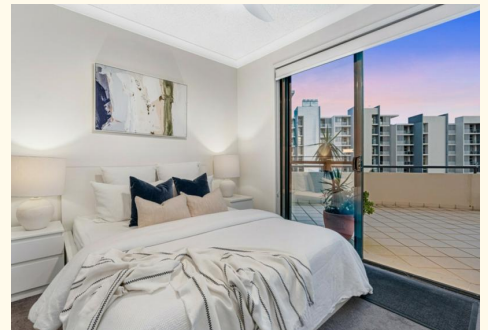
Property ID	BTH6F2S
Property Type	Apartment
Land Area	292 m2

Scott Gemmell 0477 883 388

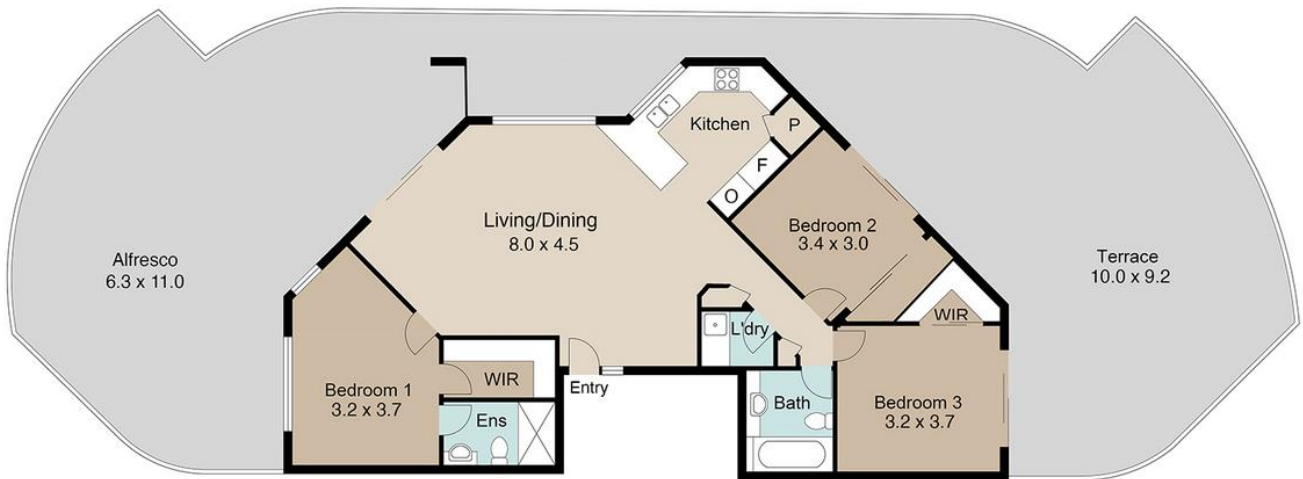
Independent Contractor - Gemmell Property Group Pty Ltd |
sgemmell@ljhpropertycentre.com.au

LJ Hooker Property Centre (07) 3286 2500

152-164 Shore St West, Raby Bay, Brisbane Qld 4163
propertycentre.ljhooker.com.au | hello@ljhpc.com.au



15/3 Rock Street



Floor plans are intended to give a general indication of the proposed layout only. All images and dimensions are not intended to form part any contract or warranty.