

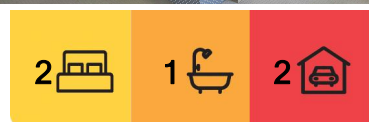
Sandy Bay, 4/287 Churchill Avenue

Sandy Bay - A Top Notch Townhouse

Ant's 'Fluff-Free' Description...

- * Winston himself would have loved this Churchill (Avenue) location!
- * Fully renovated and close to transport and the University, this would suit both the owner/occupier or investor alike
- * Spacious quality kitchen and dining area
- * Large separate living area with direct access to the fully fenced and private rear courtyard
- * Two bedrooms - both with built in robes
- * Neutral colours throughout
- * Undercover parking right at your doorstep
- * This really is a quality opportunity - so why not act NOW?!

Onwards and upwards to your top notch Sandy Bay townhouse!



For Sale
Offers Over \$545,000

View
ljhooker.com.au/5VNCFC5

Contact
Ant Manton
0408 621 856
antmanton@ljhookerpinnacle.com

Zac Flanagan
0466 685 937
zflanagan@ljhookerpinnacle.com



Disclaimer: All information contained therein is gathered from relevant third parties sources. We cannot guarantee or give any warranty about the information provided. Interested parties must rely solely on their own enquiries.

LJ Hooker Pinnacle Property
(03) 6272 8177

"I Work Harder - It's REALLY That Simple!"

Disclaimer: The information contained herein has been supplied to us and we have no reason to doubt its accuracy, however, cannot guarantee it. Accordingly, all interested parties should make their own enquiries to verify this information.

More About this Property

Property ID	5VNCFCS
Property Type	Unit
House Size	115 m ²
Land Area	122 m ²
Including	Air Conditioning Toilets (1) Courtyard Floorboards Built-in-Robes Fully Fenced

Ant Manton 0408 621 856

Real Estate Agent | antmanton@ljhookerpinnacle.com

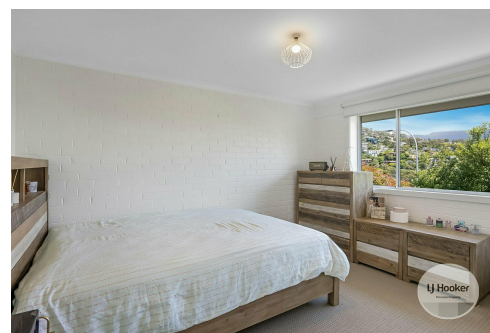
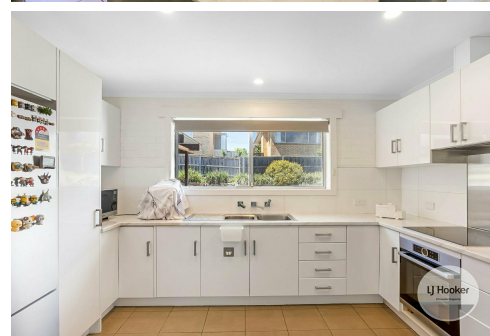
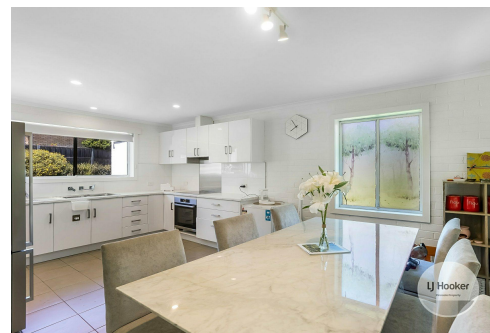
Zac Flanagan 0466 685 937

Operations Manager to Ant Manton | zflanagan@ljhookerpinnacle.com

LJ Hooker Pinnacle Property (03) 6272 8177

402 Main Road, GLENORCHY TAS 7010

pinnacleproperty.ljhooker.com.au | hello@ljhookerpinnacle.com

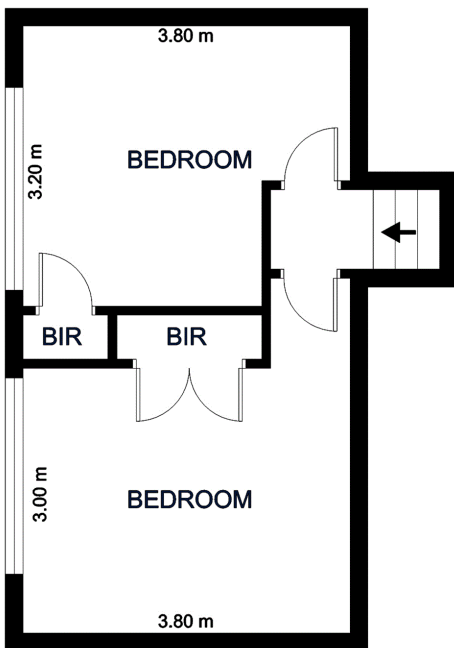


Disclaimer: All information contained therein is gathered from relevant third parties sources.

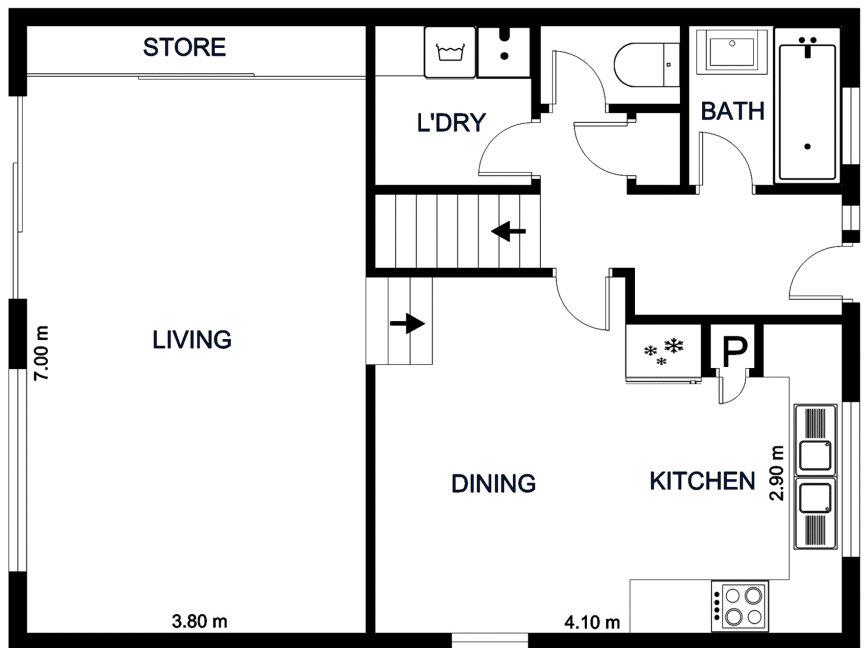
We cannot guarantee or give any warranty about the information provided. Interested parties must rely solely on their own enquiries.

LJ Hooker Pinnacle Property
(03) 6272 8177

FIRST FLOOR



GROUND LEVEL



4/287 Churchill Avenue, Sandy Bay

Total approx. floor area: 104m²

Areas and dimensions are approximate and therefore this floor plan should only be used for illustrative purposes.

Real Estate Marketing by nextcreative.com.au



LJ Hooker Pinnacle Property
(03) 6272 8177

Disclaimer: All information contained therein is gathered from relevant third parties sources. We cannot guarantee or give any warranty about the information provided. Interested parties must rely solely on their own enquiries.