

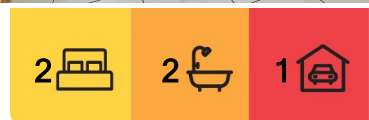
## Sandstone Point, 2/9-11 Spinnaker Drive

### ABSOLUTE WATERFRONT

Nestled in the Sandstone Point Marina and boasting 180 degree panoramic views of Pumicestone Passage, this spacious apartment is north facing and sheltered. On offer is a gorgeous, renovated 2 bedroom, 2 and half bathroom overlooking the Marina and surrounds. This is one of the best waterfront apartments I've seen in a long time. - with spectacular, unrivalled views that really do need to be seen to be appreciated. This is irreplaceable real estate that will surely attract long term capital growth and offer many, many years of pleasure for the discerning buyer.

WHY YOU WILL LOVE IT :::

- .Spacious 2 level living - huge open plan living and dining with generously high ceilings
- .2 spacious bedrooms.
- . King sized Primary bedroom has sensational water views and the Queens sized 2nd bedroom currently has views to Bribie island Bridge
- . Fully renovated Primary Ensuite with large walk in shower
- . Fully renovated bathroom features a "Roman bath" - perfect for adults and kids really to



**For Sale**  
Offers over \$859,000

**View**  
By Appointment

**Contact**  
**Monty Thompson**  
0414 526 266  
mthompson.bribieisland@ljhooker.com.au



**LJ Hooker Bribie Island**  
**(07) 3400 1900**

**Disclaimer:** All information contained therein is gathered from relevant third parties sources. We cannot guarantee or give any warranty about the information provided. Interested parties must rely solely on their own enquiries.



relax in.

- . Brand new ceiling fans, paint and carpet throughout and plantation shutters throughout upstairs
- . Modern Chef's kitchen with granite benchtops and breakfast bar that also enjoys those lovely water views.
- . Both levels are fully airconditioned
- . New awnings on the wrap around verandah. (potential for a 3rd bedroom downstairs).
- . Office nook with those same gorgeous water views - perfect for anyone working from home
- . Separate downstairs toilet and laundry
- . Lock up garage with mezzanine storage and additional parking at the rear of the property.
- . Video Security, 5Kw Solar Panels.
- . Pet friendly

The photos only give a brief glimpse of what is on offer here. An immediate inspection is strongly recommended to fully appreciate what a fantastic and unique proposition this is and why the word "Views" appears multiple times. There is no way around it, the views are breath-taking throughout the entire apartment. The secure apartment is perfectly position with restaurants, cafes and bars at your doorstep and very close to Bribie Island beaches, Sandstone point hotel, schools, shops, transport, clubs and all the amenities.

#### Advertising Disclaimer:

We have, in preparing this information used our best endeavours to ensure that the information contained herein is true and accurate, but accept no responsibility and disclaim all liability in respect of any errors, omissions, inaccuracies or misstatements that may occur. Prospective purchasers should make their own enquiries to verify the information contained herein.

## More About this Property

Property ID	WTNHCP
Property Type	Unit
House Size	156 m2

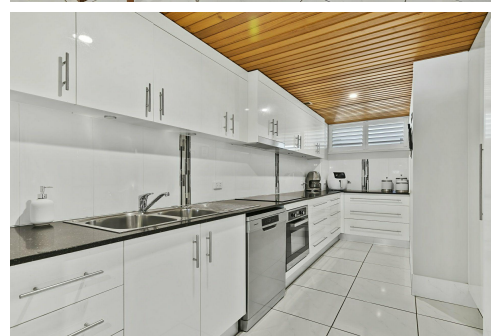
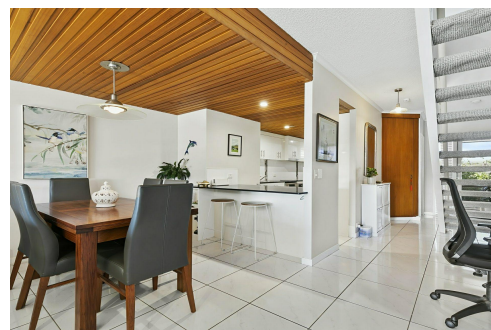
#### Monty Thompson 0414 526 266

Real Estate Agent | [mthompson.bribieisland@ljhooker.com.au](mailto:mthompson.bribieisland@ljhooker.com.au)

#### LJ Hooker Bribie Island (07) 3400 1900

16/19 Benabrow Avenue, BELLARA QLD 4507

[bribieisland@ljhooker.com.au](mailto:bribieisland@ljhooker.com.au) | [sales.bribieisland@ljhooker.com.au](mailto:sales.bribieisland@ljhooker.com.au)



**Disclaimer:** All information contained therein is gathered from relevant third parties sources. We cannot guarantee or give any warranty about the information provided. Interested parties must rely solely on their own enquiries.

**LJ Hooker Bribie Island**  
**(07) 3400 1900**



	
	2
	2
	1
<b>TOTAL:</b>	<b>156m<sup>2</sup></b>

## 2/9-11 Spinnaker Drive, **SANDSTONE POINT**

ARTIST'S IMPRESSION ONLY: While every attempt has been made to ensure the accuracy of this floor plan's areas and measurements of doors, windows, rooms and all other items are approximate and no responsibility is taken for any error, omission, or mis-statement. This plan is for illustrative purposes only and should only be used as such by any prospective purchaser.  
Floor plan by: [www.open2view.com.au](http://www.open2view.com.au)

