



Sandstone Point, 8A/16 Spinnaker Drive

Renovated Water View Townhouse

Located in Spinnaker Stage A. Immaculately renovated 3 bedroom, 2 bathroom townhouse which enjoys tranquil water views across to the Bribie Island Bridge and Pumicestone Passage Waterway across other lower units in the complex. This one is larger and wider than most others on offer in the complex and enjoys a position in the complex which is located on the foreshore, and is an end unit so great seabreezes, light, and only one direct neighbour.. There is a pool also in the complex, and this one has the added benefit of not only a lock up garage and its own visitor parking but also access to external parking street side. Short walk from the rear courtyard to the marina, shops, restaurants and cafes. Make the lifestyle move now!!



For Sale

Please Call

View

ljhooker.com.au/UVNHCP

Contact

John Farren-Price

0418 887 891

jfarrenprice@ljhooker.com.au

Connor Raven

0499 027 046

craven.bribieisland@ljhooker.com.au



Disclaimer: All information contained therein is gathered from relevant third parties sources. We cannot guarantee or give any warranty about the information provided. Interested parties must rely solely on their own enquiries.

LJ Hooker Bribie Island
(07) 3400 1900

More About this Property

Property ID	UVNHCP
Property Type	Townhouse
Including	Air Conditioning Toilets (2) Pool Courtyard Balcony Dishwasher Outdoor Entertaining Built-in-Robes Secure Parking

John Farren-Price

Licensed Real Estate Agent | jfarrenprice@ljhooker.com.au

Connor Raven

Residential Sales | craven.bribieisland@ljhooker.com.au

LJ Hooker Bribie Island (07) 3400 1900

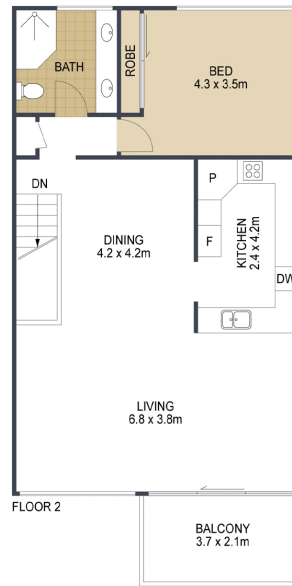
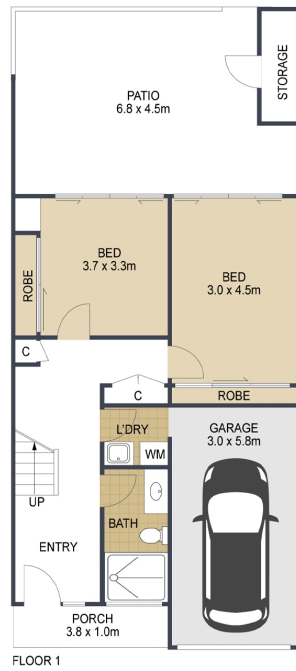
16/19 Benabrow Avenue, BELLARA QLD 4507

bribieisland.ljhooker.com.au | enquiries.bribieisland@ljhooker.com.au



LJ Hooker Bribie Island
(07) 3400 1900

Disclaimer: All information contained therein is gathered from relevant third parties sources. We cannot guarantee or give any warranty about the information provided. Interested parties must rely solely on their own enquiries.



 3

 2

 1

TOTAL: 153m²

8a /16 Spinnaker Drive, **SANDSTONE POINT**

ARTIST'S IMPRESSION ONLY: While every attempt has been made to ensure the accuracy of this floor plan's areas and measurements of doors, windows, rooms and all other items are approximate and no responsibility is taken for any error, omission, or mis-statement. This plan is for illustrative purposes only and should only be used as such by any prospective purchaser.
Floor plan by: www.open2view.com.au

