



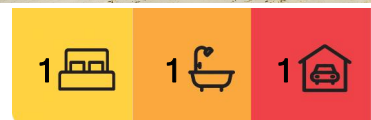
Sandstone Point, 104/1 Kal ma Kuta Drive

Charming Dwelling at Silver Shores, Sandstone Point

Embrace a serene lifestyle in this delightful moveable dwelling located in the coveted village at Silver Shores, Sandstone Point. Nestled in a friendly, well-maintained community, this home offers comfort, convenience, and a sense of belonging.

Features Include:

- 1 Bed
- 1 Bath
- 1 Carport
- A/C
- Garden Shed
- Kitchen
- Dining space
- Small Patio Space



For Sale
Please Call

View
ljhooker.com.au/WBGHCP

Contact
Connor Raven
0499 027 046
craven.bribieisland@ljhooker.com.au

Troy Kelly
0466 976 946
tkelly.bribieisland@ljhooker.com.au



Disclaimer: All information contained therein is gathered from relevant third parties sources. We cannot guarantee or give any warranty about the information provided. Interested parties must rely solely on their own enquiries.

LJ Hooker Bribie Island
(07) 3400 1900

Enjoy your morning coffee or afternoon tea on the private, covered patio, surrounded by beautifully landscaped gardens. The moveable dwelling also includes a carport, ensuring your vehicle is safe and secure.

Silver Shores offers a vibrant and engaging lifestyle. Located close to local shops, medical facilities, and the picturesque Bribie Island, everything you need is within easy reach.

Don't miss this opportunity to join a welcoming community and enjoy a relaxed, carefree lifestyle at Silver Shores. Contact us today to arrange a viewing!

More About this Property

| | |
|---------------|--------|
| Property ID | WBGHCP |
| Property Type | House |

Connor Raven 0499 027 046

Residential Sales | craven.bribieisland@ljhooker.com.au

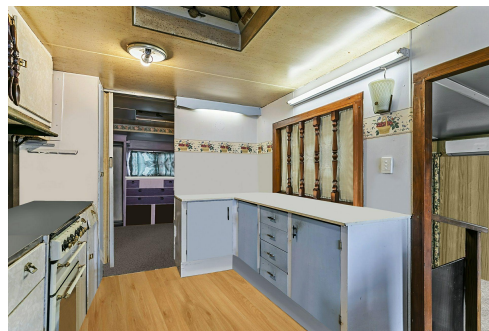
Troy Kelly 0466 976 946

Sales Associate | tkelly.bribieisland@ljhooker.com.au

LJ Hooker Bribie Island (07) 3400 1900

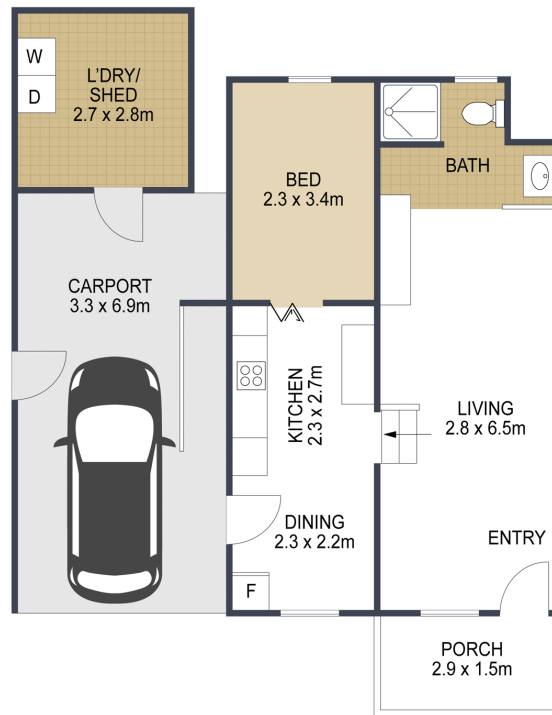
16/19 Benabrow Avenue, BELLARA QLD 4507

bribieisland.ljhooker.com.au | enquiries.bribieisland@ljhooker.com.au



Disclaimer: All information contained therein is gathered from relevant third parties sources. We cannot guarantee or give any warranty about the information provided. Interested parties must rely solely on their own enquiries.

**LJ Hooker Bribie Island
(07) 3400 1900**



| | |
|---|------------------|
|  | |
|  | 1 |
|  | 1 |
|  | 1 |
| TOTAL: | 82m ² |

104/1 Kal Ma Kuta Drive, **SANDSTONE POINT**

ARTIST'S IMPRESSION ONLY: While every attempt has been made to ensure the accuracy of this floor plan's areas and measurements of doors, windows, rooms and all other items are approximate and no responsibility is taken for any error, omission, or mis-statement. This plan is for illustrative purposes only and should only be used as such by any prospective purchaser.
Floor plan by: www.open2view.com.au

