



Sandstone Point, 1 Mackerel Street

In need of some TLC

Sitting on an elevated 610m2 corner block, in a prime location of Sandstone Point, this 3-bedroom, 2-bathroom home with a double garage, needs a little tender loving care, but is priced to sell. Walking distance to the local shopping centre, parks, off leash dog areas, the waterfront and the iconic Sandstone Point Hotel. With loads of room for a caravan, boat or a kids playground, this property would be a great first home, downsizer or investment. House prices in Sandstone Point are rising daily, so be quick and call Gary Houghton from LJ Hooker today, as this one wont last long.

Property features:

- Elevated 610m2 corner block.
- 3 bedrooms.
- 2 bathrooms.
- Double garage.
- Room for the toys.
- Close to local shops, parks, waterfront and the iconic Sandstone Point Hotel.



Disclaimer: All information contained therein is gathered from relevant third parties sources. We cannot guarantee or give any warranty about the information provided. Interested parties must rely solely on their own enquiries.



For Sale
Please Call

View
ljhooker.com.au/WTQHCP

Contact
Gary Houghton
0402 669 029
ghoughton.bribieisland@ljhooker.com.au

LJ Hooker Bribie Island
(07) 3400 1900

- Vacant and priced to sell.

More About this Property

Property ID	WTQHCP
Property Type	House
Land Area	610 m2
Including	Ensuite Air Conditioning Toilets (2) Deck Built-in-Robes Secure Parking Fully Fenced

Gary Houghton 0402 669 029

Residential Sales | ghoughton.bribieisland@ljhooker.com.au

LJ Hooker Bribie Island (07) 3400 1900

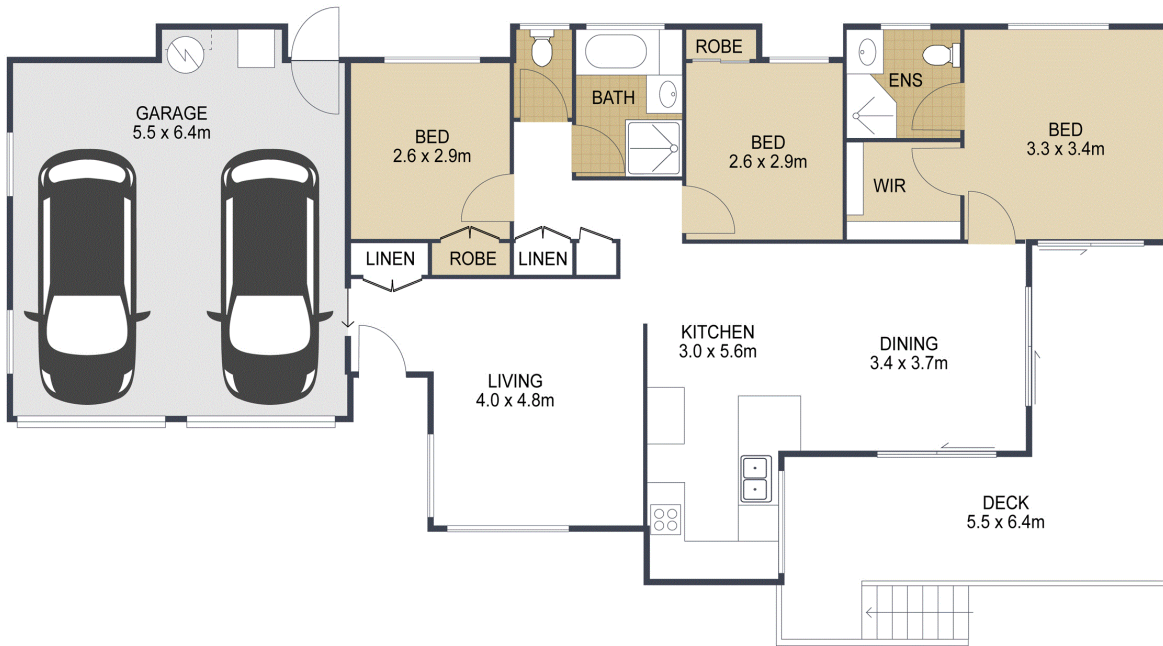
16/19 Benabrow Avenue, BELLARA QLD 4507

bribieisland.ljhooker.com.au | sales.bribieisland@ljhooker.com.au



**LJ Hooker Bribie Island
(07) 3400 1900**

Disclaimer: All information contained therein is gathered from relevant third parties sources. We cannot guarantee or give any warranty about the information provided. Interested parties must rely solely on their own enquiries.



TOTAL: 150m²

1 Mackerel Street SANDSTONE POINT

ARTIST'S IMPRESSION ONLY: While every attempt has been made to ensure the accuracy of this floor plan's areas and measurements of doors, windows, rooms and all other items are approximate and no responsibility is taken for any error, omission, or mis-statement. This plan is for illustrative purposes only and should only be used as such by any prospective purchaser.
 Floor plan by: www.open2view.com.au

