






583 Rifle Range Road, Sandford

Sandford...Clark Kent on the Outside - Superman on the Inside

Ant's "Fluff-Free" Description...

Tucked away on just over five acres, this Sandford retreat is the ultimate surprise package. Unassuming from the road, but once inside, the scale, light and outlook hit you square in the chest.

- Spacious open-plan living areas take full advantage of the sun and the stunning water views, while the modern kitchen delivers serious storage and quality appliances for those who love to cook - or at least look like they do.
- Four generous bedrooms are on offer, including a master suite with ensuite and walk-in robe, plus a dedicated study and an additional gym or games room. It really is like the Tardis... it just keeps going.
- Step outside to the huge entertaining deck, the perfect place for an after-work beverage while watching the local wildlife wander past.

4  2  6 

FOR SALE

Offers Over \$895,000

AGENTS

Ant Manton

0408 621 856

antmanton@ljhookerpinnacle.com

Zac Flanagan

0466 685 937

zflanagan@ljhpinnacle.com.au

AGENCY

LJ Hooker Pinnacle Property

(03) 6272 8177

All information contained therein is gathered from relevant third parties sources.
We cannot guarantee or give any warranty about the information provided.
Interested parties must rely solely on their own enquiries.

 **LJ Hooker**

You're only around 300 metres from the beach, with walking access to the Tangara Trail - whether that's a stroll, a run, or something a little more daring is entirely up to you.

The Important Stuff...

- Just under 5 acres of private land
- Stunning water views
- Spacious open-plan living filled with natural light
- Modern kitchen with quality appliances and loads of storage
- Four generous bedrooms
- Master bedroom with ensuite and walk-in robe
- Study plus gym or games room
- Double garage with internal access
- Off-street parking for multiple vehicles
- Huge outdoor entertaining deck
- Approx. 300 metres to the beach
- Walking access to the Tangara Trail
- Abundant wildlife and natural surrounds
- Secluded setting with easy Hobart commute

Private, peaceful and packed with surprises, this is a secluded lifestyle retreat that still sits within an easy commute of schools, shops and everyday essentials.

This one's special.

Onwards and upwards to your very own slice of Sandford!

"I Work Harder - It's THAT Simple!"

Disclaimer: The information contained herein has been supplied to us and we have no reason to doubt its accuracy, however, cannot guarantee it. Accordingly, all interested parties should make their own enquiries to verify this information.

MORE DETAILS

Property ID HUJ1F
Property Type House
House Size 191 m2
Land Area 20500 m2
Including Ensuite
Study
Air Conditioning
Toilets (2)
Fire Place
Balcony
Deck
Gym
Dishwasher
Built-in-Robes
Secure Parking
Remote Garage
Grey Water System
Water Tank

Ant Manton 0408 621 856

Real Estate Agent | antmanton@ljhookerpinnacle.com

Zac Flanagan 0466 685 937

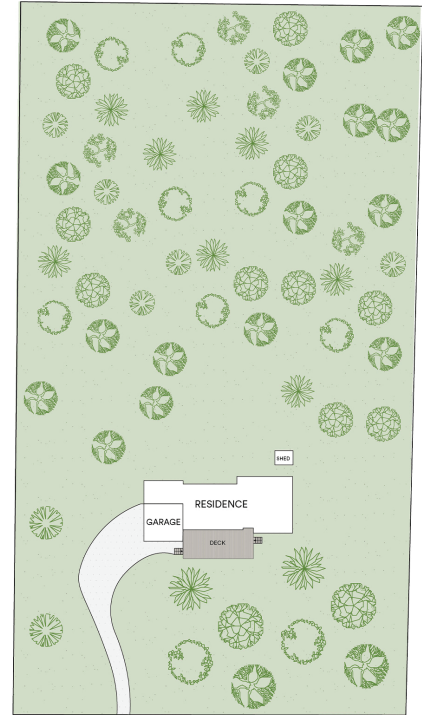
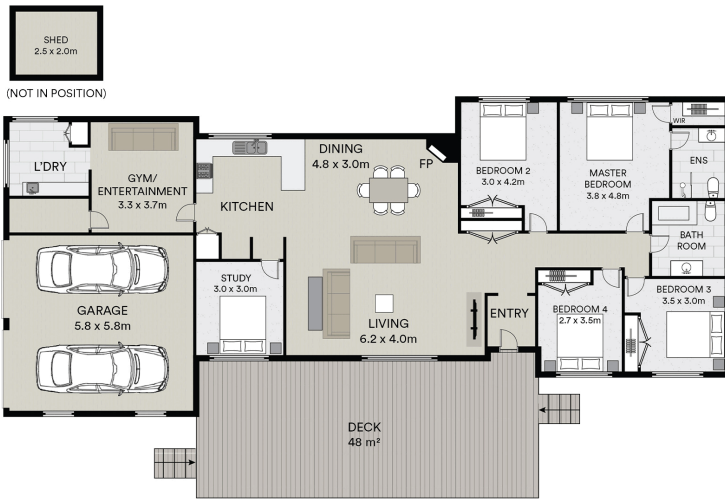
Operations Manager to Ant Manton | zflanagan@ljhpinnacle.com.au

LJ Hooker Pinnacle Property (03) 6272 8177

402 Main Road, GLENORCHY TAS 7010

pinnacleproperty.ljhooker.com.au | hello@ljhpinnacle.com.au





583 Rifle Range Road, Sandford

House area: 191 sqm

Areas and dimensions are approximate and therefore this floor plan should only be used for illustrative purposes.

Real Estate Marketing by nextcreative.com.au

