
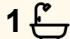
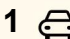


9/214 Kerry Street, Sanctuary Point

Easy-Care Over 55's Coastal Unit

This bright and breezy two-bedroom strata-titled unit sits at the front of a well-maintained complex and offers comfortable, low-maintenance living. The undercover front verandah is the perfect spot to enjoy a morning coffee or unwind in the afternoon sun. Inside, both bedrooms are carpeted and feature built-in robes and ceiling fans. The good-sized bathroom includes a separate toilet for added convenience. A central kitchen with electric appliances and a breakfast bench enjoys a pleasant outlook and flows into the open plan living and dining area, complete with ceiling fan and air conditioning for year-round comfort. The internal laundry provides access to the single car garage, and a rear courtyard offers a private outdoor space to relax. Contact James Lewis on 0414 715 668 to arrange an inspection.

2  1  1 

FOR SALE
\$450,000 - \$475,000

AGENTS

James Lewis
0414 715 668
james.lewis@ljhooker.com.au

Kate Tucciarone
0494 187 031
kate.tucciarone@ljhooker.com.au

AGENCY

LJ Hooker Sanctuary Point | Vincentia
(02) 4442 1900

All information contained therein is gathered from relevant third parties sources.
We cannot guarantee or give any warranty about the information provided.
Interested parties must rely solely on their own enquiries.



MORE DETAILS

Property ID TF7FAT
Property Type House
Land Area 147 m2
Including Toilets (1)

James Lewis 0414 715 668

Principal | Auctioneer | james.lewis@ljhooker.com.au

Kate Tucciarone 0494 187 031

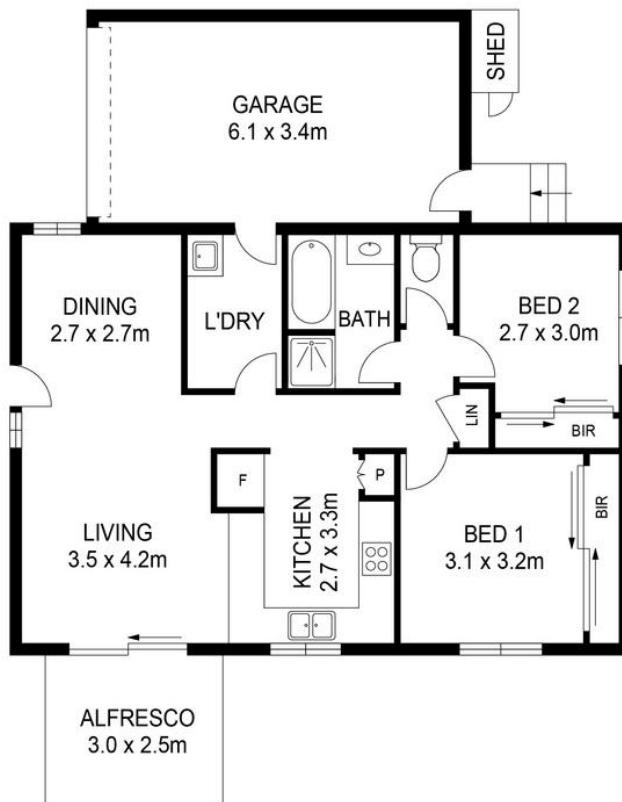
Licensed Real Estate Agent | kate.tucciarone@ljhooker.com.au

LJ Hooker Sanctuary Point | Vincentia (02) 4442 1900

1/10 Paradise Beach, Rd, SANCTUARY POINT NSW 2540
sanctuarypoint.ljhooker.com.au | sales.spv@ljhooker.com.au



All information contained therein is gathered from relevant third parties sources.
We cannot guarantee or give any warranty about the information provided.
Interested parties must rely solely on their own enquiries.



9/214 KERRY STREET, SANCTUARY POINT

RESIDENCE AREA : 102m² (APPROX INTERNAL AREA + GARAGE + ALFRESCO + SHED)

DIMENSIONS ARE APPROXIMATES ONLY & ALL INFORMATION GATHERED WE BELIEVE TO BE FROM RELIABLE SOURCES HOWEVER IT CAN NOT BE GUARANTEED & INTERESTED PARTIES SHOULD MAKE THEIR OWN ENQUIRIES.



Cue.
CREATIVE

