



6 Ethel Street, Sanctuary Point

Spacious Home in Excellent Location

Proudly presented by James Lewis and Kate Tucciarone of LJ Hooker Sanctuary Point | Vincentia.

Ideally positioned within easy walking distance to Paradise Beach Reserve, the Bay & Basin walking track, local shops and schools, this spacious double storey home offers a flexible floorplan and relaxed coastal lifestyle perfect for families or those seeking extra room to move.

The lower level is designed for comfortable everyday living, featuring an oversized open plan kitchen, living and dining area. Complete with split system air conditioning and a cosy wood burning heater, this space is ideal for both year-round comfort and entertaining. A full bathroom on this level adds further convenience.

Upstairs, a second generous living area provides a great retreat or additional family space, with access to both front and rear balconies to capture the breeze and natural light. The home comprises four well-proportioned bedrooms, two with built-in robes, while three enjoy direct access to a balcony. A centrally located bathroom services the upper level.

4  2  2 

FOR SALE
\$790,000

VIEW
Sat 9th May @ 10:15AM - 10:45AM

AGENTS

James Lewis
0414 715 668
james.lewis@ljhooker.com.au

Kate Tucciarone
0494 187 031
kate.tucciarone@ljhooker.com.au

AGENCY

LJ Hooker Sanctuary Point | Vincentia
(02) 4442 1900

All information contained therein is gathered from relevant third parties sources.
We cannot guarantee or give any warranty about the information provided.
Interested parties must rely solely on their own enquiries.

 **LJ Hooker**

Vehicle accommodation is well catered for with a single drive-through garage, plus an additional tandem lock-up garage with workshop space-perfect for storage, hobbies, or projects.

Set on a large, level block, the secure rear yard offers plenty of space for children and pets, along with established vegetable patches and mature fruit trees for those who enjoy a touch of self-sustainability.

Offering space, versatility and a highly convenient location, this is an excellent opportunity to secure a well-appointed family home in a sought-after coastal setting.

For further information or to arrange an inspection, contact James Lewis on 0414715668 or Kate Tucciarone on 0494187031.

MORE DETAILS

Property ID	TTAFAT
Property Type	House
Land Area	807 m2

James Lewis 0414 715 668

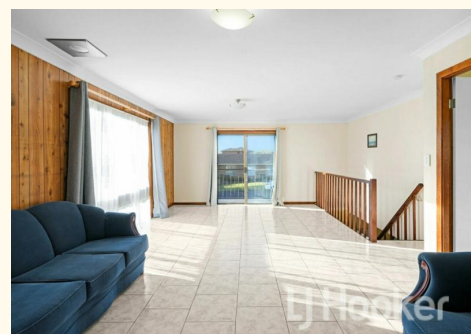
Principal | Auctioneer | james.lewis@ljhooker.com.au

Kate Tucciarone 0494 187 031

Licensed Real Estate Agent | kate.tucciarone@ljhooker.com.au

LJ Hooker Sanctuary Point | Vincentia (02) 4442 1900

1/10 Paradise Beach, Rd, SANCTUARY POINT NSW 2540
sanctuarypoint.ljhooker.com.au | sales.spv@ljhooker.com.au





6 ETHEL STREET, SANCTUARY POINT

RESIDENCE AREA : 342m² (APPROX INTERNAL AREA + GARAGE + PATIO + VERANDAH + SHED)

DIMENSIONS ARE APPROXIMATES ONLY & ALL INFORMATION GATHERED WE BELIEVE TO BE FROM RELIABLE SOURCES HOWEVER IT CAN NOT BE GUARANTEED & INTERESTED PARTIES SHOULD MAKE THEIR OWN ENQUIRIES.

