



SOLD



Salisbury, 1/10 Wright Street

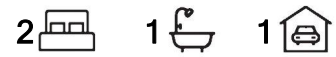
Fixer Upper that is Ideal for First Home or Investment!

An ideal opportunity to secure a great property that has instant access to capital growth with a little elbow grease. The home is in need of work but creates the ideal canvas to make the modifications that would suit your goals. When completed, the home offers a low maintenance investment property that will generate a great rental yield or alternatively a perfect starting home to get into the market.

Features to love:

- * Bedrooms 1 and 2 with separate split systems for heating and cooling
- * Fresh paint throughout
- * Private outdoor area
- * Large windows for natural light to enter
- * Ground floor unit with easy access

Conveniently located near schools, parks, shopping, and major transportation routes. Don't



For Sale
\$330,000 - \$350,000

View
ljhooker.com.au/2BH8GJU

Contact
Ashley Palazzo
0414 347 884
ashleyp@ljhsales.com.au



**LJ Hooker Greenwith | Golden Grove
| Mawson Lakes | Modbury
(08) 8289 6660**

Disclaimer: All information contained therein is gathered from relevant third parties sources. We cannot guarantee or give any warranty about the information provided. Interested parties must rely solely on their own enquiries.

miss this opportunity to invest in a property that promises great value with a little work!

All information provided has been obtained from sources we believe to be accurate, however, we cannot guarantee the information is accurate and we accept no liability for any errors or omissions (including but not limited to a property's land size, floor plans and size, building age and condition). Interested parties should make their own enquiries and obtain their own legal and financial advice. Should this property be scheduled for auction, the Vendor's Statement may be inspected at either of our two LJ Hooker Property Specialists Real Estate offices for 3 consecutive business days immediately preceding the auction and at the auction for 30 minutes before it starts.

RLA 208516

More About this Property

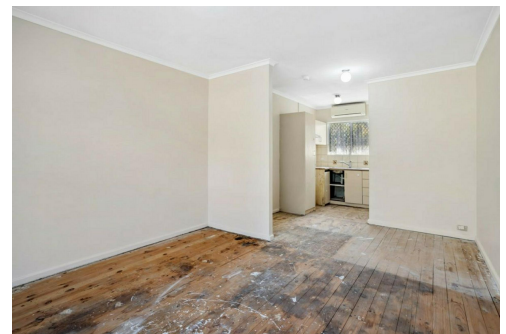
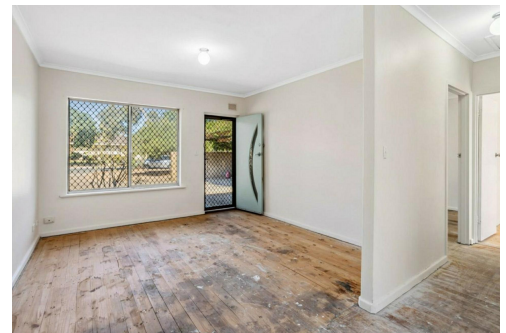
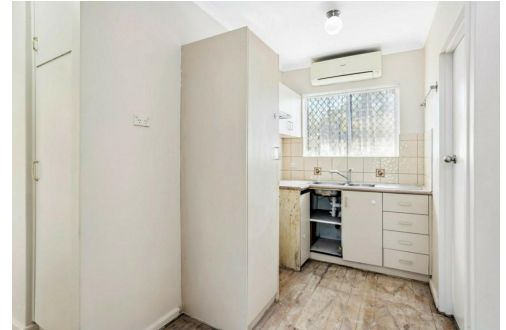
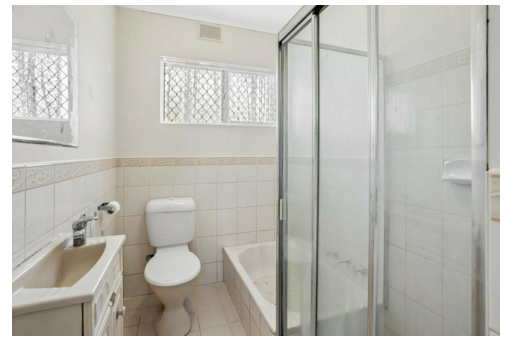
Property ID	2BH8GJU
Property Type	House
House Size	62 m2

Ashley Palazzo 0414 347 884

Sales Specialist | ashleyp@ljhsales.com.au

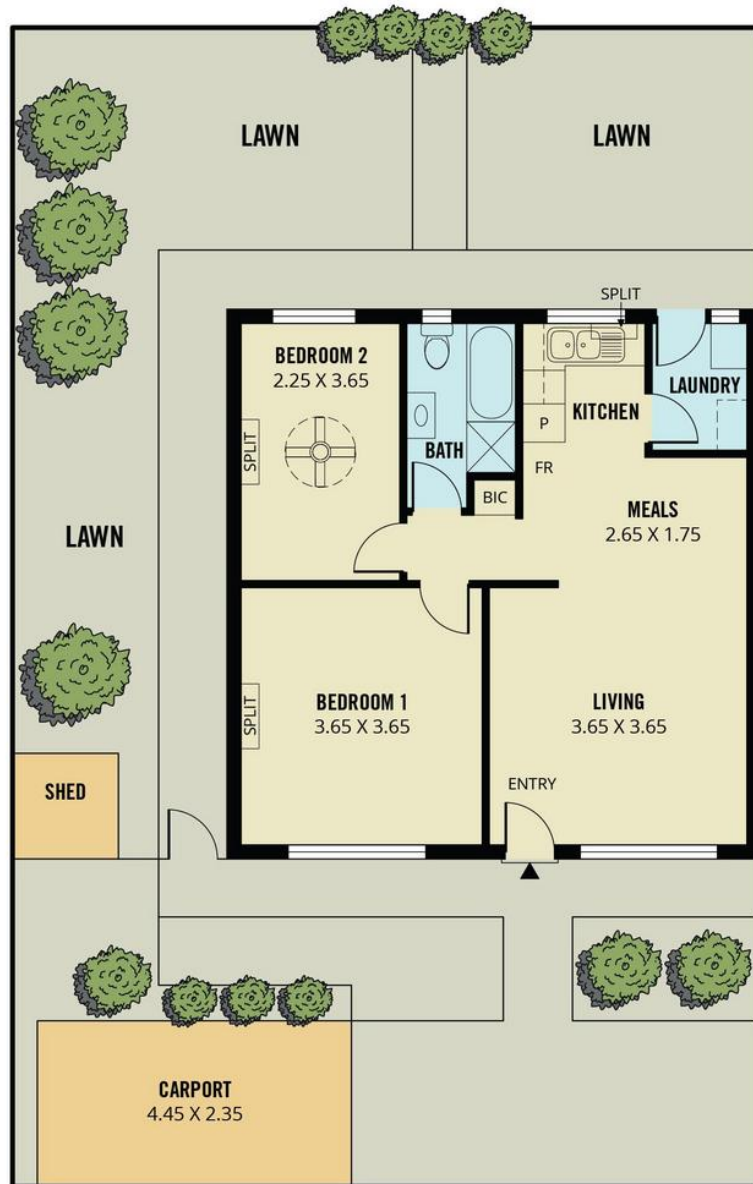
LJ Hooker Greenwith | Golden Grove | Mawson Lakes | Modbury (08) 8289 6660

North East, Shop 2, 1007 North East Road, RIDGEHAVEN SA 5097
greenwithgoldengrove.ljhooker.com.au | info@ljhsupport.com.au



Disclaimer: All information contained therein is gathered from relevant third parties sources. We cannot guarantee or give any warranty about the information provided. Interested parties must rely solely on their own enquiries.

**LJ Hooker Greenwith | Golden Grove
| Mawson Lakes | Modbury
(08) 8289 6660**



SITE PLAN
(NOT TO SCALE)

Scale in metres. This drawing is for illustration purposes only. All measurements are approximate and details intended to be relied upon should be independently verified. Produced by **The Fotobase Group**