

Salisbury, 83 Winsome Road

Deluxe Dual-Living Masterpiece in Salisbury

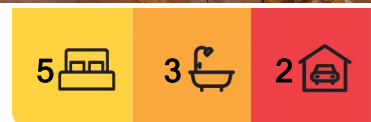
A flawless fusion of contemporary sophistication and upmarket luxury, this stunning five-bedroom double-storey residence in Salisbury delivers a lifestyle of effortless indulgence. Designed for dual-living convenience, it showcases a sprawling layout, complemented by three expansive living zones for relaxation and entertainment. With a stylish kitchen downstairs, an exquisite chef's kitchen upstairs, and a magnificent master retreat, this is a home that defines deluxe living.

Highlights:

- Lavish five-bedroom, dual-living residence featuring soaring 2.7 m ceilings upstairs and 2.6 m ceilings downstairs.
- Three spacious living areas: one on the lower level and two upstairs, offering ample room for entertainment and relaxation.
- Sleek downstairs kitchen with stone benches, plumbed-in fridge and dishwasher, plus a



Disclaimer: All information contained therein is gathered from relevant third parties sources. We cannot guarantee or give any warranty about the information provided. Interested parties must rely solely on their own enquiries.



For Sale
Please Call

View
ljhooker.com.au/B2VBF4R

Contact
Brendan Dingle
0401 500 412
brendandingle@ljhpp.com.au
Ruby Crowther
0422 189 718
rubicrowther@ljhpp.com.au

LJ Hooker Property Partners
07 3344 0288

high-end chef's kitchen upstairs with a gas stove, stone counters, dishwasher, soft close draws and butler's pantry.

- Stunning master retreat with a big bay window, walk-through robe, and luxe ensuite boasting floor-to-ceiling tiles, dual vanities, and a frameless rainfall shower.
- Expansive undercroft storage area, offering an abundance of space to accommodate all your storage needs.

Set on a peaceful suburban street, this contemporary rendered residence sits on an elevated and low-maintenance 404 sqm block, exuding sophistication from the moment you arrive. The home is positioned far back from the road, creating an inviting entrance enhanced by verdant landscaping and manicured lawns flanking the long driveway. A stylish portico leads the way inside beside the double garage.

Beyond the grand entryway, a tiled foyer welcomes you into this sprawling double-storey masterpiece. The lower level is designed for comfort and versatility, with gleaming tiles adorning the spacious air-conditioned lounge--perfect for casual entertaining or unwinding after a long day.

Seamlessly flowing from this lounge is a chic modern kitchen, complete with a dining bar, glossy cabinetry, shimmering stone countertops, a plumbed-in fridge, premium electric appliances, a dishwasher, and sleek tinted-glass splashbacks.

Two timber-floored bedrooms, each with chrome ceiling fans and frosted-glass sliding robes, are also found on this level, accompanied by a stylish shared bathroom featuring floor-to-ceiling tiles, a frameless shower, and a laundrette. This private retreat is ideal for extended family members, adult children, or as a rental opportunity.

Ascending the floating timber staircase, a breathtaking void with cascading pendant lighting introduces the upper level--a true sanctuary of luxury. Stunning timber floors extend throughout the radiant open-plan lounge and dining area, where ducted air-conditioning and modern downlights create an atmosphere of comfort and style. A separate rumpus room offers the perfect setting for a media lounge, home office, or intimate entertaining space.

The showstopping upstairs kitchen is an absolute delight for culinary enthusiasts. Designed with both style and function in mind, this high-end tiled space features a chic island bench illuminated by glowing pendant lighting and adorned with trendy white tapware. This huge culinary hub is fitted with shimmering stone countertops, sleek tinted-glass splashbacks, and a wide array of glossy cabinetry. A huge 5-burner gas stovetop, wall-mounted oven and microwave combo, and a cleverly positioned dishwasher within the hidden butler's pantry makes this the ultimate space for effortless entertaining and gourmet meal preparation.

Extending from the living areas, a vast tiled balcony awaits--an entertainer's paradise, perfect for weekend gatherings or quiet morning coffees. Equipped with a discreet privacy screen and a serene treetop outlook, this outdoor haven offers the perfect balance of relaxation and sophistication.

The upper-level houses three additional timber-floored bedrooms, each equipped with built-in robes and ceiling fans. The grand master retreat is a sanctuary of indulgence,



LJ Hooker Property Partners
07 3344 0288

Disclaimer: All information contained therein is gathered from relevant third parties sources. We cannot guarantee or give any warranty about the information provided. Interested parties must rely solely on their own enquiries.

boasting a stunning textured tile feature wall, his-and-hers pendant lighting, a sunlit bay window, and a deluxe walk-through robe. The adjoining ensuite is pure luxury, featuring dual vanities, floor-to-ceiling tiles, and a frameless rainfall shower. A contemporary main bathroom, complete with sleek floor-to-ceiling tiles and a spacious shower, completes the layout.

Additional Features:

- 6.5 kW solar system
- Plumbing in garage
- Ethernet connectivity in rooms upstairs
- Ventilated roof
- Alarm system
- Internal laundry upstairs
- Ducted air conditioning upstairs
- Fully fenced and level backyard

Nestled in a wonderful location with untapped potential, this property is ideal for busy professionals, families, and students alike.

- 280 m to bus stop
- 290 m to Bill Moore Park
- 300 m to Little Angels Salisbury Early Learning Centre
- 850 m to Salisbury State School
- 1.3 km to Salisbury Train Station
- 1.5 km to St. Pius X Catholic Primary School
- 2.7 km to Griffith University, Nathan Campus
- 3 km to QE II Jubilee Hospital
- 5 km to Acacia Marketplace
- 5.2 km to Holland Park State High School
- 5.6 km to Market Square
- 5.7 km to Westfield Mt Gravatt

A residence of this calibre is an extraordinary find. Don't miss the chance to secure this stunning home at auction--contact Brendan Dingle or Ruby Crowther today to find out more!

All information contained herein is gathered from sources we consider to be reliable. However, we cannot guarantee or give any warranty about the information provided and interested parties must solely rely on their own enquiries.

BDD Pty Ltd with Sunnybank Districts P/L T/A LJ Hooker Property Partners
ABN 47 676 306 264 / 21 107 068 020



LJ Hooker Property Partners
07 3344 0288

Disclaimer: All information contained therein is gathered from relevant third parties sources. We cannot guarantee or give any warranty about the information provided. Interested parties must rely solely on their own enquiries.

More About this Property

Property ID	B2VBF4R
Property Type	House
Land Area	404 m2
Including	Ensuite Air Conditioning Ducted Cooling Alarm Dishwasher Outdoor Entertaining Floorboards Built-in-Robes Fully Fenced Remote Garage Solar Panels

Brendan Dingle 0401 500 412

Agent/Independent Contractor | brendandingle@ljhpp.com.au

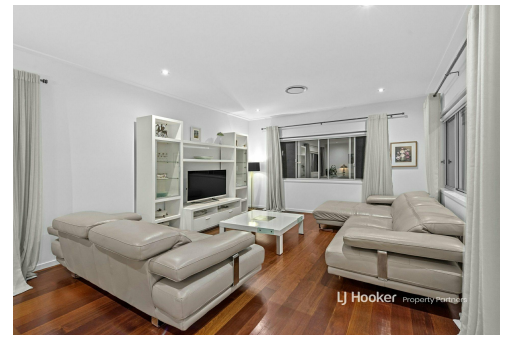
Ruby Crowther 0422 189 718

Sales Associate to Brendan Dingle | rubicrowther@ljhpp.com.au

LJ Hooker Property Partners 07 3344 0288

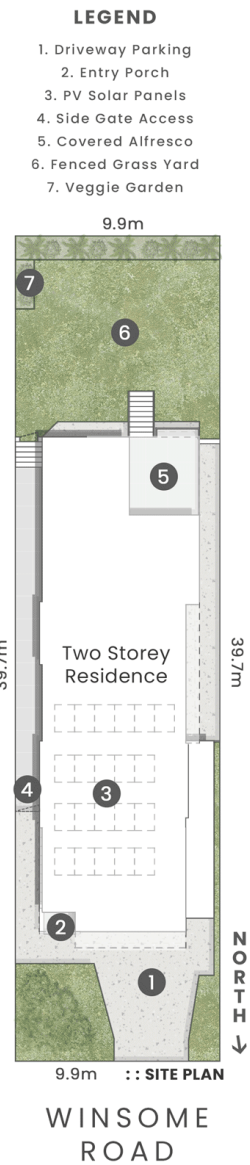
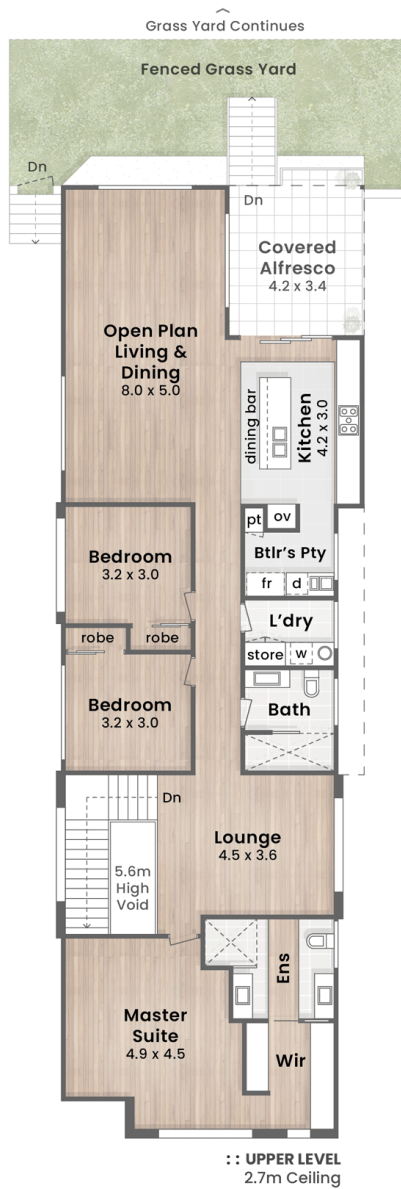
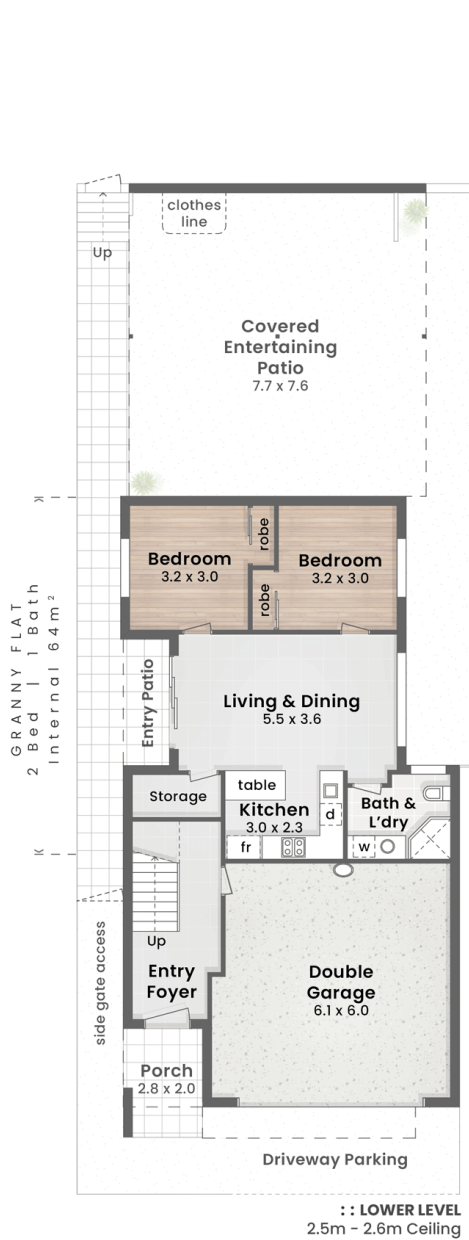
25 Pinelands Road, SUNNYBANK HILLS QLD 4109

propertypartners.ljhooker.com.au | sunnybankhills@ljhpp.com.au



Disclaimer: All information contained therein is gathered from relevant third parties sources. We cannot guarantee or give any warranty about the information provided. Interested parties must rely solely on their own enquiries.

LJ Hooker Property Partners
07 3344 0288



LJ Hooker
Property Partners

83 Winsome Road
SALISBURY

Internal 271m² | Alfresco, Patio & Porch 82m² | Total 353m²

🏠 404m² 🛏 5 Bed 🚿 3 Bath 🚗 2 Car + Off-Street

DISCLAIMER: This is not a legal document therefore all measurements and information provided is subject to survey. No permission is given to use or alter this Floor Plan without the consent of Pure Design Concepts. The overall presentation style, layout, imagery, fonts, background, colours and terminology has been originally created by PDC and is subject to strict copyright. No ownership is taken of building design. Find out more at puredesignconcepts.com.au

pdc.

LJ Hooker

LJ Hooker Property Partners
07 3344 0288

Disclaimer: All information contained therein is gathered from relevant third parties sources. We cannot guarantee or give any warranty about the information provided. Interested parties must rely solely on their own enquiries.