

1/55 Camira Way, Salisbury North

## Comfortable Living with Excellent Investment Potential

Simply a fantastic opportunity for first home buyers looking to enter the market or investors seeking a low-maintenance addition to their portfolio. The well-designed floorplan offers generously sized bedrooms and a spacious open plan living area, while still providing excellent functionality throughout the home.


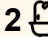
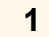
Features include:

- Master bedroom with walk-in robe and private ensuite
- Bedrooms 2 and 3 are complete with built-in robes
- Modern kitchen featuring stainless steel appliances, dishwasher and overlooking the open plan family living area
- Ducted reverse cycle heating and cooling for year-round comfort
- Backyard with established fruit trees and plenty of space to create your own outdoor retreat
- Automatic roller door to the carport with drive-through access plus additional off-street driveway parking

Whether you're an investor seeking dependable returns or a buyer searching for a modern, low-maintenance home in a growing community, this property is sure to impress.

Contact Ashley Palazzo today!

All information contained therein is gathered from relevant third parties sources. We cannot guarantee or give any warranty about the information provided. Interested parties must rely solely on their own enquiries.

3  2  1 

**FOR SALE**  
\$675,000- \$725,000

**VIEW**  
By Appointment

**AGENTS**  
Ashley Palazzo  
0414 347 884  
ashleyp@ljhsales.com.au

**AGENCY**  
LJ Hooker Property Specialists  
(08) 8289 6660

 **LJ Hooker**

All information provided has been obtained from sources we believe to be accurate, however, we cannot guarantee the information is accurate and we accept no liability for any errors or omissions (including but not limited to a property's land size, floor plans and size, building age and condition). Interested parties should make their own enquiries and obtain their own legal and financial advice. Should this property be scheduled for auction, the Vendor's Statement may be inspected at our LJ Hooker Property Specialists Real Estate office for 3 consecutive business days immediately preceding the auction and at the auction for 30 minutes before it starts.

RLA 208516

## MORE DETAILS

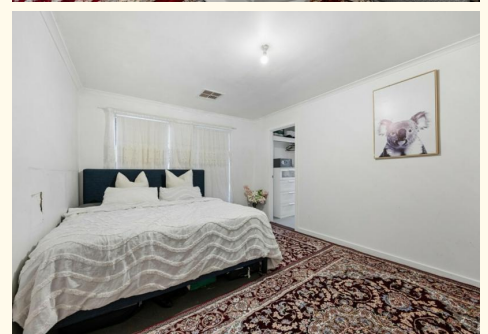
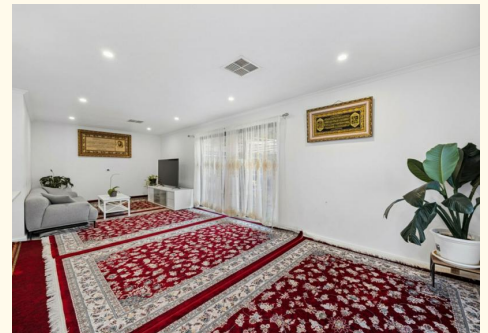
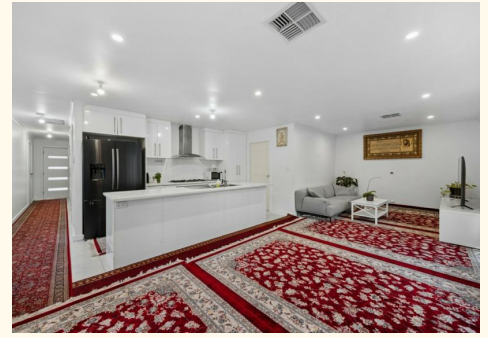
Property ID	2DD6GJU
Property Type	House
House Size	124 m2
Land Area	300 m2
Including	Air Conditioning Dishwasher Built-in-Robes

**Ashley Palazzo 0414 347 884**

Sales Specialist | [ashleyp@ljhsales.com.au](mailto:ashleyp@ljhsales.com.au)

**LJ Hooker Property Specialists (08) 8289 6660**

Shop 2, 1007 North East Road, RIDGEHAVEN SA 5097  
[propertyspecialists.ljhooker.com.au](http://propertyspecialists.ljhooker.com.au) | [info@ljhsupport.com.au](mailto:info@ljhsupport.com.au)





**SITE PLAN  
(NOT TO SCALE)**



Scale in metres. This drawing is for illustration purposes only. All measurements are approximate and details intended to be relied upon should be independently verified.

Produced by The Fotobase Group