

Salisbury East, 6 Debra Crescent

Welcome to Debra!

3 1 2

Auction Location: Onsite

For Sale

Auction (\$599,000)

View

ljhooker.com.au/2AU3GJU

Contact

Donna Staines

0456 844 103

donnas@ljhsales.com.au

AUCTION: Onsite, Saturday the 19th of October 2024 at 11:00am

This beautifully presented three-bedroom home in Salisbury East is an exceptional opportunity for both the savvy investors or first-time homebuyers. With freshly laid carpet throughout, this cozy residence exudes warmth and charm, inviting you in from the moment you arrive.

The spacious living area is filled with natural light, creating a perfect atmosphere for relaxation or entertaining. Each of the three well-appointed bedrooms offers generous space for family or visitors. The combined kitchen and dining area is ready for your culinary adventures, while the well-maintained backyard provides plenty of grass ideal for weekend barbecues or tranquil mornings with a cup of coffee.



Disclaimer: All information contained therein is gathered from relevant third parties sources.

We cannot guarantee or give any warranty about the information provided. Interested parties must rely solely on their own enquiries.

**LJ Hooker Greenwith | Golden Grove
| Mawson Lakes | Modbury
(08) 8289 6660**

Key Features:

- * Three spacious bedrooms
- * Bright and airy living area
- * Combined kitchen and dining space
- * Wall unit for heating and cooling
- * Gas heating for added comfort
- * Well-maintained backyard

Conveniently located, you'll have easy access to local schools, parks and shopping, making daily life a breeze. This home is not just neat and tidy, it's move-in ready for you to make it your own. Don't miss out on this incredible opportunity to secure a charming property that perfectly balances comfort and potential

All information provided has been obtained from sources we believe to be accurate, however, we cannot guarantee the information is accurate and we accept no liability for any errors or omissions (including but not limited to a property's land size, floor plans and size, building age and condition). Interested parties should make their own enquiries and obtain their own legal and financial advice. Should this property be scheduled for auction, the Vendor's Statement may be inspected at either of our two LJ Hooker Property Specialists Real Estate offices for 3 consecutive business days immediately preceding the auction and at the auction for 30 minutes before it starts.

RLA 208516

More About this Property

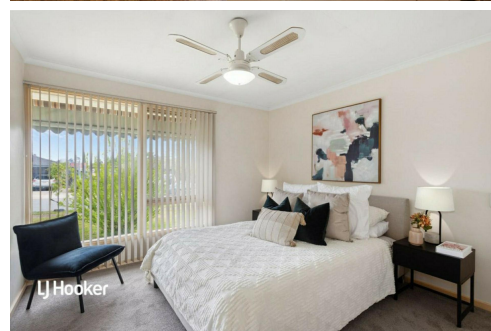
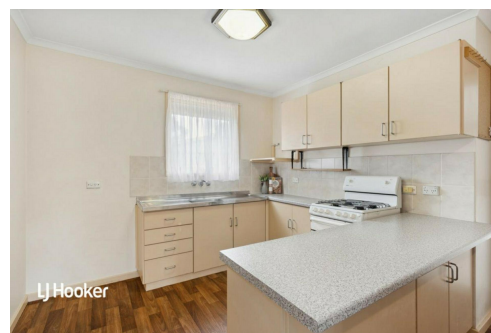
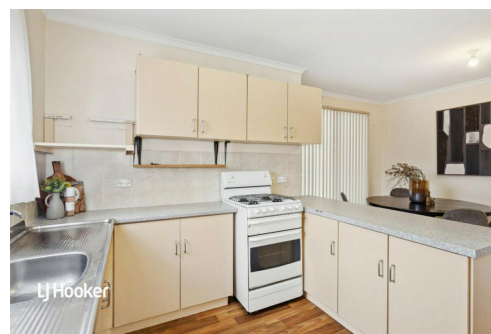
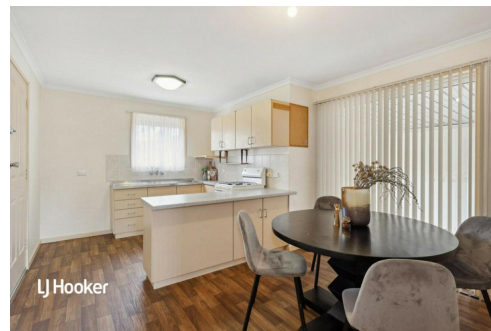
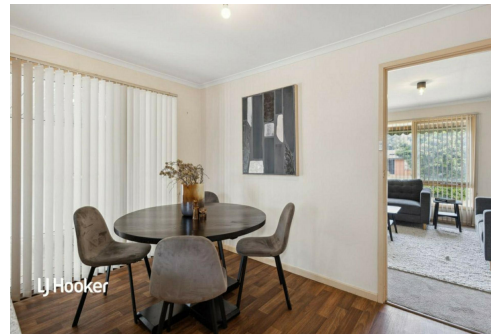
Property ID	2AU3GJU
Property Type	House
House Size	97 m ²
Land Area	600 m ²

Donna Staines 0456 844 103

Sales Specialist | donnas@ljhsales.com.au

LJ Hooker Greenwith | Golden Grove | Mawson Lakes | Modbury (08) 8289 6660

North East, Shop 2, 1007 North East Road, RIDGEHAVEN SA 5097
greenwithgoldengrove.ljhooker.com.au | info@ljhsupport.com.au



Disclaimer: All information contained therein is gathered from relevant third parties sources. We cannot guarantee or give any warranty about the information provided. Interested parties must rely solely on their own enquiries.

**LJ Hooker Greenwith | Golden Grove
| Mawson Lakes | Modbury
(08) 8289 6660**



DEBRA CRESCENT

SITE PLAN
(NOT TO SCALE)

Scale in metres. This drawing is for illustration purposes only. All measurements are approximate and details intended to be relied upon should be independently verified.

Produced by The Fotobase Group