

Salisbury East, 5 Barwon Court

A Home That Has It All

4 1 1

Auction Location: Onsite

Nestled in a quiet court, far from the hustle and bustle, this solid brick family home offers the perfect blend of space, comfort, security and a new lifestyle. Featuring four spacious bedrooms, the master is impressive with a walk-in robe, built-in robe, ceiling fan and electric roller shutter. Bedrooms two, three and four are all fitted with built-in robes, with ceiling fans in bedrooms three and four. The home showcases stylish floorboards throughout the bedrooms and tiles in all other areas, ensuring low-maintenance and a modern look.

With two dining areas, including one that overlooks the sparkling in-ground pool, and two living areas—one at the front and one also overlooking the pool—this home is designed for easy living and effortless entertainment.

For added convenience, the property includes a shed/workshop with drive-through access,

For Sale

Auction (\$649,000)

View

ljhooker.com.au/2AQHGJU

Contact

Donna Staines

0456 844 103

donnas@ljhsales.com.au



Disclaimer: All information contained therein is gathered from relevant third parties sources.

We cannot guarantee or give any warranty about the information provided. Interested parties must rely solely on their own enquiries.

**LJ Hooker Greenwith | Golden Grove
| Mawson Lakes | Modbury
(08) 8289 6660**

undercover entertaining area and electric roller shutters at the front for extra security. An alarm system completes this comprehensive package, making this a home that truly has it all.

Features you'll love

- * Four spacious bedrooms
- * Centralised bathroom
- * Evaporative cooling
- * Gas wall heater and combustion heater
- * Gas cooking / Gas hot water
- * Study nook
- * Electric roller shutters to the front of the house
- * Alarm system
- * Solid brick

Salisbury East is a thriving suburb known for its family friendly atmosphere, excellent schools and convenient amenities. You'll be within walking distance and easy reach to Gloucester shops, parks and public transport. Discover the ultimate blend of convenience and natural beauty in Salisbury East, where this inviting home awaits with a park and reserve just moments away.

Situated on a generous sized allotment this home is perfect for a first home buyer, families and investor. Don't miss the opportunity to secure this one!

All information provided has been obtained from sources we believe to be accurate, however, we cannot guarantee the information is accurate and we accept no liability for any errors or omissions (including but not limited to a property's land size, floor plans and size, building age and condition). Interested parties should make their own enquiries and obtain their own legal and financial advice. Should this property be scheduled for auction, the Vendor's Statement may be inspected at either of our two LJ Hooker Property Specialists Real Estate offices for 3 consecutive business days immediately preceding the auction and at the auction for 30 minutes before it starts.

RLA 208516

More About this Property

Property ID	2AQHGJU
Property Type	House
House Size	164 m²
Land Area	640 m²

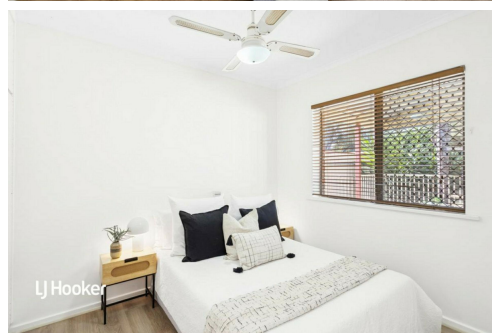
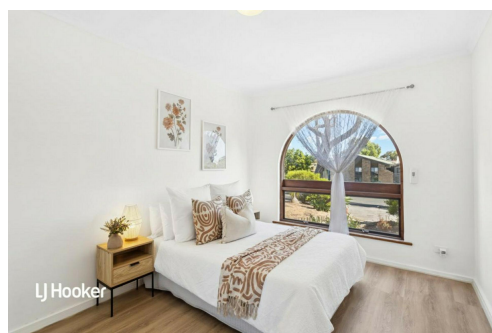
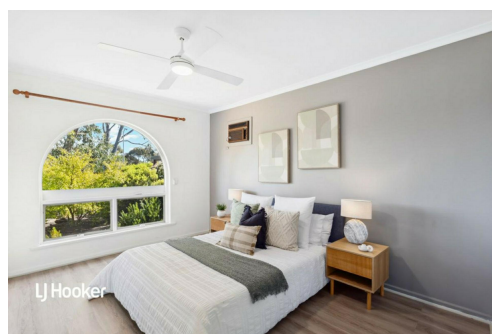
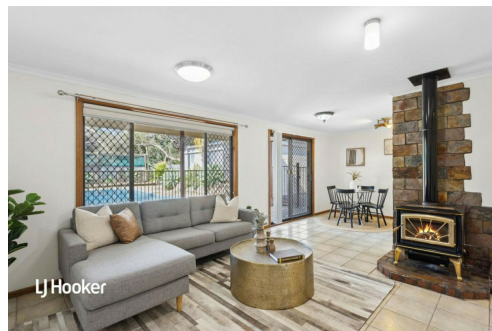
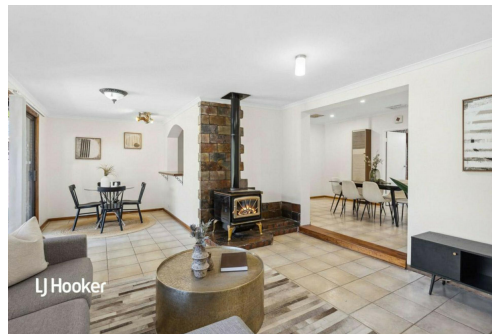
Donna Staines 0456 844 103
Sales Specialist | donnas@ljhsales.com.au

LJ Hooker Greenwith | Golden Grove | Mawson Lakes | Modbury (08) 8289 6660

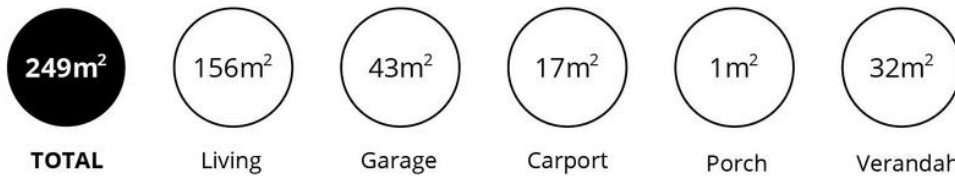
North East, Shop 2, 1007 North East Road, RIDGEHAVEN SA 5097
greenwithgoldengrove.ljhooker.com.au | info@ljhsupport.com.au



Disclaimer: All information contained therein is gathered from relevant third parties sources. We cannot guarantee or give any warranty about the information provided. Interested parties must rely solely on their own enquiries.



**LJ Hooker Greenwith | Golden Grove
| Mawson Lakes | Modbury
(08) 8289 6660**



Scale in metres. This drawing is for illustration purposes only. All measurements are approximate and details intended to be relied upon should be independently verified.

Produced by **The Fotobase Group**