

Salisbury East, 38 Jacaranda Drive

Welcome home

Auction Location: Onsite

AUCTION: Onsite, Tuesday the 19th of November 2024 at 6:00pm

Welcome to this beautifully refreshed home, where the spacious front lounge room invites you to relax while enjoying views of outdoors. With plenty of natural lighting streaming through, filling the room with a relaxed atmosphere. Equipped with a split system, this space promises year-round comfort. Throughout the home, elegant timber floors add character, complemented by brand-new carpet in the lounge and bedrooms. Freshly painted throughout this home creates a modern and move-in-ready feel.

Offering three spacious bedrooms, each thoughtfully designed with ceiling fans and built-in robes for ample storage. The master bedroom and bedroom three are equipped with split systems, providing personalized comfort in every season.



Disclaimer: All information contained therein is gathered from relevant third parties sources. We cannot guarantee or give any warranty about the information provided. Interested parties must rely solely on their own enquiries.

3 1 1

For Sale
\$565,000

View
ljhooker.com.au/2AZMGJU

Contact
Donna Staines
0456 844 103
donnas@ljhsales.com.au

**LJ Hooker Greenwith | Golden Grove
| Mawson Lakes | Modbury
(08) 8289 6660**

Features you'll love

- * Three spacious bedrooms
- * Master bedroom with split system, ceiling fan and built-in robe
- * Bedroom two with ceiling fan and built-in robe
- * Bedroom three with split system, ceiling fan and built-in robe
- * Updated kitchen with ample storage
- * Gas hot water service
- * Outdoor entertaining
- * Drive through access to shed
- * Fruit trees
- * Rain water tank

Salisbury East is a thriving suburb known for its family friendly atmosphere, excellent schools and convenient amenities. You'll be within walking distance and easy reach to shops, parks and public transport. Discover the ultimate blend of convenience and natural beauty in Salisbury East, where this inviting home awaits with a park and reserve just moments away.

Situated on a generous sized allotment this home is perfect for a first home buyer, small family, downsizers or investor. Don't miss the opportunity to secure this one.

CT | 5525/343

Built | 1966

Frontage | 18.29 (approx.)

Easements | No

Gas connected | Yes

All information provided has been obtained from sources we believe to be accurate, however, we cannot guarantee the information is accurate and we accept no liability for any errors or omissions (including but not limited to a property's land size, floor plans and size, building age and condition). Interested parties should make their own enquiries and obtain their own legal and financial advice. Should this property be scheduled for auction, the Vendor's Statement may be inspected at either of our two LJ Hooker Property Specialists Real Estate offices for 3 consecutive business days immediately preceding the auction and at the auction for 30 minutes before it starts.

RLA 208516



Disclaimer: All information contained therein is gathered from relevant third parties sources. We cannot guarantee or give any warranty about the information provided. Interested parties must rely solely on their own enquiries.

**LJ Hooker Greenwith | Golden Grove
| Mawson Lakes | Modbury
(08) 8289 6660**

More About this Property

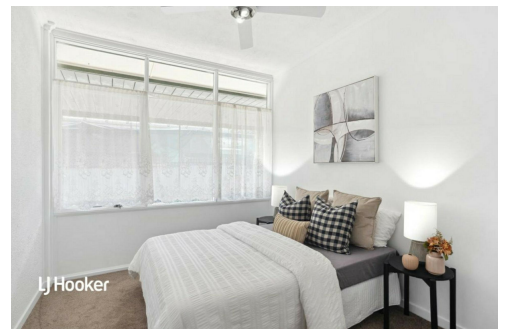
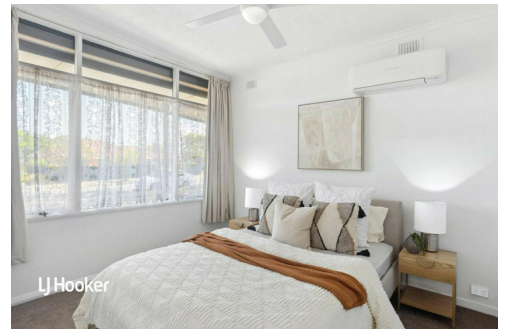
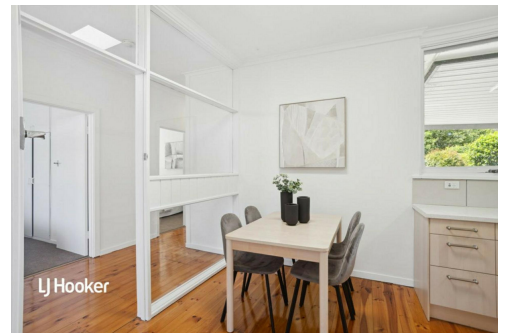
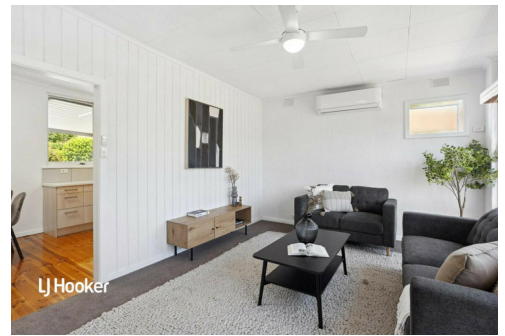
Property ID	2AZMGJU
Property Type	House
House Size	112 m ²
Land Area	590 m ²
Including	Air Conditioning Floorboards Built-in-Robes Secure Parking Water Tank

Donna Staines 0456 844 103

Sales Specialist | donnas@ljhsales.com.au

LJ Hooker Greenwith | Golden Grove | Mawson Lakes | Modbury (08) 8289 6660

North East, Shop 2, 1007 North East Road, RIDGEHAVEN SA 5097
greenwithgoldengrove.ljhooker.com.au | info@ljhsupport.com.au



Disclaimer: All information contained therein is gathered from relevant third parties sources.
We cannot guarantee or give any warranty about the information provided. Interested parties must rely solely on their own enquiries.

**LJ Hooker Greenwith | Golden Grove
| Mawson Lakes | Modbury
(08) 8289 6660**



JACARANDA DRIVE

**SITE PLAN
(NOT TO SCALE)**

Scale in metres. This drawing is for illustration purposes only. All measurements are approximate and details intended to be relied upon should be independently verified.

Produced by The Fotobase Group