

## Salisbury East, 37 Turquoise Drive

### Renovated Retreat

3 1 1

**For Sale**  
\$660,000

**View**  
[ljhooker.com.au/2BNZGJU](http://ljhooker.com.au/2BNZGJU)

**Contact**  
**Donna Staines**  
0456 844 103  
[donnas@ljhsales.com.au](mailto:donnas@ljhsales.com.au)

Set on a generous corner allotment of approximately 670sqm, this beautifully updated home in Salisbury East offers the perfect fusion of modern living, spacious design, and effortless entertaining. Ideal for families who value style, comfort, and room to grow, this is a home that truly ticks all the boxes.

Inside, you'll be impressed by the fresh, contemporary feel throughout - from the renovated kitchen and bathroom to the polished timber floors that flow through the main living areas. With two separate living zones - one at the front and one at the rear - you'll have the flexibility to relax in peace, host unforgettable gatherings or create the perfect kids retreat.

Step outside and you're greeted with a generous outdoor space - perfect for weekend BBQs, a game of backyard cricket, or simply letting the kids and pets roam free. This move-in-ready home is the ultimate blend of function and lifestyle, all in a location loved by families.



**Disclaimer:** All information contained therein is gathered from relevant third parties sources. We cannot guarantee or give any warranty about the information provided. Interested parties must rely solely on their own enquiries.

**LJ Hooker Greenwith | Golden Grove**  
**| Mawson Lakes | Modbury**  
**(08) 8289 6660**

#### What You'll Love:

- \* Three spacious bedrooms, master complete with built-in robe and ceiling fan
- \* Two separate living areas for added flexibility
- \* Split system heating and cooling in both lounge rooms for year-round comfort
- \* 6.6kW (approx.) solar panel system to help reduce energy costs
- \* Abundant natural light throughout
- \* Recently replaced gas hot water system
- \* Renovated kitchen featuring gas stovetop, gas hot water, and dishwasher
- \* Beautifully polished timber floors through main living areas

Located in the heart of Salisbury East, a vibrant suburb celebrated for its family-friendly vibe, excellent schools, and easy access to shops, parks, and public transport. Enjoy the convenience of city living with the tranquillity of nearby reserves and green spaces just moments from your door.

This is more than just a home - it's a lifestyle upgrade!

All information provided has been obtained from sources we believe to be accurate, however, we cannot guarantee the information is accurate and we accept no liability for any errors or omissions (including but not limited to a property's land size, floor plans and size, building age and condition). Interested parties should make their own enquiries and obtain their own legal and financial advice. Should this property be scheduled for auction, the Vendor's Statement may be inspected at either of our two LJ Hooker Property Specialists Real Estate offices for 3 consecutive business days immediately preceding the auction and at the auction for 30 minutes before it starts.

RLA 208516

## More About this Property

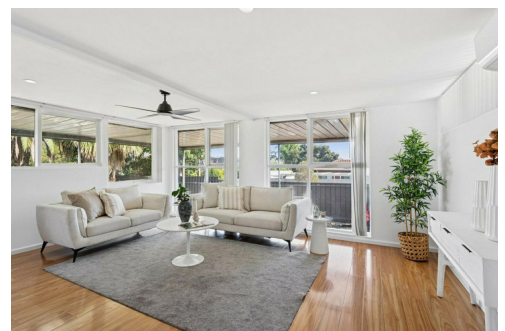
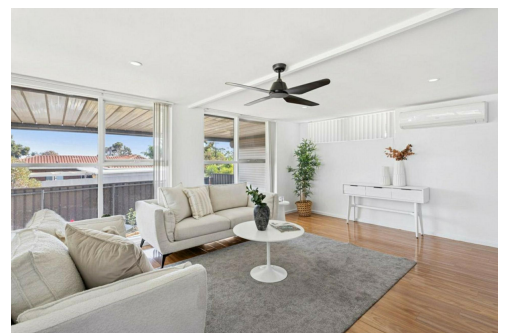
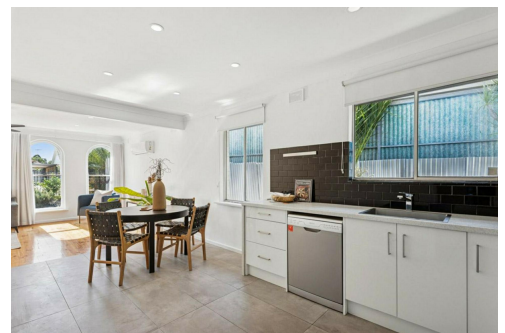
Property ID	2BNZGJU
Property Type	House
House Size	111 m2
Land Area	670 m2

**Donna Staines 0456 844 103**

Sales Specialist | [donnas@ljhsales.com.au](mailto:donnas@ljhsales.com.au)

**LJ Hooker Greenwith | Golden Grove | Mawson Lakes | Modbury (08) 8289 6660**

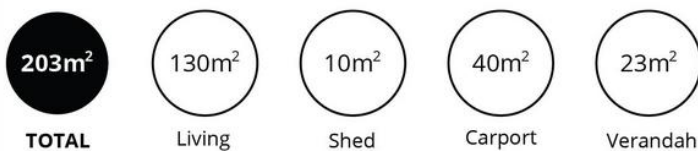
North East, Shop 2, 1007 North East Road, RIDGEHAVEN SA 5097  
[greenwithgoldengrove.ljhooker.com.au](http://greenwithgoldengrove.ljhooker.com.au) | [info@ljhsupport.com.au](mailto:info@ljhsupport.com.au)



**Disclaimer:** All information contained therein is gathered from relevant third parties sources. We cannot guarantee or give any warranty about the information provided. Interested parties must rely solely on their own enquiries.

**LJ Hooker Greenwith | Golden Grove  
| Mawson Lakes | Modbury  
(08) 8289 6660**





Scale in metres. This drawing is for illustration purposes only. All measurements are approximate and details intended to be relied upon should be independently verified.

Produced by The Fotobase Group