

Salisbury East, 30 Northbri Avenue

Endless Opportunities

Are you ready to unlock the potential of your new home? Look no further! We proudly present to you a rare opportunity —a spacious allotment in Salisbury East, offering approximately 720sqm of endless possibilities. This cherished home has been loved and cared for over decades by the same owners. Meticulously maintained over the years and now ready for a new family to enjoy!

Features you'll love

- * Offering three bedrooms, both master and bedroom two with built in robes and ceiling fans
- * Zoned ducted reverse cycle heating and cooling
- * Timber floors
- * Linen storage
- * Solid brick home
- * Kitchen with gas stove and electric oven



Disclaimer: All information contained therein is gathered from relevant third parties sources. We cannot guarantee or give any warranty about the information provided. Interested parties must rely solely on their own enquiries.



For Sale

Auction (\$510,000)

View

ljhooker.com.au/2A73GJU

Contact

Donna Staines

0456 844 103

donnas@ljhsales.com.au

**LJ Hooker Greenwith | Golden Grove
| Mawson Lakes | Modbury
(08) 8289 6660**

- * Shed with power
- * 12x Fruit trees (mandarin, fig, lemon, plum, pink lady apples, peach, lime and nectarine)

Discover the ultimate blend of convenience and natural beauty in Salisbury East, where this inviting home awaits with a park and reserve directly across the road. Embrace a lifestyle of leisure, recreation and stunning views.

Salisbury East is a thriving suburb known for its family friendly atmosphere, excellent schools and convenient amenities. You'll be within easy reach of shopping centres, parks and public transport.

Auction —May the 18th at 12.00pm, on-site

CT —5735|81

Easement | No

Frontage | 18.20 (approx.)

Land size 720sqm (approx.)

Council rates | \$1265.85 (approx.)

All information provided has been obtained from sources we believe to be accurate, however, we cannot guarantee the information is accurate and we accept no liability for any errors or omissions (including but not limited to a property's land size, floor plans and size, building age and condition). Interested parties should make their own enquiries and obtain their own legal and financial advice. Should this property be scheduled for auction, the Vendor's Statement may be inspected at either of our two LJ Hooker Property Specialists Real Estate offices for 3 consecutive business days immediately preceding the auction and at the auction for 30 minutes before it starts.

RLA 208516

More About this Property

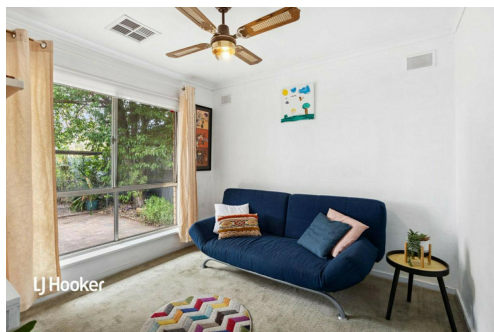
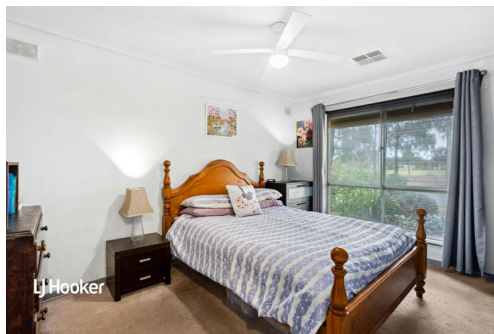
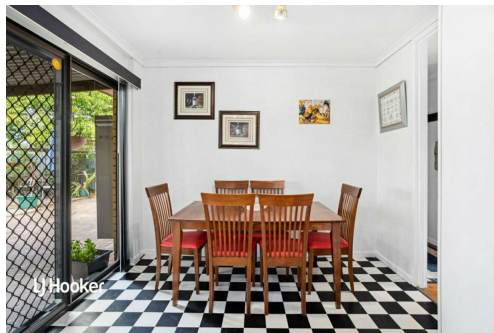
Property ID	2A73GJU
Property Type	House
House Size	97 m²
Land Area	720 m²
Including	Air Conditioning Ducted Cooling Ducted Heating Built-in-Robes Secure Parking

Donna Staines 0456 844 103
Sales Specialist | donnas@ljhsales.com.au

LJ Hooker Greenwith | Golden Grove | Mawson Lakes | Modbury (08) 8289 6660
North East, Shop 2, 1007 North East Road, RIDGEHAVEN SA 5097
greenwithgoldengrove.ljhooker.com.au | info@ljhsupport.com.au



Disclaimer: All information contained therein is gathered from relevant third parties sources. We cannot guarantee or give any warranty about the information provided. Interested parties must rely solely on their own enquiries.



**LJ Hooker Greenwith | Golden Grove
| Mawson Lakes | Modbury
(08) 8289 6660**



Scale in metres. This drawing is for illustration purposes only. All measurements are approximate and details intended to be relied upon should be independently verified.

Produced by **The Fotobase Group**