

## Salisbury East, 16 Harvey Drive

### NEST OR INVEST

3 1 2

Auction Location: Onsite

AUCTION: Onsite, Sunday the 20th of October 2024 at 10:00am

Built in 1966, this solid brick 3-bedroom home is one that is sure to please! Featuring new carpets, polished floorboards, a large workshop/garage and opposite a reserve, these are just some of the reasons 16 Harvey Drive is a "must see". Set on an easement free allotment of approximately 570sqm and whether you are looking for a place to call home or an investment opportunity this property ticks all the boxes.

Features you will love:

- \* 3 spacious bedrooms all with new carpets, master with ceiling fan
- \* Formal lounge with polished floorboards, split system a/c and ceiling fan
- \* Timber kitchen with dishwasher, gas cook top and ceiling fan



**Disclaimer:** All information contained therein is gathered from relevant third parties sources. We cannot guarantee or give any warranty about the information provided. Interested parties must rely solely on their own enquiries.

**For Sale**  
Auction

**View**  
[ljhooker.com.au/2AV0GJU](https://ljhooker.com.au/2AV0GJU)

**Contact**  
**Bruno Caporella**  
0439 679 020  
[brunoc@ljhsales.com.au](mailto:brunoc@ljhsales.com.au)  
**Donna Staines**  
0456 844 103  
[donnas@ljhsales.com.au](mailto:donnas@ljhsales.com.au)

**LJ Hooker Greenwith | Golden Grove**  
**| Mawson Lakes | Modbury**  
**(08) 8289 6660**



- \* Ducted evaporative cooling
- \* Tidy bathroom
- \* Separate toilet
- \* Large workshop/garage
- \* Secure undercover parking
- \* Well maintained, fully enclosed backyard

Close to all the amenities you need, don't hesitate to enquire today.

All information provided has been obtained from sources we believe to be accurate, however, we cannot guarantee the information is accurate and we accept no liability for any errors or omissions (including but not limited to a property's land size, floor plans and size, building age and condition). Interested parties should make their own enquiries and obtain their own legal and financial advice. Should this property be scheduled for auction, the Vendor's Statement may be inspected at either of our two LJ Hooker Property Specialists Real Estate offices for 3 consecutive business days immediately preceding the auction and at the auction for 30 minutes before it starts.

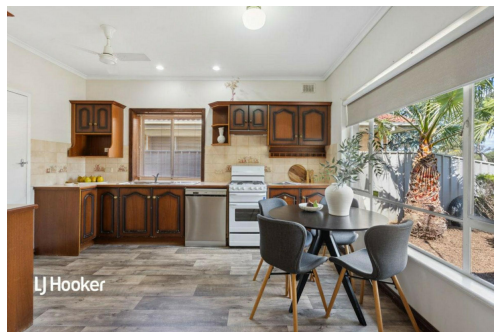
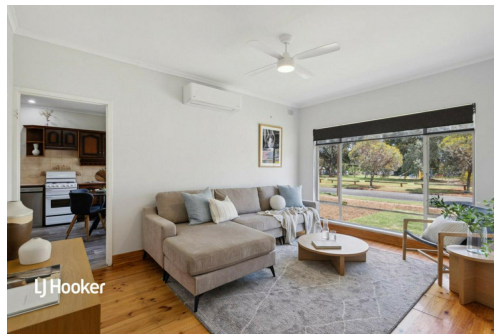
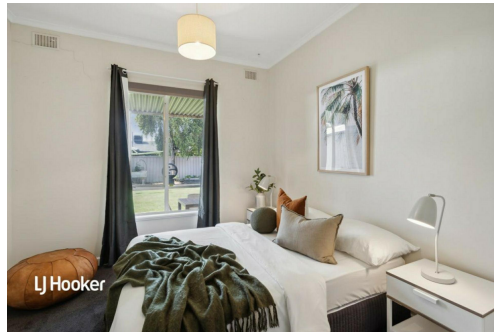
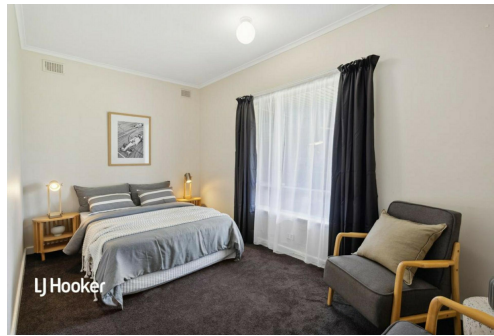
RLA 208516

## More About this Property

Property ID	2AV0GJU
Property Type	House
House Size	97 m²
Land Area	570 m²
Including	Air Conditioning Evaporative Cooling Dishwasher Workshop Secure Parking

**Bruno Caporella 0439 679 020**  
Sales Specialist | [brunoc@ljhsales.com.au](mailto:brunoc@ljhsales.com.au)  
**Donna Staines 0456 844 103**  
Sales Specialist | [donnas@ljhsales.com.au](mailto:donnas@ljhsales.com.au)

**LJ Hooker Greenwith | Golden Grove | Mawson Lakes | Modbury (08) 8289 6660**  
North East, Shop 2, 1007 North East Road, RIDGEHAVEN SA 5097  
[greenwithgoldengrove.ljhooker.com.au](http://greenwithgoldengrove.ljhooker.com.au) | [info@ljhsupport.com.au](mailto:info@ljhsupport.com.au)



**Disclaimer:** All information contained therein is gathered from relevant third parties sources. We cannot guarantee or give any warranty about the information provided. Interested parties must rely solely on their own enquiries.

**LJ Hooker Greenwith | Golden Grove  
| Mawson Lakes | Modbury  
(08) 8289 6660**



**HARVEY DRIVE**

**SITE PLAN  
(NOT TO SCALE)**

Scale in metres. This drawing is for illustration purposes only. All measurements are approximate and details intended to be relied upon should be independently verified.

Produced by The Fotobase Group



**LJ Hooker Greenwith | Golden Grove  
| Mawson Lakes | Modbury  
(08) 8289 6660**

**Disclaimer:** All information contained therein is gathered from relevant third parties sources. We cannot guarantee or give any warranty about the information provided. Interested parties must rely solely on their own enquiries.