

Salisbury East, 15 Jade Court

Endless Possibilities!

Auction Location: On-site

Welcome to Jade Court! Three bedrooms and solid brick, this beauty was built in 1975 and has so much warmth and character. Nestled in a serene neighbourhood where pride of ownership shines through. Meticulously maintained and cherished over the years, this home is a testament to timeless quality and enduring style.

As you step inside, you're greeted by a welcoming layout, designed for comfortable living. With superior carpet, french doors and gas heating surrounding the lounge room this offers a perfect atmosphere for relaxation.

This home offers not one, but two versatile rumpus/studio spaces outside. Imagine the endless possibilities to run a business from home, create the ultimate teenagers retreat or create a hobbies area outside of the home.

Features



Disclaimer: All information contained therein is gathered from relevant third parties sources.

We cannot guarantee or give any warranty about the information provided. Interested parties must rely solely on their own enquiries.



For Sale

Auction (\$529,000)

View

ljhooker.com.au/2A53GJU

Contact

Donna Staines

0456 844 103

donnas@ljhsales.com.au

**LJ Hooker Greenwith | Golden Grove
| Mawson Lakes | Modbury
(08) 8289 6660**

- * Offering three bedrooms, bedroom two with built in robes
- * Superior carpet throughout with floor boards in kitchen/dining
- * Gas heating/split system in lounge room, evaporative cooling throughout
- * Renovated bathroom with floor to ceiling tiles
- * Gas cooktop/hot water
- * Rain water tank
- * Automatic roller door

Don't miss this rare opportunity to own a piece of history and create new memories in a home that has stood the test of time. Ideally situated and located close to local schools including both public and private, local cafes, shops and public transport. Just a short drive to Saints road, Golden Grove and Tea Tree Plaza shopping centre.

CT | 5634/923

Easement | NO

Frontage | 20.42 (approx.)

Gas | Connected

Council rates | \$1532 (approx.)

NBN | Connected

All information provided has been obtained from sources we believe to be accurate, however, we cannot guarantee the information is accurate and we accept no liability for any errors or omissions (including but not limited to a property's land size, floor plans and size, building age and condition). Interested parties should make their own enquiries and obtain their own legal and financial advice. Should this property be scheduled for auction, the Vendor's Statement may be inspected at either of our two LJ Hooker Property Specialists Real Estate offices for 3 consecutive business days immediately preceding the auction and at the auction for 30 minutes before it starts.

RLA 208516

More About this Property

Property ID	2A53GJU
Property Type	House
House Size	114 m ²
Land Area	740 m ²
Including	Air Conditioning Evaporative Cooling Workshop Built-in-Robes Secure Parking Remote Garage Water Tank

Donna Staines 0456 844 103

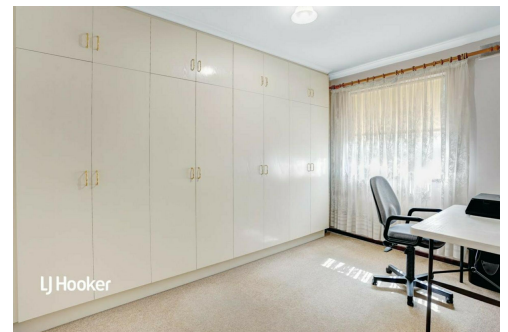
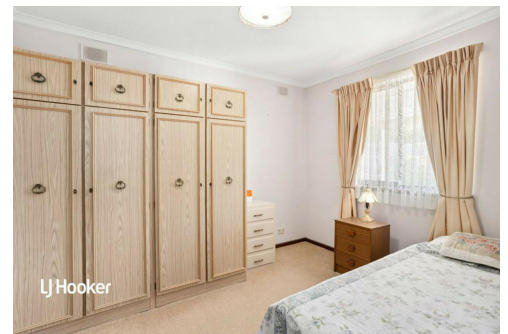
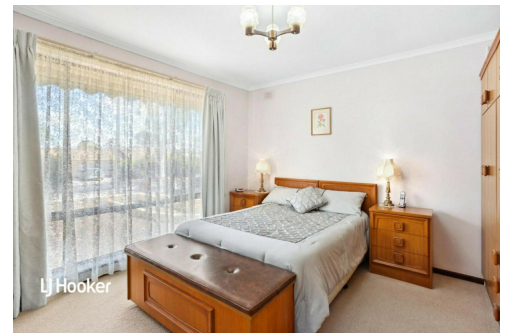
Sales Specialist | donnas@ljhsales.com.au

LJ Hooker Greenwith | Golden Grove | Mawson Lakes | Modbury (08) 8289 6660

North East, Shop 2, 1007 North East Road, RIDGEHAVEN SA 5097
greenwithgoldengrove.ljhooker.com.au | info@ljhsupport.com.au



Disclaimer: All information contained therein is gathered from relevant third parties sources. We cannot guarantee or give any warranty about the information provided. Interested parties must rely solely on their own enquiries.



**LJ Hooker Greenwith | Golden Grove
 | Mawson Lakes | Modbury
 (08) 8289 6660**



Scale in metres. This drawing is for illustration purposes only. All measurements are approximate and details intended to be relied upon should be independently verified.

Produced by The Fotobase Group