

Salisbury East, 13 Galloway Avenue

Entertain In Style On Galloway!

3 1 1

For Sale
\$750,000

View
ljhooker.com.au/2B1ZGJU

Contact
Donna Staines
0456 844 103
donnas@ljhsales.com.au

Step into a home that effortlessly blends elegance with practicality. Boasting modern tiles throughout, this home features a renovated kitchen with premium stainless-steel appliances, including a double oven and dishwasher. This family home is packed with top-tier upgrades, from a 5kW (approx.) solar system to electric roller shutters encasing the entire home, ensuring energy efficiency and privacy. Downlights add a warm but sophisticated glow, while reverse cycle heating and cooling provide ultimate year-round comfort. Every corner of this home has been thoughtfully designed to offer modern living at its finest.

The outdoor entertaining area will steal the spotlight. A stunning pitched pergola, complete with café blinds, transforms into an all-weather entertaining haven, ideal for hosting family and friends.

The garage/workshop with drive-through access and the powered shed with concrete



Disclaimer: All information contained therein is gathered from relevant third parties sources. We cannot guarantee or give any warranty about the information provided. Interested parties must rely solely on their own enquiries.

LJ Hooker Greenwith | Golden Grove
| Mawson Lakes | Modbury
(08) 8289 6660

flooring are perfect for projects or additional storage. Sensor lights in the rear yard provide added security for late arrivals, while an electric roller door adds convenience. This incredible outdoor area promises unforgettable moments and is ready to become the backdrop for your cherished memories.

Features you'll love

- * Three bedrooms, master bedroom with built in robe and plenty of natural lighting
- * Renovated kitchen with double oven and dishwasher
- * Downlights through the house
- * Reverse cycle heating and cooling for year-round comfort
- * Electric roller shutters around the whole house
- * Solar panels (5kw approx.)
- * Gas hot water service
- * Workshop/Shed with power and concrete flooring
- * Electric roller door with drive through access to workshop

Salisbury East is a thriving suburb known for its family friendly atmosphere, excellent schools and convenient amenities. You'll be within walking distance and easy reach to Gloucester shops, parks and public transport. Discover the ultimate blend of convenience and natural beauty in Salisbury East, where this inviting home awaits with a park and reserve just moments away.

All information provided has been obtained from sources we believe to be accurate, however, we cannot guarantee the information is accurate and we accept no liability for any errors or omissions (including but not limited to a property's land size, floor plans and size, building age and condition). Interested parties should make their own enquiries and obtain their own legal and financial advice. Should this property be scheduled for auction, the Vendor's Statement may be inspected at either of our two LJ Hooker Property Specialists Real Estate offices for 3 consecutive business days immediately preceding the auction and at the auction for 30 minutes before it starts.

RLA 208516



Disclaimer: All information contained therein is gathered from relevant third parties sources. We cannot guarantee or give any warranty about the information provided. Interested parties must rely solely on their own enquiries.

**LJ Hooker Greenwith | Golden Grove
| Mawson Lakes | Modbury
(08) 8289 6660**

More About this Property

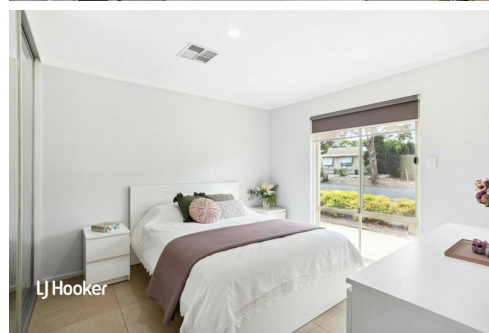
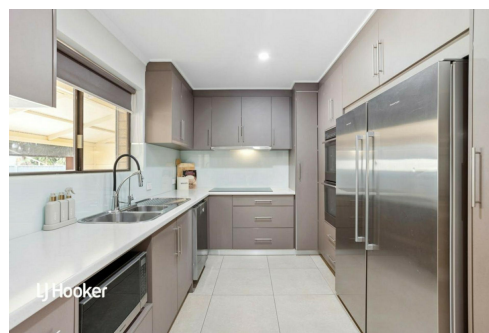
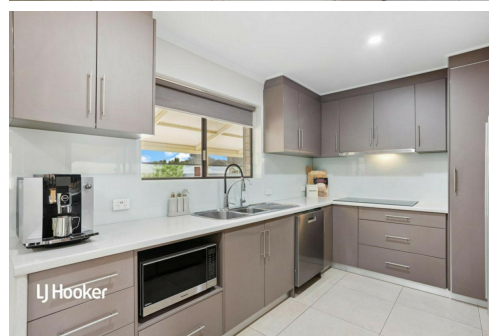
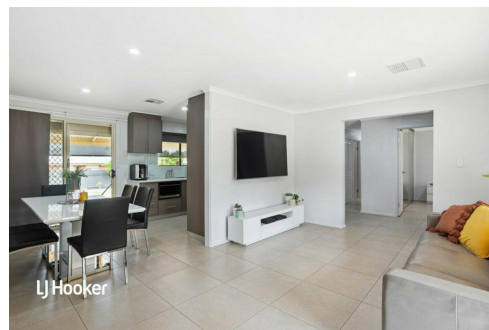
Property ID	2B1ZGJU
Property Type	House
House Size	107 m ²
Land Area	620 m ²
Including	Air Conditioning Ducted Cooling Ducted Heating Dishwasher Workshop Built-in-Robes Secure Parking Remote Garage Solar Panels

Donna Staines 0456 844 103

Sales Specialist | donnas@ljhsales.com.au

LJ Hooker Greenwith | Golden Grove | Mawson Lakes | Modbury (08) 8289 6660

North East, Shop 2, 1007 North East Road, RIDGEHAVEN SA 5097
greenwithgoldengrove.ljhooker.com.au | info@ljhsupport.com.au



Disclaimer: All information contained therein is gathered from relevant third parties sources.
We cannot guarantee or give any warranty about the information provided. Interested parties must rely solely on their own enquiries.

**LJ Hooker Greenwith | Golden Grove
| Mawson Lakes | Modbury
(08) 8289 6660**



GALLOWAY AVENUE

**SITE PLAN
(NOT TO SCALE)**

Scale in metres. This drawing is for illustration purposes only. All measurements are approximate and details intended to be relied upon should be independently verified.

Produced by The Fotobase Group