

Salisbury East, 11 Snowdon Avenue

A Place to Call Home!

Introducing this wonderful 3-bedroom family home, built in 1967 and situated on a generous allotment of 610m² (approx.). Boasting a spacious family room with large windows overlooking the front yard and a gas wall heater to get you through winter. You'll love the updated kitchen with modern appliances, along with polished original timber floorboards throughout. Outside there is ample space to host large family gatherings underneath the pitched roof pergola and a lawn area for the family pet.

Features Include:

- * 3 Bedrooms, built-in robes in bedrooms one and two
- * Spacious family room
- * Meal's area adjacent to modern updated kitchen, featuring oven, gas cooktop with rangehood, dishwasher and tiled splashback



Disclaimer: All information contained therein is gathered from relevant third parties sources. We cannot guarantee or give any warranty about the information provided. Interested parties must rely solely on their own enquiries.



For Sale

\$549,000 - \$589,000

View

ljhooker.com.au/29T5GJU

Contact

Donna Staines

0456 844 103

donnas@ljhsales.com.au

Shaun Roberts

0435 367 534

shaunr@ljhsales.com.au

**LJ Hooker Greenwith | Golden Grove | Mawson Lakes | Modbury
(08) 8289 6660**

- * Evaporative ducted cooling throughout
- * Gas wall heater
- * Polished wood floors
- * Roller shutters on all front windows
- * Ceiling fans through the home
- * Large outdoor entertaining area overlooking the rear yard
- * Large workshop garage accessible through carport

Perfect for young growing families or couples looking to secure space for children to grow up. Located within walking distance to nearby schools, sporting clubs and local shops. Also offering easy access out to Main North Road for those commuting across town.

Inspection is a must, inquire today!

All information provided has been obtained from sources we believe to be accurate, however, we cannot guarantee the information is accurate and we accept no liability for any errors or omissions (including but not limited to a property's land size, floor plans and size, building age and condition). Interested parties should make their own enquiries and obtain their own legal and financial advice. Should this property be scheduled for auction, the Vendor's Statement may be inspected at either of our two LJ Hooker Property Specialists Real Estate offices for 3 consecutive business days immediately preceding the auction and at the auction for 30 minutes before it starts.

RLA 208516

More About this Property

Property ID	29T5GJU
Property Type	House
House Size	110 m ²
Land Area	610 m ²
Including	Air Conditioning Secure Parking

Donna Staines 0456 844 103

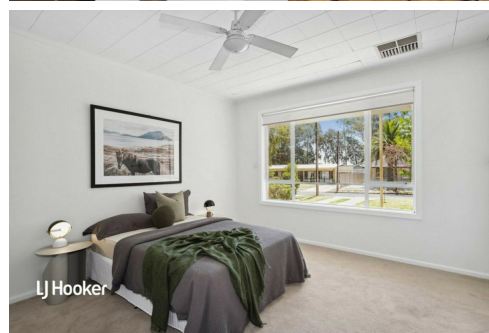
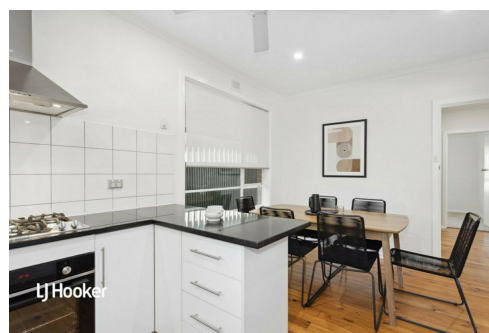
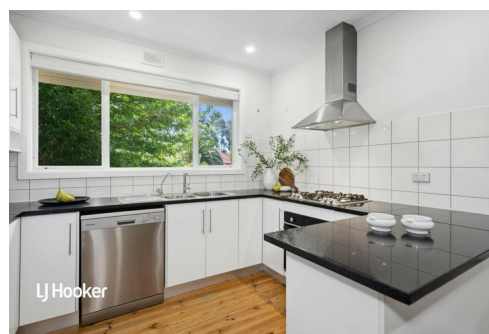
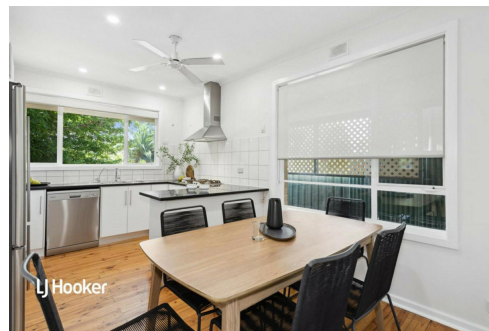
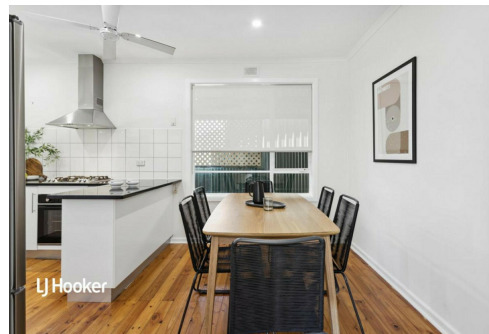
Sales Specialist | donnas@ljhsales.com.au

Shaun Roberts 0435 367 534

Managing Partner | Sales Specialist | shaunr@ljhsales.com.au

LJ Hooker Greenwith | Golden Grove | Mawson Lakes | Modbury (08) 8289 6660

North East, Shop 2, 1007 North East Road, RIDGEHAVEN SA 5097
greenwithgoldengrove.ljhooker.com.au | info@ljhsupport.com.au



Disclaimer: All information contained therein is gathered from relevant third parties sources. We cannot guarantee or give any warranty about the information provided. Interested parties must rely solely on their own enquiries.

LJ Hooker Greenwith | Golden Grove | Mawson Lakes | Modbury (08) 8289 6660



Scale in metres. This drawing is for illustration purposes only. All measurements are approximate and details intended to be relied upon should be independently verified.

Produced by The Fotobase Group



LJ Hooker Greenwith | Golden Grove | Mawson Lakes | Modbury
(08) 8289 6660

Disclaimer: All information contained therein is gathered from relevant third parties sources. We cannot guarantee or give any warranty about the information provided. Interested parties must rely solely on their own enquiries.