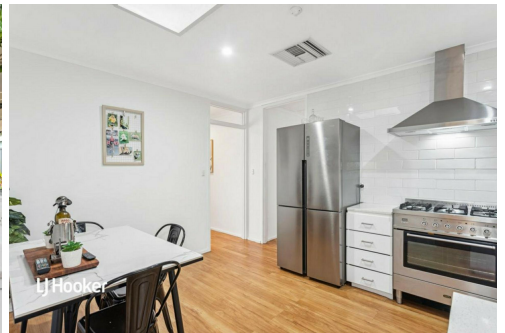
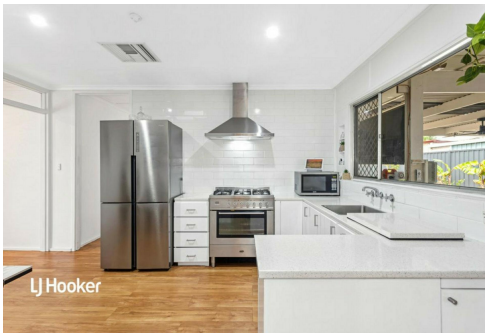
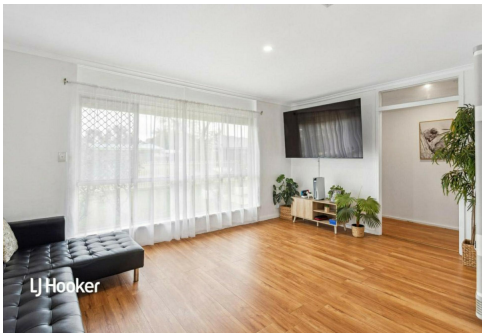




**SOLD**

LJ Hooker



## Salisbury East, 10 Prince Street

Discover the Potential

3 1 1

Auction Location: Onsite

This home has been lovingly maintained by its original owner since it was built in 1970, reflecting decades of care and attention. Thoughtful updates have been made over the years to enhance comfort and functionality, all while preserving its timeless charm. With just one long-term owner, every detail has been meticulously looked after, ensuring the home is in excellent condition. Now, for the first time on the market, this well-loved property presents a rare opportunity for the next owners to create their own lasting memories in a home that has truly stood the test of time.

Offering three-bedroom, the master bedroom features a built-in robe, split system air conditioning and roller shutters for added privacy. With evaporative cooling and gas heating, the home ensures year-round comfort. The updated bathroom and kitchen provide a fresh, contemporary feel, making this home move-in ready. Ideal for families or investors,

**For Sale**

Auction (\$639,000)

**View**

[ljhooker.com.au/2AS7GJU](http://ljhooker.com.au/2AS7GJU)

**Contact**

**Donna Staines**

0456 844 103

[donnas@ljhsales.com.au](mailto:donnas@ljhsales.com.au)



**LJ Hooker Greenwith | Golden Grove  
| Mawson Lakes | Modbury  
(08) 8289 6660**

**Disclaimer:** All information contained therein is gathered from relevant third parties sources.

We cannot guarantee or give any warranty about the information provided. Interested parties must rely solely on their own enquiries.

this property combines practicality with style, offering a comfortable and well-maintained space to call home.

Features you'll love:

- \* Three generous sized bedrooms
- \* Gas cooktop with 900wide oven
- \* Solar panels
- \* Down lights throughout
- \* Electric panel door
- \* Security cameras
- \* Outdoor entertaining

This property offers convenient drive-through access to a spacious workshop/shed, presenting endless possibilities for use. Whether you're a DIY enthusiast, a car collector, or simply need extra storage space, this versatile area can be customized to suit your needs. The seamless access from the driveway makes it ideal for parking additional vehicles, setting up a home workshop, or even creating the ultimate hobby space. With so much potential, this feature adds significant value and functionality to the property, making it a standout choice for those seeking extra room to work and play.

Salisbury East is a thriving suburb known for its family friendly atmosphere, excellent schools and convenient amenities. You'll be within walking distance and easy reach to Northbri shops, parks and public transport. Discover the ultimate blend of convenience and natural beauty in Salisbury East, where this inviting home awaits with a park and reserve just moments away.

Situated on a generous sized allotment this home is perfect for a first home buyer, families, downsizers or investor. Don't miss the opportunity to secure this one.

All information provided has been obtained from sources we believe to be accurate, however, we cannot guarantee the information is accurate and we accept no liability for any errors or omissions (including but not limited to a property's land size, floor plans and size, building age and condition). Interested parties should make their own enquiries and obtain their own legal and financial advice. Should this property be scheduled for auction, the Vendor's Statement may be inspected at either of our two LJ Hooker Property Specialists Real Estate offices for 3 consecutive business days immediately preceding the auction and at the auction for 30 minutes before it starts.

RLA 208516



**Disclaimer:** All information contained therein is gathered from relevant third parties sources. We cannot guarantee or give any warranty about the information provided. Interested parties must rely solely on their own enquiries.

**LJ Hooker Greenwith | Golden Grove  
| Mawson Lakes | Modbury  
(08) 8289 6660**

## More About this Property

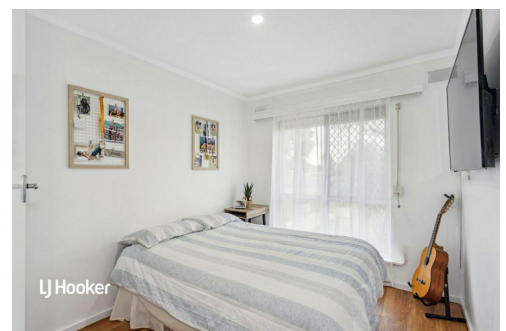
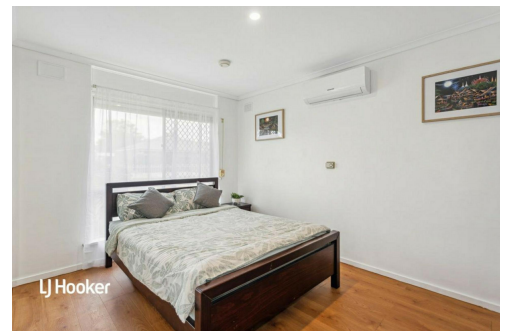
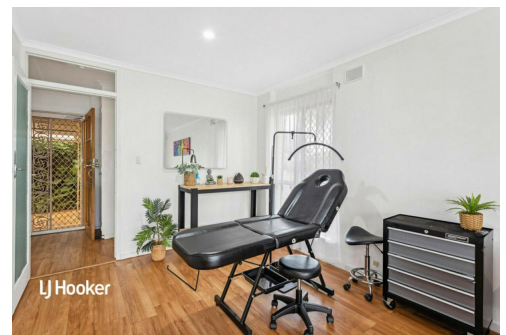
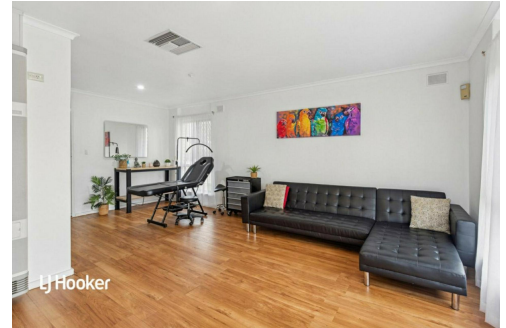
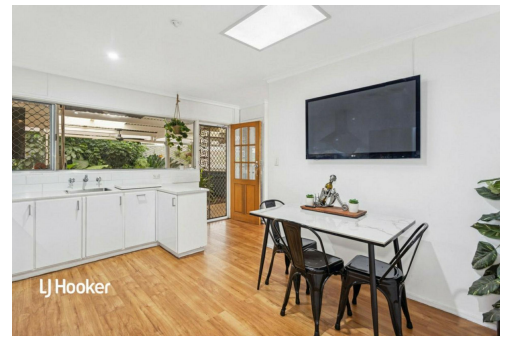
|               |                    |
|---------------|--------------------|
| Property ID   | 2AS7GJU            |
| Property Type | House              |
| House Size    | 104 m <sup>2</sup> |
| Land Area     | 690 m <sup>2</sup> |

**Donna Staines 0456 844 103**

Sales Specialist | [donnas@ljhsales.com.au](mailto:donnas@ljhsales.com.au)

**LJ Hooker Greenwith | Golden Grove | Mawson Lakes | Modbury (08) 8289 6660**

North East, Shop 2, 1007 North East Road, RIDGEHAVEN SA 5097  
[greenwithgoldengrove.ljhooker.com.au](http://greenwithgoldengrove.ljhooker.com.au) | [info@ljhsupport.com.au](mailto:info@ljhsupport.com.au)



**Disclaimer:** All information contained therein is gathered from relevant third parties sources.

We cannot guarantee or give any warranty about the information provided. Interested parties must rely solely on their own enquiries.

**LJ Hooker Greenwith | Golden Grove  
| Mawson Lakes | Modbury  
(08) 8289 6660**



Scale in metres. This drawing is for illustration purposes only. All measurements are approximate and details intended to be relied upon should be independently verified.

Produced by **The Fotobase Group**



**LJ Hooker Greenwith | Golden Grove  
| Mawson Lakes | Modbury  
(08) 8289 6660**

**Disclaimer:** All information contained therein is gathered from relevant third parties sources. We cannot guarantee or give any warranty about the information provided. Interested parties must rely solely on their own enquiries.