

## Saint Kilda, 36 Marlow Street Units 1-8

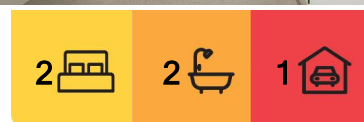
### Limited Release - 8 New Townhouses Underway

Welcome to Your New Beginning

Discover a boutique development of 8 thoughtfully designed townhouses, each offering two bedrooms, two bathrooms, and an allocated car park. With open-plan living and kitchen spaces flowing effortlessly into your own private courtyard, these homes are crafted for comfort, connection, and contemporary living.

Each townhouse boasts a light-filled, open-plan kitchen and living area that flows seamlessly to a private courtyard, perfect for relaxing, entertaining, or simply enjoying your own outdoor retreat.

Building is already underway, with completion expected by late 2025. Now is the perfect time to secure your new home early and prepare for a fresh start in a beautifully crafted, modern townhouse.



**For Sale**  
\$639,000

**View**  
By Appointment

**Contact**  
**Reagan Curline**  
0278464545  
reagan@ljhdunedin.co.nz

**Lawrence Schaumann**  
027 418 6204  
lawrence@ljhdunedin.co.nz



**Disclaimer:** All information contained therein is gathered from relevant third parties sources. We cannot guarantee or give any warranty about the information provided. Interested parties must rely solely on their own enquiries.

**LJ Hooker Dunedin**  
**(03) 470 1370**  
Wayne Graham Realty Ltd



These townhouses offer exceptional versatility, ideal as your forever home, town base, short-term or a long-term rental investment. Whether you're an owner-occupier, investor, or someone seeking a flexible coastal base, this is an opportunity that works for you.

Nestled in the vibrant coastal suburb of St Kilda, you'll enjoy the perfect balance of beachside charm and urban convenience. Stroll to local cafés, parks, and schools, or take a short 10-minute drive to the city centre. With stunning beaches and a tight-knit community feel, this location is ideal for families, professionals, and downsizers alike.

Brought to you by EWI Developments, a trusted name in medium-density housing since 2017. With over 150 quality homes delivered across the South Island--including Christchurch, Dunedin, Nelson/Tasman, Marlborough, and Invercargill, EWI is known for their commitment to smart design and solid craftsmanship.

Whether you're looking to invest, host, or call it home, this development offers a rare chance to be part of something special. Secure your spot today and look forward to a relaxed, modern lifestyle just moments from the coast.

Contact us now for a full information memorandum and to register your interest.

## More About this Property

Property ID	3PWEGDS
Property Type	House
Licensed Real Estate Agents (REAA2008)	

**Reagan Curline 0278464545**

Licensee | reagan@ljhdunedin.co.nz

**Lawrence Schaumann 027 418 6204**

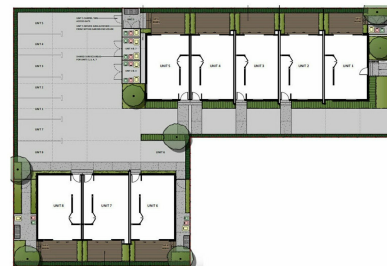
Licensee | lawrence@ljhdunedin.co.nz

**LJ Hooker Dunedin (03) 470 1370**

Wayne Graham Realty Ltd

63 Musselburgh Rise, DUNEDIN 9013

dunedin.ljhooker.co.nz | dunedin@ljhdunedin.co.nz



Configurations

Landscaping Plan



Ground Floor



First Floor

Configurations

Floor Plans - Block A - Units 1-5



**Disclaimer:** All information contained therein is gathered from relevant third parties sources. We cannot guarantee or give any warranty about the information provided. Interested parties must rely solely on their own enquiries.

**LJ Hooker Dunedin**

**(03) 470 1370**

Wayne Graham Realty Ltd