



Saint Clair, 34 Allandale Road

Panoramic Views, Prime Location

Solid character meets everyday comfort in this well-located St Clair home, offering stunning views of the sea, White Island, and down to Lawyers Head. Positioned close to local amenities and zoned for St Clair School, this property combines convenience with lifestyle.

Inside, original features like leadlight windows, ornate ceilings, a rimu staircase, and wood-panelled hallway highlight the home's craftsmanship. These classic details are paired with modern comforts for practical, everyday living.

The rear section includes a glasshouse and established fruit trees--perfect for those looking to enjoy a bit of homegrown produce.

A spacious double garage offers secure parking, with additional off-street space for two more vehicles.

This is a rare chance to secure a character home in a tightly held area. Contact us today to arrange a viewing.

4

1

2

For Sale

Enquiries Over \$749,000

View

Mon 2nd Jun @ 12:30PM - 1:00PM

Contact

Trista Townsend

021 484 221

Trista@ljhdunedin.co.nz



Disclaimer: All information contained therein is gathered from relevant third parties sources. We cannot guarantee or give any warranty about the information provided. Interested parties must rely solely on their own enquiries.

LJ Hooker Dunedin

(03) 470 1370

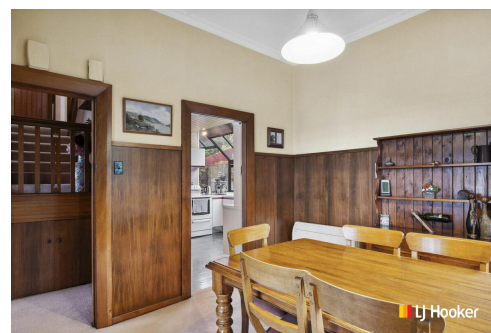
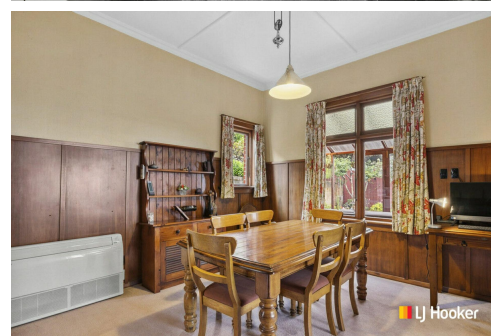
Wayne Graham Realty Ltd

More About this Property

Property ID	3PQZGDS
Property Type	House
Land Area	832 m2
Licensed Real Estate Agents (REAA2008)	

Trista Townsend 021 484 221
Licensee | Trista@ljhdunedin.co.nz

LJ Hooker Dunedin (03) 470 1370
Wayne Graham Realty Ltd
63 Musselburgh Rise, DUNEDIN 9013
dunedin.ljhooker.co.nz | dunedin@ljhdunedin.co.nz



Disclaimer: All information contained therein is gathered from relevant third parties sources.
We cannot guarantee or give any warranty about the information provided. Interested parties must rely solely on their own enquiries.

LJ Hooker Dunedin
(03) 470 1370
Wayne Graham Realty Ltd