



## Saint Andrews, 14 Waimate Highway

### A Family Home with Room for All to Grow

This property is located in the heart of St Andrews, set on a generous 1,540m2 section. This home is ideal for families, hobbyists, or anyone seeking a versatile living space with plenty of room to grow.

With well-maintained grounds. The property includes a single garage/workshop, perfect for DIY projects or extra storage. A large hobby room/office, offering flexibility for those who work from home or need creative space. But that's not all - there's also a separate portable building, all with power, providing even more potential for a home office, studio, or games room.

The home features three spacious bedrooms and an open-plan living and dining area, the kitchen is separate adjacent to the dining area. The bathroom features a spa bath, the toilet is separate. Additional features include a sunroom and a conservatory. And only a 17-minute drive to Timaru.

3

1

2

**For Sale**

Enquiries Over \$425,000

**View**

By Appointment

**Contact**

**Elaine Homer**

021 02393111

ehomer.waimate@ljjhooker.co.nz



**Disclaimer:** All information contained therein is gathered from relevant third parties sources.

We cannot guarantee or give any warranty about the information provided. Interested parties must rely solely on their own enquiries.

**LJ Hooker Waimate**

**(03) 689 7974**

Enting Real Estate Limited

**Disclaimer:**

This information has been supplied by the owners and Corelogic. LJ Hooker Timaru, Geraldine and Waimate are merely passing over this information as supplied to us. We cannot guarantee its accuracy and reliability as we have not checked, audited or reviewed the information. All intending purchasers are advised to conduct their own due diligence investigation into this information. To the maximum extent permitted by law, we do not accept any responsibility to any part for the accuracy or use of the information herein. Enting Real Estate Limited Licensed (REAA 2008).

## More About this Property

<b>Property ID</b>	806GNG
<b>Property Type</b>	House
<b>House Size</b>	120 m2
<b>Land Area</b>	1540 m2
<b>Licensed Real Estate Agents (REAA2008)</b>	

**Elaine Homer 021 02393111**

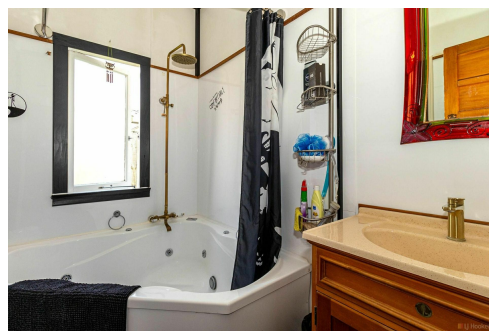
Property Consultant | [ehomer.waimate@ljhooker.co.nz](mailto:ehomer.waimate@ljhooker.co.nz)

**LJ Hooker Waimate (03) 689 7974**

Enting Real Estate Limited

74 Queen Street, WAIMATE 7924

[waimate.ljhooker.co.nz](mailto:waimate.ljhooker.co.nz) | [Waimate@ljhooker.co.nz](mailto:Waimate@ljhooker.co.nz)



**Disclaimer:** All information contained therein is gathered from relevant third parties sources.

We cannot guarantee or give any warranty about the information provided. Interested parties must rely solely on their own enquiries.

**LJ Hooker Waimate**

**(03) 689 7974**

Enting Real Estate Limited