



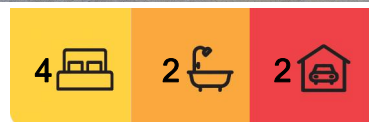
Rutherford, 41 Clayton Crescent

Quality Family Home with Great Entertainer!

Set across a single level, this brick and tile residence is located in the ever popular suburb of Rutherford amongst established homes close to schools, shops & transport- ensuring this home is one well suited to all buying groups!

The home offers four well-appointed bedrooms, each carpeted and fitted with in built-in wardrobes. The master suite elevates the experience with a walk-in wardrobe and an ensuite.

Living options include a front lounge, and an open plan design at the rear ensures that there's plenty of room to entertain guests or enjoy quality time with loved ones, while the connectivity to the awesome undercover alfresco is an absolute standout & a great space to kick back on the weekends to chillout or in the summer, entertaining the balmy nights away.



For Sale
\$730,000

View
l.jhooker.com.au/1DF1F6H

Contact
Todd Fisher
0438 592 920
tfisher.maitland@l.jhooker.com.au
Ben Cotton
0434 638 822
bcotton.maitland@l.jhooker.com.au



Disclaimer: All information contained therein is gathered from relevant third parties sources. We cannot guarantee or give any warranty about the information provided. Interested parties must rely solely on their own enquiries.

LJ Hooker Maitland
(02) 4933 5511

Other notable features include;

- large kitchen with stainless steel appliances & prep bench space
- Versatile floorplan for relaxed living
- Walk-in robe and ensuite to master bedroom
- Air conditioning
- Attached double garage with drive through access
- North facing rear yard
- Awesome undercover alfresco

Proudly marketed by LJ Hooker Maitland, please call exclusive agents Todd Fisher 0438 592 920 or Ben Cotton 0434 638 822 - 7 days for all inspections & further information.

All information contained herein is gathered from sources we deem to be reliable. However, we cannot guarantee its accuracy and interested persons should rely on their own enquiries.

More About this Property

Property ID	1DF1F6H
Property Type	House
Land Area	634 m ²
Including	Ensuite Air Conditioning Built-in-Robes Close to Schools Close to Shops Close to Transport

Todd Fisher 0438 592 920

Principal/Licensee in Charge | tfisher.maitland@ljhooker.com.au

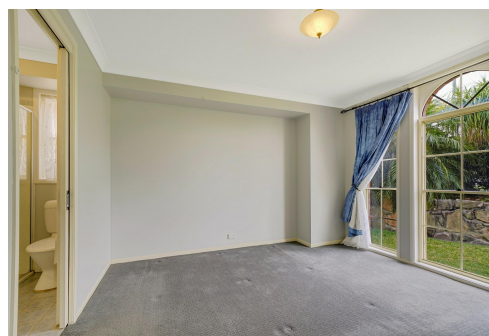
Ben Cotton 0434 638 822

Licensed Real Estate Agent & Auctioneer | bcotton.maitland@ljhooker.com.au

LJ Hooker Maitland (02) 4933 5511

24 Ken Tubman Drive, MAITLAND NSW 2320

maitland.ljhooker.com.au | maitland@ljhooker.com.au



Disclaimer: All information contained therein is gathered from relevant third parties sources. We cannot guarantee or give any warranty about the information provided. Interested parties must rely solely on their own enquiries.

LJ Hooker Maitland
(02) 4933 5511



41 Clayton Cr, Rutherford

All information contained herein is gathered from sources we deem reliable. However, we cannot guarantee its accuracy and act as a messenger only in passing on the details. Interested parties should rely on their own inquiries and the contract for sale. The floor plans are artist's impressions only. The site plan is not to scale.

LJ Hooker
Maitland

LJ Hooker

LJ Hooker Maitland
(02) 4933 5511

Disclaimer: All information contained therein is gathered from relevant third parties sources. We cannot guarantee or give any warranty about the information provided. Interested parties must rely solely on their own enquiries.