



Rutherford, 28 Weblands Street

Leave the car at home - we mean it!

Nestled in an incredibly convenient location, this property offers you easy access to literally everything you need for convenient living - only a short walk from three supermarkets, a variety of convenience shops, schools & public transport, PLUS lifestyle amenities, your daily needs are effortlessly met.

The property itself is a walk up start for first home buyers, downsizers & investors alike. Internally the home offers 3 comfortable bedrooms, 1 sleekly renovated bathroom & a kitchen complete with all the mod cons to keep the home masterchef happy! Timber floor flows throughout the vast majority of the home, which creates a lovely sense of warmth against the neutral colour scheme.

Externally the yard is low maintenance, and an undercover timber deck overlooks the green space on offer. Parking is on offer by the way of double carport & side access there to get the toys off the street, and a lawn locker there for the essentials.



For Sale
\$600,000

View
ljhooker.com.au/1DUHF6H

Contact
Ben Cotton
0434 638 822
bcotton.maitland@ljhooker.com.au



LJ Hooker Maitland
(02) 4933 5511

Disclaimer: All information contained therein is gathered from relevant third parties sources. We cannot guarantee or give any warranty about the information provided. Interested parties must rely solely on their own enquiries.

Proudly marketed by LJ Hooker Maitland, please call exclusive agent Ben Cotton 0434 638 822 - 7 days for all inspections & further information.

All information contained herein is gathered from sources we deem to be reliable. However, we cannot guarantee its accuracy and interested persons should rely on their own enquiries.

More About this Property

Property ID	1DUHF6H
Property Type	House
Land Area	505 m2
Including	Air Conditioning Toilets (2) Built-in-Robes Car Parking - Surface Close to Schools Close to Shops Close to Transport

Ben Cotton 0434 638 822
Licensed Real Estate Agent & Auctioneer | bcotton.maitland@ljhooker.com.au

LJ Hooker Maitland (02) 4933 5511
24 Ken Tubman Drive, MAITLAND NSW 2320
maitland.ljhooker.com.au | maitland@ljhooker.com.au

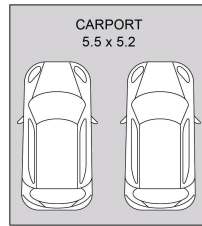


LJ Hooker Maitland
(02) 4933 5511

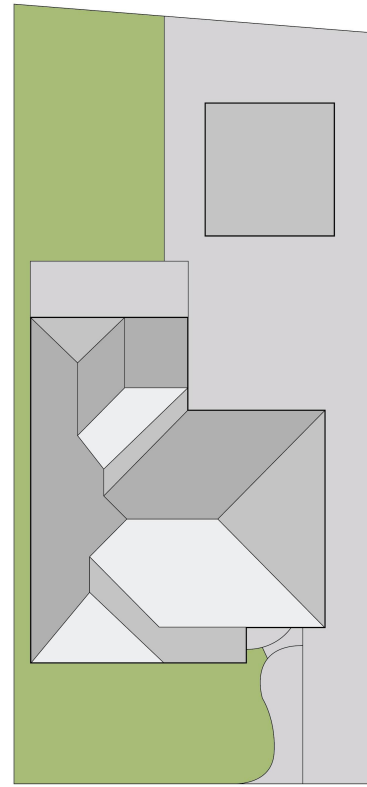
Disclaimer: All information contained therein is gathered from relevant third parties sources. We cannot guarantee or give any warranty about the information provided. Interested parties must rely solely on their own enquiries.



FLOOR PLAN



(NOT IN POSITION)



SITE PLAN



28 Weblands Street
Rutherford

DISCLAIMER: Plans shown are for presentation purposes only and not part of any legal document or title. They are subject to errors, omissions, inaccuracies and should not be used as a sole and accurate reference. Interested parties should make their own inquiries using independent sources.

LJ Hooker
Maitland

LJ Hooker

LJ Hooker Maitland
(02) 4933 5511

Disclaimer: All information contained therein is gathered from relevant third parties sources. We cannot guarantee or give any warranty about the information provided. Interested parties must rely solely on their own enquiries.