

25 Thompson Street, Rutherford


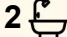

Well Rounded Home in Awesome Location!

Positioned in an awesome pocket of Rutherford, 25 Thompson Street presents an outstanding opportunity for those seeking a move-in ready home with plenty of lifestyle appeal. Just a short stroll to Rutherford Shopping Centre, Maitland City Bowling Club, local schooling and public transport options, the location alone makes this property incredibly easy to fall in love with.

Freshly updated throughout, the home has been repainted, recarpeted and enhanced with upgraded lighting, creating a bright and inviting feel from the moment you step inside, with an immaculate exterior setting the tone.

Offering three well-proportioned bedrooms, the layout is both functional and family-friendly, with the master bedroom privately positioned at the rear and complete with its own ensuite. Two separate living areas provide flexibility for growing families or those who simply enjoy a little extra space to spread out, and air conditioning ensures year-round comfort.

Stepping outside, the home continues to impress with a generous undercover entertaining area that overlooks the secure backyard-

3  2  1 

FOR SALE
\$800,000

AGENTS

Ben Cotton
0434 638 822
bcotton.maitland@ljhooker.com.au

AGENCY

LJ Hooker Maitland
(02) 4933 5511

All information contained therein is gathered from relevant third parties sources.
We cannot guarantee or give any warranty about the information provided.
Interested parties must rely solely on their own enquiries.

 **LJ Hooker**

perfect for weekend BBQs, kids at play or pets roaming freely. It's a space that invites you to slow down and enjoy, whether it's a quiet morning coffee or hosting your nearest & dearest.

A well-rounded home in a location that truly delivers on convenience, this is an opportunity not to be missed in a consistently popular part of Rutherford.

Other notable inclusions: Hardwired CCTV system, solar system & stainless steel appliances.

Proudly marketed by LJ Hooker Maitland, please call exclusive agent Ben Cotton 0434 638 822 - 7 days for all inspections & further information.

All information contained herein is gathered from sources we deem to be reliable. However, we cannot guarantee its accuracy and interested persons should rely on their own enquiries.

MORE DETAILS

Property ID	1EZWF6H
Property Type	House
Land Area	556.4 m2
Including	Ensuite
	Air Conditioning
	Toilets (2)
	Built-in-Robes
	Close to Schools
	Close to Shops
	Close to Transport

Ben Cotton 0434 638 822

Licensed Real Estate Agent & Auctioneer |
bcotton.maitland@ljhooker.com.au

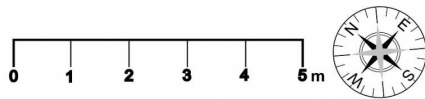
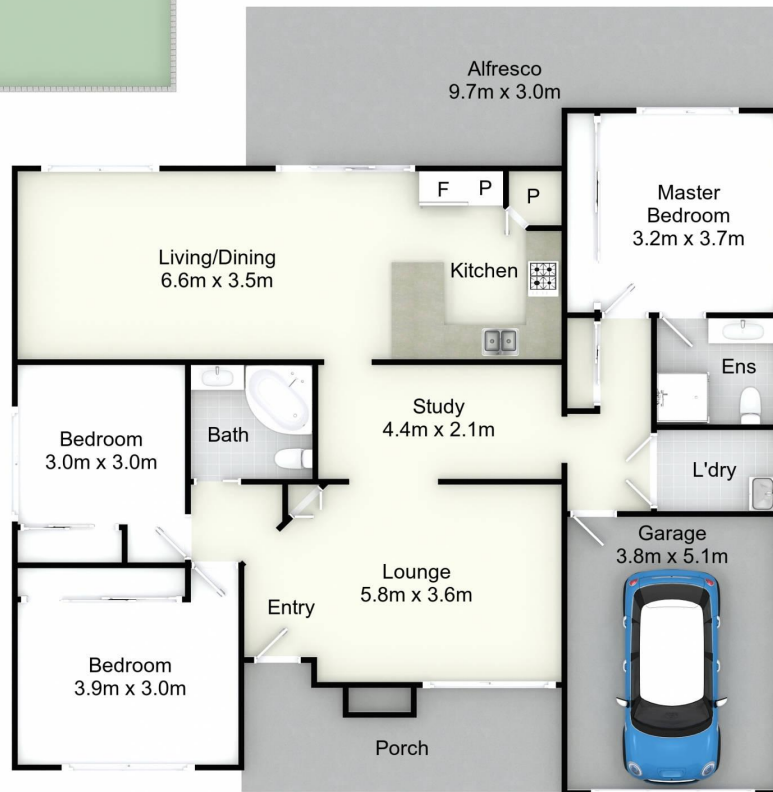
LJ Hooker Maitland (02) 4933 5511

24 Ken Tubman Drive, MAITLAND NSW 2320
maitland.ljhooker.com.au | maitland@ljhooker.com.au





Site Plan
(Not to Scale)



25 Thompson St, Rutherford

All information contained herein is gathered from sources we deem reliable. However, we cannot guarantee its accuracy and act as a messenger only in passing on the details. Interested parties should rely on their own inquiries and the contract for sale. The floor plans are artist's impressions only. The site plan is not to scale.

 **LJ Hooker**
Maitland

All information contained therein is gathered from relevant third parties sources. We cannot guarantee or give any warranty about the information provided. Interested parties must rely solely on their own enquiries.

 **LJ Hooker**