



Rutherford, 23 Thompson Street

Close to All of the Action!

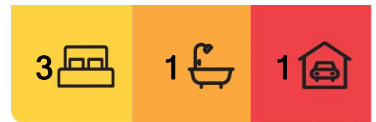
Showcasing an attractive facade with a deep verandah, and with the added bonus of side access it's easy to see yourself be drawn in from the onset with this fantastic Rutherford home!

Internally this home has seen plenty of TLC over the years, and that leaves you the next lucky owner near nothing more to do than kick up the feet & know that you've made it home! On entry, you arrive into a large living space, that is complete with a combustion fire place, just perfect for the winter movie nights. This area laps around to a well-planned out open meals & kitchen area. The kitchen is a great space, with large island benchtop for prep & a breakfast bar for early morning starts.

Two of the three bedrooms have built in robes, with the main bedroom large



Disclaimer: All information contained therein is gathered from relevant third parties sources. We cannot guarantee or give any warranty about the information provided. Interested parties must rely solely on their own enquiries.



For Sale
\$592,500

View
ljhooker.com.au/1CZQF6H

Contact
Ben Cotton
0434 638 822
bcotton.maitland@ljhooker.com.au

LJ Hooker Maitland
(02) 4933 5511

enough to cater to a king bed, and for increased functionality, the bathroom is central to the sleeping arrangements.

Attached to the rear & accessible off the kitchen is a wonderful outdoor entertaining area, perfect for unwinding after a long day or for firing up the BBQ & entertaining! Externally the yard is fully fenced, making it a safe space for the kids or fur babies to enjoy - and just about perfect blank canvas that offers plenty of opportunity for those looking to put up a large shed or pool to enjoy in the summer months ahead (STCA). Side access is of course on offer, allowing you to get the toys safely off the street. Recently solar has been installed to help beat away the cost of living, along with a brand-new heat pump HWS.

The location on offer is second to none, being super quiet & a short walk has you at the doorstep of 3 shopping centres, bowling club, public transport options & schooling/daycare options. With this in mind, we see this home just perfect for FHB's & investors looking for growing areas close to "all the action".

Proudly marketed by LJ Hooker Maitland, please call exclusive agent Ben Cotton 0434 638 822 - 7 days for all inspections & further information.

All information contained herein is gathered from sources we deem to be reliable. However, we cannot guarantee its accuracy and interested persons should rely on their own enquiries.

More About this Property

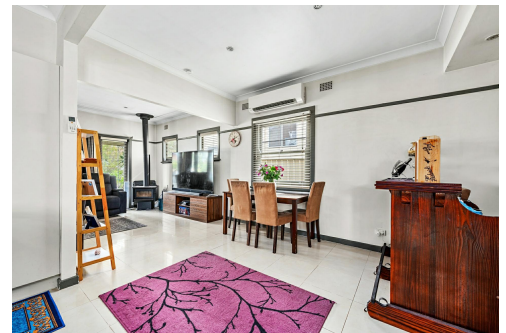
Property ID	1CZQF6H
Property Type	House
Land Area	567 m ²
Including	Air Conditioning Toilets (2) Built-in-Robes Close to Schools Close to Shops Close to Transport Heating

Ben Cotton 0434 638 822

Licensed Real Estate Agent & Auctioneer |
bcotton.maitland@ljhooker.com.au

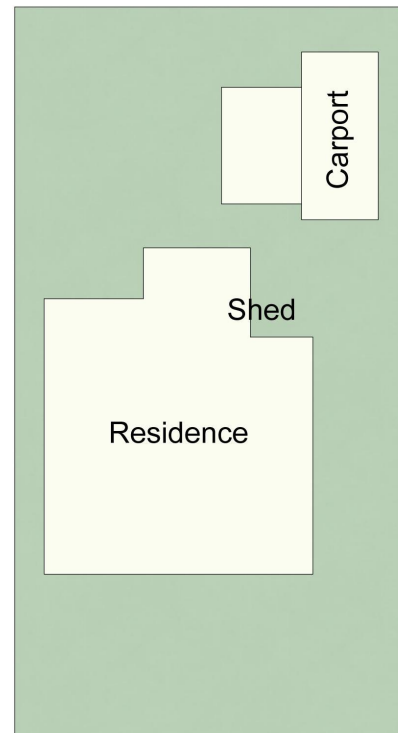
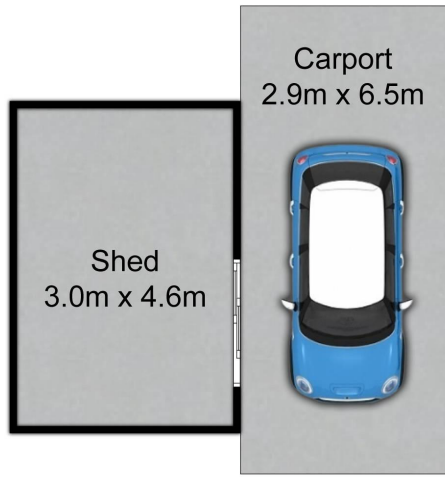
LJ Hooker Maitland (02) 4933 5511

24 Ken Tubman Drive, MAITLAND NSW 2320
maitland.ljhooker.com.au | maitland@ljhooker.com.au

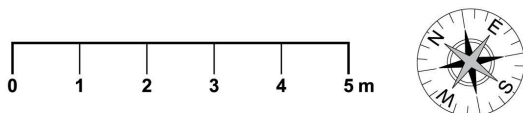


LJ Hooker Maitland
(02) 4933 5511

Disclaimer: All information contained therein is gathered from relevant third parties sources. We cannot guarantee or give any warranty about the information provided. Interested parties must rely solely on their own enquiries.



Site Plan
Not To Scale



23 Thompson St, Rutherford

All information contained herein is gathered from sources we deem reliable. However, we cannot guarantee its accuracy and act as a messenger only in passing on the details. Interested parties should rely on their own inquiries and the contract for sale. The floor plans are artist's impressions only. The site plan is not to scale.



Maitland

LJ Hooker Maitland

(02) 4933 5511

Disclaimer: All information contained therein is gathered from relevant third parties sources. We cannot guarantee or give any warranty about the information provided. Interested parties must rely solely on their own enquiries.

