






13 Hepburn Close, Rutherford

SOLD OFF MARKET!

Another investment sold off market through our internal investor database!

Proudly marketed by LJ Hooker Maitland, please call exclusive agents Todd Fisher 0438 592 920 or Ben Cotton 0434 638 822 - 7 days for all inspections & further information.

All information contained herein is gathered from sources we deem to be reliable. However, we cannot guarantee its accuracy and interested persons should rely on their own enquiries.

4  2  2 

FOR SALE
\$795,000

AGENTS

Todd Fisher
0438 592 920
tfisher.maitland@ljhooker.com.au

Ben Cotton
0434 638 822
bcotton.maitland@ljhooker.com.au

AGENCY

LJ Hooker Maitland
(02) 4933 5511

All information contained therein is gathered from relevant third parties sources.
We cannot guarantee or give any warranty about the information provided.
Interested parties must rely solely on their own enquiries.



MORE DETAILS

Property ID 1F2MF6H
Property Type House
Land Area 630 m2
Including Ensuite
Air Conditioning
Toilets (2)
Built-in-Robes
Close to Schools
Close to Shops
Close to Transport

Todd Fisher 0438 592 920

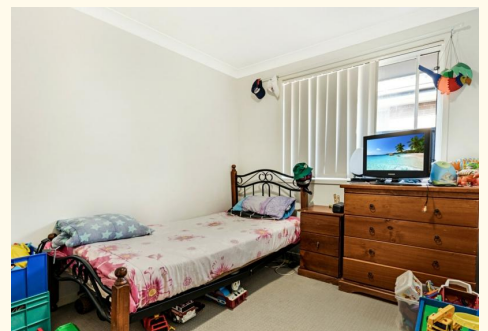
Principal/Licensee in Charge | tfisher.maitland@ljhooker.com.au

Ben Cotton 0434 638 822

Licensed Real Estate Agent & Auctioneer |
bcotton.maitland@ljhooker.com.au

LJ Hooker Maitland (02) 4933 5511

24 Ken Tubman Drive, MAITLAND NSW 2320
maitland.ljhooker.com.au | maitland@ljhooker.com.au



13 Hepburn CI Rutherford

Approximate Gross Internal Area = 171.9 sq m / 1850 sq ft
(Including Garage)



Illustration for identification purposes only, measurements are approximate, not to scale. floorplansUsketch.com © (ID547491)