



Rutherford, 1 Belmar Street

NEAT BRICK & TILE IN GREAT LOCATION!!

Located in the ever-popular suburb of Rutherford this well-presented brick and tile home offers an exceptional opportunity for first home buyers, downsizers or investors alike.

Set on a low-maintenance block and only minutes to Rutherford Shopping Centre, local schools, transport links, and the nearby bulky goods and industrial precinct, the convenience here is unbeatable.

Step inside to discover an open plan layout featuring a large open-plan lounge and dining area, flowing into a tidy laminate kitchen with generous bench and cupboard space —ideal for everyday living. While the home shows touches of its era, it's been well cared for and is move-in ready.

Three well-proportioned bedrooms are smartly positioned away from the main living areas and are serviced by a central bathroom offering both shower and separate bath for



For Sale
\$605,000

View
ljhooker.com.au/1E30F6H

Contact
Kane Bradley
0423 525 335
kbradley.maitland@ljhooker.com.au



Disclaimer: All information contained therein is gathered from relevant third parties sources. We cannot guarantee or give any warranty about the information provided. Interested parties must rely solely on their own enquiries.

LJ Hooker Maitland
(02) 4933 5511

flexibility.

Outside, enjoy a private, fully fenced backyard perfect for pets or pottering, with handy side access from the second street frontage and a garden shed for all your tools and equipment. The single lock-up garage adds security and storage.

Whether you're starting out, slowing down, or looking to add to your investment portfolio, this one ticks all the boxes —location, condition, and potential.

Proudly marketed by LJ Hooker Maitland, please call exclusive agent Kane Bradley 0423 525 335 7 days for all inspections & further information.

All information contained herein is gathered from sources we deem to be reliable. However, we cannot guarantee its accuracy and interested persons should rely on their own enquiries.

More About this Property

Property ID	1E30F6H
Property Type	House
Land Area	361 m2

Kane Bradley 0423 525 335

Director | kbradley.maitland@ljhooker.com.au

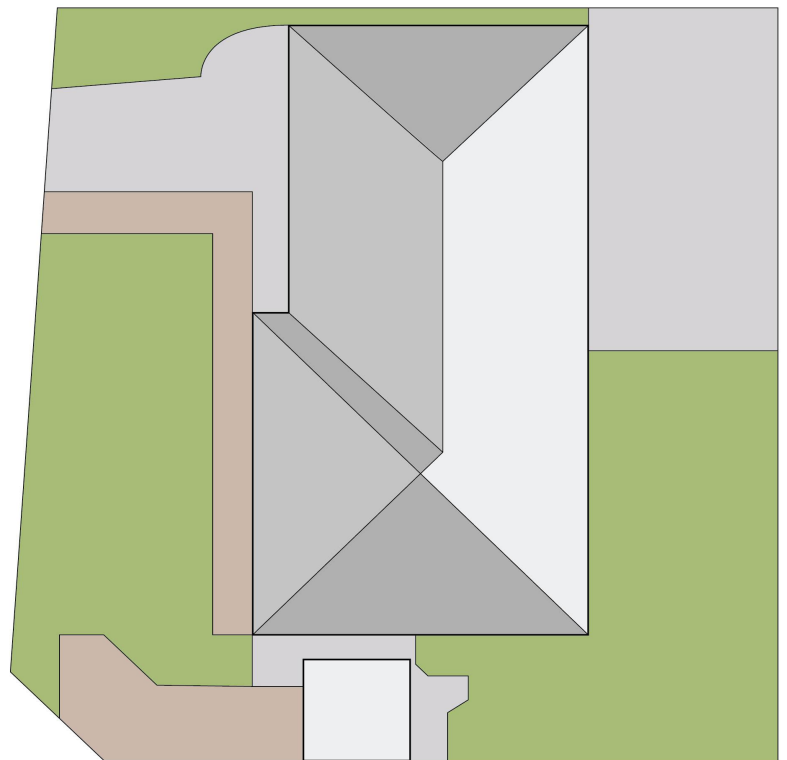
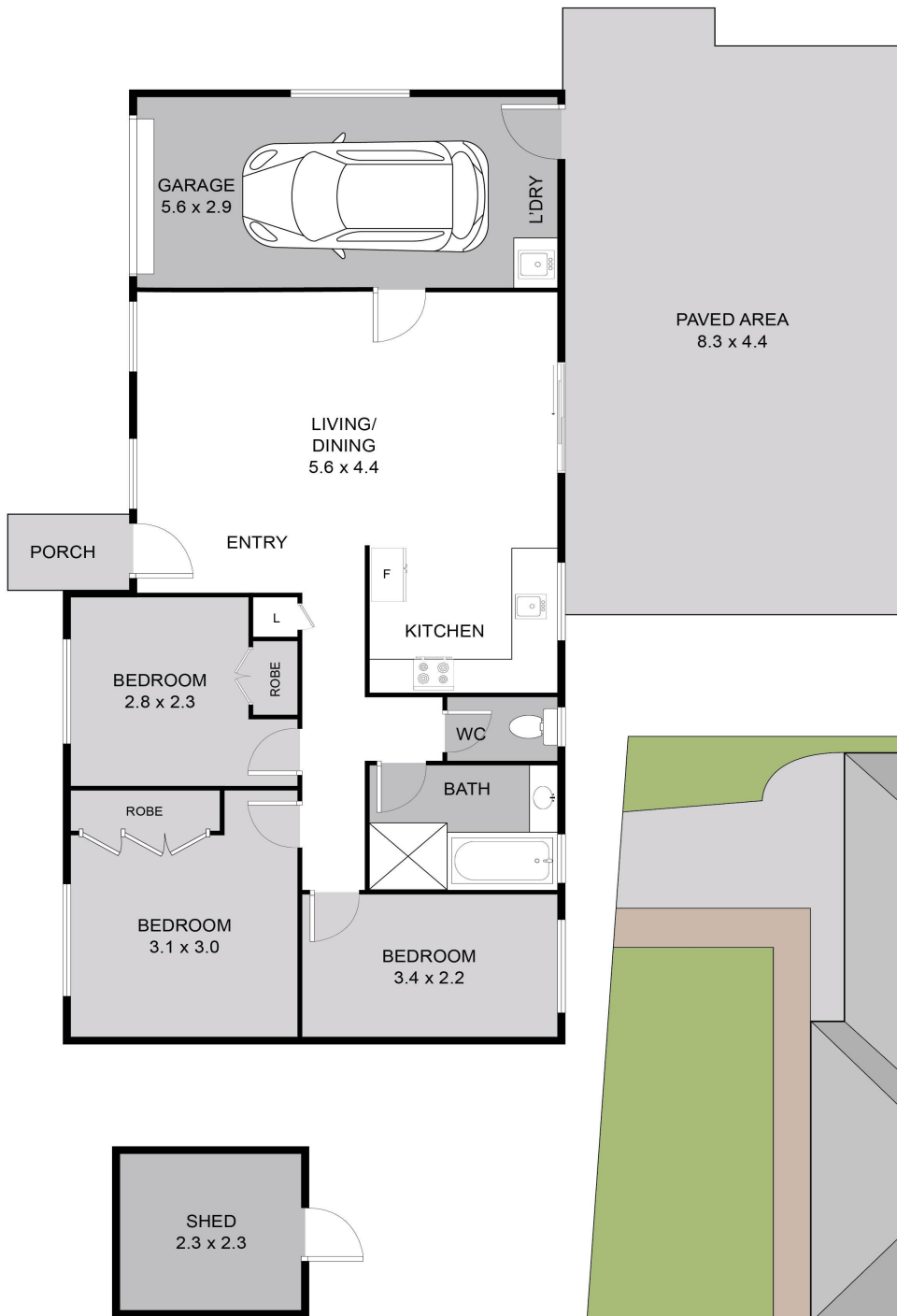
LJ Hooker Maitland (02) 4933 5511

24 Ken Tubman Drive, MAITLAND NSW 2320
maitland.ljhooker.com.au | maitland@ljhooker.com.au



Disclaimer: All information contained therein is gathered from relevant third parties sources. We cannot guarantee or give any warranty about the information provided. Interested parties must rely solely on their own enquiries.

LJ Hooker Maitland
(02) 4933 5511



1 Belmar Street, Rutherford

DISCLAIMER: The plans provided are for illustrative purposes only and do not form part of any legal document or title. They may contain errors, omissions, or inaccuracies and should not be relied upon as an exact reference. Interested parties are advised to conduct their own investigations using independent sources. Measurements are rounded to the nearest 100mm.

LJ Hooker
Maitland

LJ Hooker

LJ Hooker Maitland
(02) 4933 5511

Disclaimer: All information contained therein is gathered from relevant third parties sources. We cannot guarantee or give any warranty about the information provided. Interested parties must rely solely on their own enquiries.