



Rutherford, 47 & 47A Ruby Road

A Grade Returns!

Positioned in a prime location, just minutes from major shopping centres, schools, and all the essentials on your investment checklist being met, this modern and stylish Thomas Paul dual-key property boasts high ceilings, ducted air conditioning, and quality finishes, each with its own lockable car space, and well-appointed backyard!

With both internal and external features ticking every box, we're excited to offer you an investment delivering a combined \$950 per week - with growth potential at lease end. Currently there are with two fantastic tenants in place, leaving you peace of mind knowing your property is set for success.

Both residences are immaculately presented and beautifully maintained, complete with all the modern comforts, including downlights, ducted air, stone benchtops, gas cooktops, and top-notch appliances.

5

3

2

For Sale
\$915,000

View
l.jhooker.com.au/1DJAF6H

Contact
Ben Cotton
0434 638 822
bcotton.maitland@l.jhooker.com.au



LJ Hooker Maitland
(02) 4933 5511

Disclaimer: All information contained therein is gathered from relevant third parties sources. We cannot guarantee or give any warranty about the information provided. Interested parties must rely solely on their own enquiries.

Tenancy in mind, this property is conveniently located just a short distance from multiple schools, shops, and transport options, this investment offers incredible appeal.

Proudly marketed by LJ Hooker Maitland, please call exclusive agent Ben Cotton 0434 638 822 - 7 days for all inspections & further information.

All information contained herein is gathered from sources we deem to be reliable. However, we cannot guarantee its accuracy and interested persons should rely on their own enquiries.

More About this Property

Property ID	1DJAF6H
Property Type	DuplexSemi-detached
Land Area	567 m²
Including	Toilets (3)

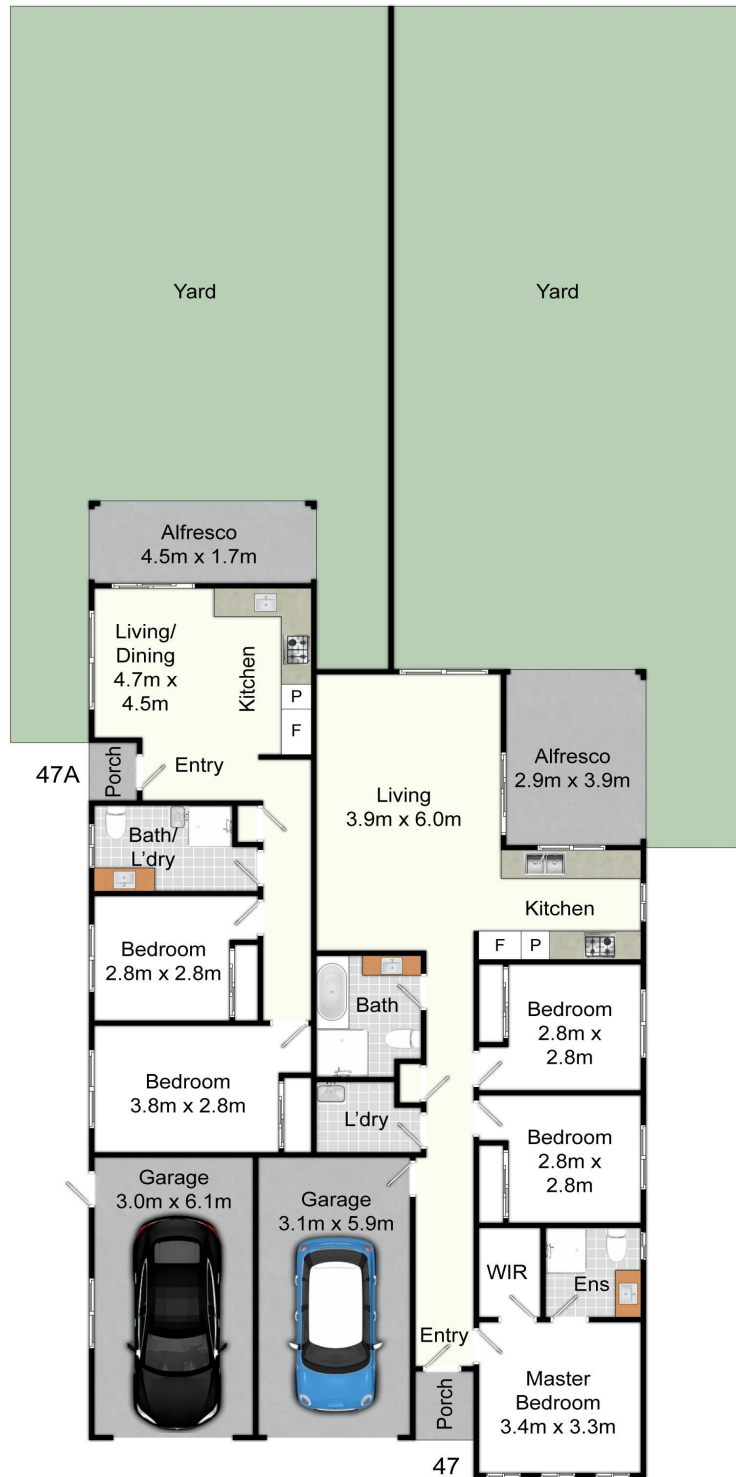
Ben Cotton 0434 638 822
Licensed Real Estate Agent & Auctioneer | bcotton.maitland@ljhooker.com.au

LJ Hooker Maitland (02) 4933 5511
24 Ken Tubman Drive, MAITLAND NSW 2320
maitland.ljhooker.com.au | maitland@ljhooker.com.au



Disclaimer: All information contained therein is gathered from relevant third parties sources. We cannot guarantee or give any warranty about the information provided. Interested parties must rely solely on their own enquiries.

LJ Hooker Maitland
(02) 4933 5511



47 Ruby Rd, Rutherford

All information contained herein is gathered from sources we deem reliable. However, we cannot guarantee its accuracy and act as a messenger only in passing on the details. Interested parties should rely on their own inquiries and the contract for sale. The floor plans are artist's impressions only. The site plan is not to scale.

LJ Hooker
Maitland

LJ Hooker

LJ Hooker Maitland
(02) 4933 5511

Disclaimer: All information contained therein is gathered from relevant third parties sources. We cannot guarantee or give any warranty about the information provided. Interested parties must rely solely on their own enquiries.