



## Russell Island, 99 Wahine Drive

2 Beds + 3: Study : 3 Baths : Oversize Garage

\*\*\*\*\* Buyers please note: this property has been certified as a 1 bedroom property with additional utility rooms that the Owner has set up as bedrooms. Please call if you require clarification regarding the implications of this certification\*\*\*\*\*

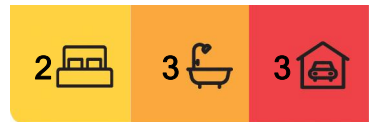
If lifestyle, location and easy deep water access living are what you are looking for, then book an inspection immediately. This amazing waterfront residence will be the hot topic of property conversations on our beautiful island and beyond. If its low tide you still have 2 metres of water to dock at your private jetty. The jetty is shared with the neighbour a

Bring your boat, fishing rods, crab pots, jet ski, kayak or just kick back and relax! This property is currently an Air BNB with continuous bookings but available or 30 day settlement for Owner occupiers. More information available on request.

External features:



**Disclaimer:** All information contained therein is gathered from relevant third parties sources. We cannot guarantee or give any warranty about the information provided. Interested parties must rely solely on their own enquiries.



**For Sale**  
SOLD BY SUE

**View**  
[ljhooker.com.au/BRQ4F2S](http://ljhooker.com.au/BRQ4F2S)

**Contact**  
**Sue Bloomfield**  
0408 789 399  
sbloomfield@pcbi.com.au  
**Donna Pinkerton**  
0400 997 699  
dpinkerton@ljhpropertycentre.com.au

**LJ Hooker Property Centre**  
**(07) 3286 2500**

- \* Shared private jetty
- \* Grassy lawn for the grandies or fur babies to play on
- \* Look out over Stradbroke Island and Canaipa Passage
- \* Ramp to front door from street level.
- \* Large rear deck first floor and rear ground with amazing water views
- \* Solar panels - 5kw
- \* 2 x hot water systems
- \* Drive into garage from street level
- \* Extra storage beside garage

Internal Features:

- \* Open plan living/dining/kitchen
- \* 2 large bedrooms at street level
- \* Air conditioners in bedrooms
- \* Ensuite to master with bath tub
- \* Second bathroom with large walk in shower
- \* Water views from main bedroom
- \* Water views from en suite
- \* Water views from kitchen/dining/living
- \* Ceiling fans throughout
- \* Extra rooms downstairs
- \* Third bathroom downstairs with rails and wheelchair access
- \* Downstairs kitchenette (just needs plumbing)
- \* Living area opens to grassy yard and jetty
- \* Air conditioner in downstairs living area

Don't delay call today!!

Russell Island is part of Redland City, Queensland and the largest of the Southern Moreton Bay Islands. It has a length of 8 kilometers and width of nearly 3 kilometers and is situated between North Stradbroke Island and the mainland. Home to evocatively named landmarks such as Kinbbinkibbinwa Point, Ooncooncoo Bay and the Whistling Kite Wetlands, Russell (Canaipa) has a rich history; originally inhabited by indigenous residents later limeburners, timbergetters, oystermen and sugar, fruit and cotton farmers of yesteryear called the island home.

We now have a range of facilities and services that include an RSL and Bowls Club, a shopping center that includes a Supa IGA, post office, bakery and hair dresser. We also have a police station, ambulance center, public swimming pool, primary school, child care centre hardware store, petrol station, vet, pet store, and several great cafes. There is also a medical center, pathology collection center and pharmacy.

The waters around the Southern Moreton Bay Islands are a great attraction for boaties of every type, canoeists and fisherman. For tourists, tripadvisor suggests that visitors enjoy our beautiful sunrises and sunsets from our coastline or parks, the biking and walking trails. We also have a number of Galleries, markets scheduled on a regular basis and swimming pool. [weekendnotes.com](http://weekendnotes.com) lists Russell island as number 4 in the top places to Kayak in Brisbane

Disclaimer: All information contained herein is gathered from sources we consider to be reliable. However, we cannot guarantee or give any warranty about the information



**LJ Hooker Property Centre**  
**(07) 3286 2500**

**Disclaimer:** All information contained therein is gathered from relevant third parties sources. We cannot guarantee or give any warranty about the information provided. Interested parties must rely solely on their own enquiries.

provided and interested parties must solely rely on their own enquiries

## More About this Property

<b>Property ID</b>	BRQ4F2S
<b>Property Type</b>	House
<b>Including</b>	Outdoor Entertaining Waterfront water views boating fishing

### Sue Bloomfield 0408 789 399

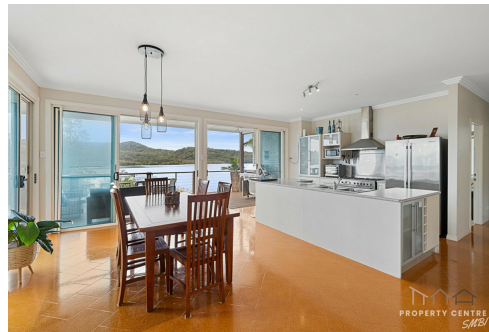
Sales Agent â€“ Canaipa Residential Pty Ltd | sbloomfield@pcbi.com.au

### Donna Pinkerton 0400 997 699

Independent Contractor - Canaipa Residential Pty Ltd | dpinkerton@ljhpropertycentre.com.au

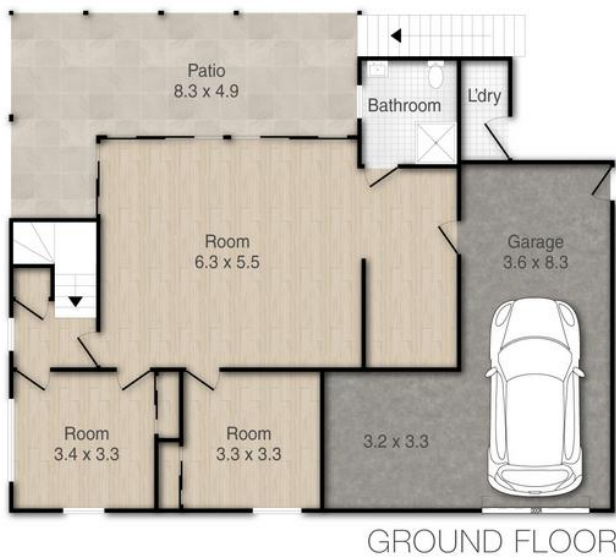
### LJ Hooker Property Centre (07) 3286 2500

152-164 Shore Street West, Raby Bay, Brisbane QLD 4163  
propertycentre.ljhooker.com.au | hello@ljhpc.com.au



**LJ Hooker Property Centre**  
**(07) 3286 2500**

**Disclaimer:** All information contained therein is gathered from relevant third parties sources. We cannot guarantee or give any warranty about the information provided. Interested parties must rely solely on their own enquiries.



## 99 Wahine Drive, Russell Island

PLEASE NOTE THIS PLAN IS FOR MARKETING PURPOSES AND IS TO BE USED AS A GUIDE ONLY. ALL MARKINGS, MEASUREMENTS, AREAS, AND LAYOUT ARE INDICATIVE ONLY AND INTERESTED PARTIES SHOULD MAKE THEIR OWN ENQUIRIES BEFORE MAKING ANY DECISIONS. FLOOR COVERINGS INDICATED ARE FOR ILLUSTRATIVE PURPOSES ONLY AND MAY NOT ACCURATELY PORTRAY ACTUAL FLOOR COVERINGS OF THE PROPERTY. NO GUARANTEES ARE MADE REGARDING THE INFORMATION CONTAINED IN THIS PLAN AND NO LIABILITY FOR ANY INACCURACIES IS ACCEPTED.