



## Russell Island, 89 Laurel Street

First home? Downsizing? Looking for an investment in sought after area?

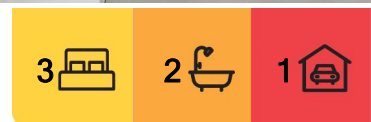
This beauty ticks ALL the boxes! Immaculately presented and surrounded by established gardens 89 Laurel St is the home you thought you would never find.

The Home

- \* Open plan living with tiled floors, floodlight with natural sunshine and neutral decor
- \* Modern kitchen complete with electric cooking, large pantry and crisp white 2 pack cabinetry
- \* Master bedroom: King size with robes, ceiling fan and ensuite boasting over size shower, chic floor to ceiling tiles, frameless glass screen and wall hung vanity
- \* Bedroom 2: Queen size with built in robes and ceiling fan
- \* Bedroom 3: King single size with built in robe and ceiling fan
- \* Master bathroom with crisp white floor to ceiling tiles around shower, frameless screen, toilet and vanity
- \* Internal laundry



**Disclaimer:** All information contained therein is gathered from relevant third parties sources. We cannot guarantee or give any warranty about the information provided. Interested parties must rely solely on their own enquiries.



**For Sale**  
Offers Over \$380,000

**View**  
By Appointment

**Contact**  
**Donna Pinkerton**  
0400 997 699  
dpinkerton@ljhpropertycentre.com.au

**Sue Bloomfield**  
0408 789 399  
sbloomfield@pcbi.com.au

**LJ Hooker Property Centre**  
**(07) 3286 2500**

- \* Covered front deck at entry, perfect for watching the world go by
- \* Private rear deck
- \* Solar Panels
- \* Carport
- \* Garden shed and shade house T

The Block:

- \* 589m2 of premium real estate in a sought after northern island location
- \* Fenced: 3 sides with decorative fencing at the front

The Location:

Aspect: South

To Passenger ferry and vehicle barge: 4 min (1.9km)

To Village shopping: 3 min (1.6km)

To Primary School: 2 min (1.2km)

To Bay Islands Aquatic Centre: 2 min (1.5km)

To Russell Island RSL: 4 min (2.2km)

To Russell Island Bowls Club: 3 min (2.2km)

To Jock Kennedy Boat Ramp: 4 min (2.2km)

To Russell Island Boat Ramp (Wahine Drive): 7 min (5.2km)

To Sandy Beach Recreational Reserve: 10 min (7.7km)

For a copy of the Develo report containing information regarding all overlays and utility placements, just hit the enquire button now.

Russell Island is part of Redland City, Queensland and the largest of the Southern Moreton Bay Islands. It has a length of 8 kilometers and width of nearly 3 kilometers and is situated between North Stradbroke Island and the mainland. Home to evocatively named landmarks such as Kinbbinkibbinwa Point, Ooncooncoo Bay and the Whistling Kite Wetlands, Russell (Canaipa) has a rich history; originally inhabited by indigenous residents later limeburners, timbergetters, oystermen and sugar, fruit and cotton farmers of yesteryear called the island home.

We now have a range of facilities and services that include an RSL and Bowls Club, a shopping center that includes a Supa IGA, post office, bakery and hair dresser. We also have a police station, ambulance center, public swimming pool, primary school, child care centre hardware store, petrol station, vet, pet store, and several great cafes. There is also a medical center, pathology collection center and pharmacy.

The waters around the Southern Moreton Bay Islands are a great attraction for boaties of every type, canoeists and fisherman. For tourists, tripadvisor suggests that visitors enjoy our beautiful sunrises and sunsets from our coastline or parks, the biking and walking trails. We also have a number of Galleries, markets scheduled on a regular basis and swimming pool. weekendnotes.com lists Russell island as number 4 in the top places to Kayak in Brisbane

All information contained herein is gathered from sources we consider to be reliable. However, we cannot guarantee or give any warranty about the information provided. Interested parties must solely rely on their own enquiries.



**LJ Hooker Property Centre**  
**(07) 3286 2500**

**Disclaimer:** All information contained therein is gathered from relevant third parties sources. We cannot guarantee or give any warranty about the information provided. Interested parties must rely solely on their own enquiries.



## More About this Property

<b>Property ID</b>	BRHPF2S
<b>Property Type</b>	House
<b>Land Area</b>	589 m <sup>2</sup>

### Donna Pinkerton 0400 997 699

Independent Contractor - Canaipa Residential Pty Ltd |  
dpinkerton@ljhpropertycentre.com.au

### Sue Bloomfield 0408 789 399

Sales Agent " Canaipa Residential Pty Ltd | sbloomfield@pcbi.com.au

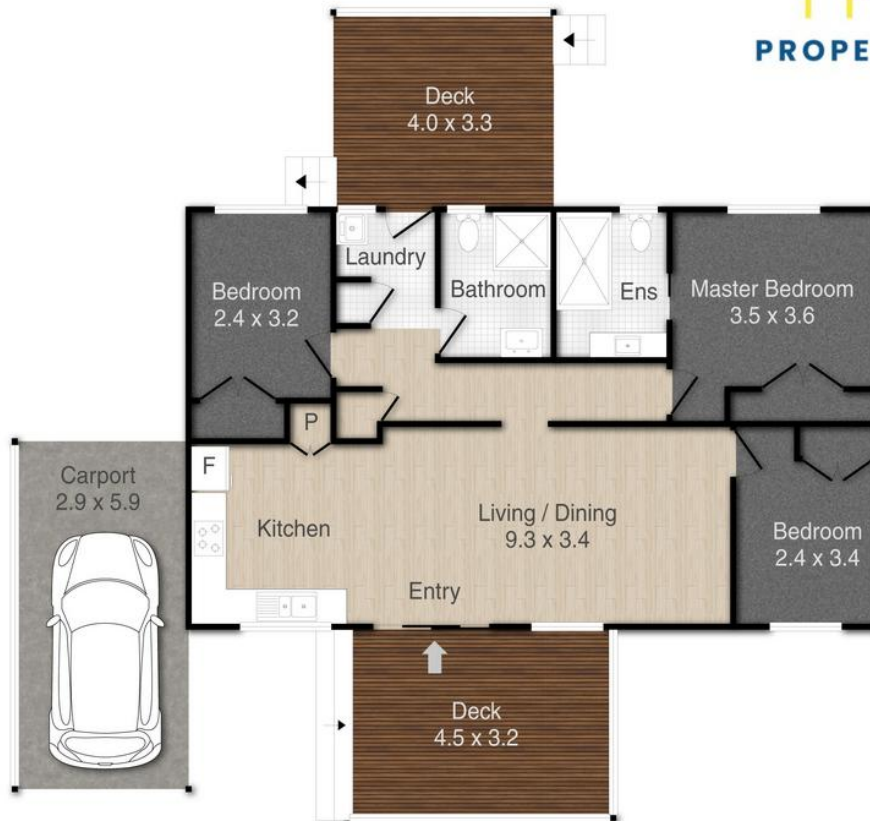
### LJ Hooker Property Centre (07) 3286 2500

152-164 Shore Street West, Raby Bay, Brisbane QLD 4163  
propertycentre.ljhooker.com.au | hello@ljhpc.com.au



**Disclaimer:** All information contained therein is gathered from relevant third parties sources.  
We cannot guarantee or give any warranty about the information provided. Interested parties must rely solely on their own enquiries.

**LJ Hooker Property Centre**  
**(07) 3286 2500**



## 89 Laurel Street, Russell Island

PLEASE NOTE THIS PLAN IS FOR MARKETING PURPOSES AND IS TO BE USED AS A GUIDE ONLY. ALL MARKINGS, MEASUREMENTS, AREAS, AND LAYOUT ARE INDICATIVE ONLY AND INTERESTED PARTIES SHOULD MAKE THEIR OWN ENQUIRIES BEFORE MAKING ANY DECISIONS. FLOOR COVERINGS INDICATED ARE FOR ILLUSTRATIVE PURPOSES ONLY AND MAY NOT ACCURATELY PORTRAY ACTUAL FLOOR COVERINGS OF THE PROPERTY. NO GUARANTEES ARE MADE REGARDING THE INFORMATION CONTAINED IN THIS PLAN AND NO LIABILITY FOR ANY INACCURACIES IS ACCEPTED.