

Russell Island, 61 Barcelona Terrace

SOLD BY DONNA AND SUE - Million dollar views & legal heights underneath

Tell us when you can be here or arrange your virtual viewing! This beauty is now vacant and ready to move into. Million dollar views for a fraction of the price.

The Home:

Open plan living, free flowing to covered deck with those amazing views and breezes

9ft ceilings with low maintenance tile floors throughout

Laminate kitchen, gas cooktop, room for a family size fridge and island bench/breakfast bar

Two good size bedrooms, both with robes and fans, tile floors

Euro style laundry in bathroom

Bathroom with separate bath and shower

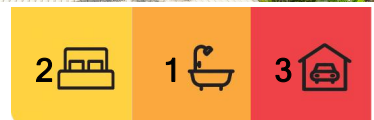
East facing covered deck

Masses of secure storage underneath in addition to carport



Disclaimer: All information contained therein is gathered from relevant third parties sources.

We cannot guarantee or give any warranty about the information provided. Interested parties must rely solely on their own enquiries.



For Sale

Offers Over \$465,000

View

ljhooker.com.au/BRMYF2S

Contact

Donna Pinkerton

0400 997 699

dpinkerton@ljhpropertycentre.com.au

Sue Bloomfield

0408 789 399

sbloomfield@pcbi.com.au

LJ Hooker Property Centre
(07) 3286 2500

New hot water system

Rain water tank

Masses of full legal height secure storage underneath, or perfect for further development

The Block

Elevated 478m2 elevated corner allotment

Fully fenced

East facing

Terraced lawns

The Position

To Passenger ferry and vehicle barge: 7 min (4.9km)

To Village shopping: 7 min (4.6km)

To Bay Islands Aquatic Centre: 6 min (4.5km)

To Primary School: 5 min (4.3km)

To Russell Island RSL: 7 min (5.3km)

To Russell Island Bowls Club: 5 min (3.9km)

To Jock Kennedy Boat Ramp: 8 min (5.2km)

To Russell Island Boat Ramp (Wahine Drive): 1 min (300m)

To Sandy Beach Recreational Reserve:

For a copy of the Develo report containing information regarding all overlays and utility placements, just hit the enquire button now.

Russell Island is part of Redland City, Queensland and the largest of the Southern Moreton Bay Islands. It has a length of 8 kilometers and width of nearly 3 kilometers and is situated between North Stradbroke Island and the mainland. Home to evocatively named landmarks such as Kinbbinkibbinwa Point, Ooncooncoo Bay and the Whistling Kite Wetlands, Russell (Canaipa) has a rich history; originally inhabited by indigenous residents later limeburners, timbergetters, oystermen and sugar, fruit and cotton farmers of yesteryear called the island home.

We now have a range of facilities and services that include an RSL and Bowls Club, a shopping center that includes a Supa IGA, post office, bakery and hair dresser. We also have a police station, ambulance center, public swimming pool, primary school, child care centre hardware store, petrol station, vet, pet store, and several great cafes. There is also a medical center, pathology collection center and pharmacy.

The waters around the Southern Moreton Bay Islands are a great attraction for boaties of every type, canoeists and fisherman. For tourists, tripadvisor suggests that visitors enjoy our beautiful sunrises and sunsets from our coastline or parks, the biking and walking trails. We also have a number of Galleries, markets scheduled on a regular basis and swimming pool. weekendnotes.com lists Russell island as number 4 in the top places to Kayak in Brisbane

All information contained herein is gathered from sources we consider to be reliable. However, we cannot guarantee or give any warranty about the information provided. Interested parties must solely rely on their own enquiries.



LJ Hooker Property Centre
(07) 3286 2500

Disclaimer: All information contained therein is gathered from relevant third parties sources. We cannot guarantee or give any warranty about the information provided. Interested parties must rely solely on their own enquiries.

More About this Property

Property ID	BRMYF2S
Property Type	House
Land Area	478 m ²
Including	Water Tank

Donna Pinkerton 0400 997 699

Independent Contractor - Canaipa Residential Pty Ltd |

dpinkerton@ljhpropertycentre.com.au

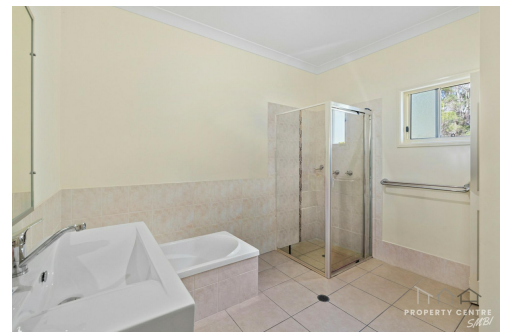
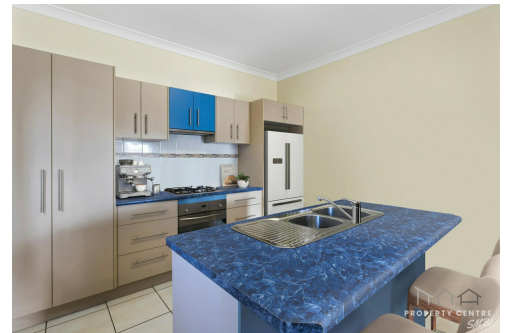
Sue Bloomfield 0408 789 399

Sales Agent " Canaipa Residential Pty Ltd | sbloomfield@pcbi.com.au

LJ Hooker Property Centre (07) 3286 2500

152-164 Shore Street West, Raby Bay, Brisbane QLD 4163

propertycentre.ljhooker.com.au | hello@ljhpc.com.au



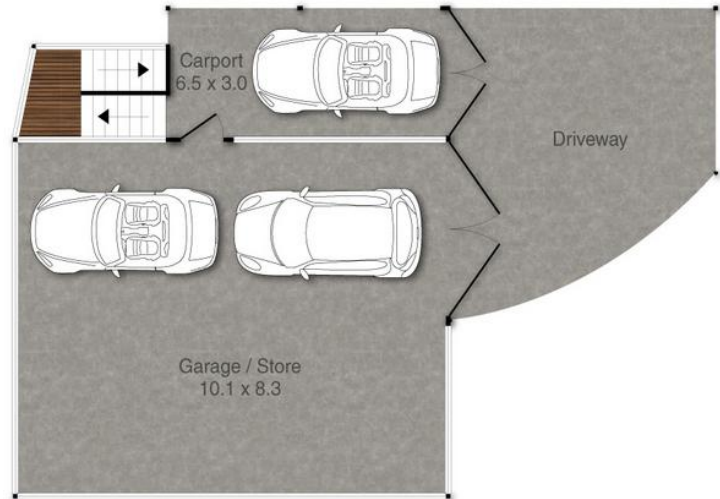
Disclaimer: All information contained therein is gathered from relevant third parties sources.

We cannot guarantee or give any warranty about the information provided. Interested parties must rely solely on their own enquiries.

LJ Hooker Property Centre
(07) 3286 2500



GROUND FLOOR



FIRST FLOOR

61 Barcelona Terrace, Russell Island

PLEASE NOTE THIS PLAN IS FOR MARKETING PURPOSES AND IS TO BE USED AS A GUIDE ONLY. ALL MARKINGS, MEASUREMENTS, AREAS, AND LAYOUT ARE INDICATIVE ONLY AND INTERESTED PARTIES SHOULD MAKE THEIR OWN ENQUIRIES BEFORE MAKING ANY DECISIONS. FLOOR COVERINGS INDICATED ARE FOR ILLUSTRATIVE PURPOSES ONLY AND MAY NOT ACCURATELY PORTRAY ACTUAL FLOOR COVERINGS OF THE PROPERTY. NO GUARANTEES ARE MADE REGARDING THE INFORMATION CONTAINED IN THIS PLAN AND NO LIABILITY FOR ANY INACCURACIES IS ACCEPTED.