



Russell Island, 32 Diamond Street

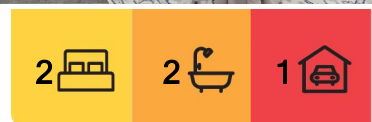
A DIAMOND IN THE BUSH

Escape the hustle and bustle on Russell in this brand new home with nothing to do except, unpack, pour a wine and enjoy the local bushland from your deck. Great investment property, first home owner or those wishing to downsize.

- * 2 x king size bedrooms with built in robes
- * master with ensuite
- * main bathroom off living
- * New York style laundry
- * large timber deck full length of home
- * spacious pantry
- * open plan kitchen/dining/lounge
- * island bench in kitchen
- * freshly laid luscious turf to front yard.
- * blinds throughout



Disclaimer: All information contained therein is gathered from relevant third parties sources. We cannot guarantee or give any warranty about the information provided. Interested parties must rely solely on their own enquiries.



For Sale
SOLD BY SUE & DONNA

View
ljhooker.com.au/BRN6F2S

Contact
Sue Bloomfield
0408 789 399
sbloomfield@pcbi.com.au
Donna Pinkerton
0400 997 699
dpinkerton@ljhpropertycentre.com.au

LJ Hooker Property Centre
(07) 3286 2500

* air conditioning in living

Distances:

5 min drive or 3.2 klm to Ferry Terminal

6 min drive or 3.5 klm to RSL

4 min drive or 2.2 klm to Bowls Club

5 min drive or 3.7 klm to Wahine Boat Ramp

If this awesome property ticks some or all of your boxes please call and make an appointment to inspect asap as this property wont last!

Russell Island is part of Redland City, Queensland and the largest of the Southern Moreton Bay Islands. It has a length of 8 kilometers and width of nearly 3 kilometers and is situated between North Stradbroke Island and the mainland. Home to evocatively named landmarks such as Kinbbinkibbinwa Point, Ooncooncoo Bay and the Whistling Kite Wetlands, Russell (Canaipa) has a rich history; originally inhabited by indigenous residents later lime burners, timber getters, oyster men and sugar, fruit and cotton farmers of yesteryear called the island home.

We now have a range of facilities and services that include and RSL and Bowls Club, a shopping center that includes a Supa IGA, post office, bakery and hair dresser. We also have a police station, ambulance center, public swimming pool, primary school, child care centre hardware store, petrol station, vet, pet store, and several great cafes. There is also a medical center, pathology collection center and pharmacy.

The waters around the Southern Moreton Bay Islands are a great attraction for boaties of every type, canoeists and fisherman. For tourists, trip advisor suggests that visitors enjoy our beautiful sunrises and sunsets from our coastline or parks, the biking and walking trails. We also have a number of Galleries, markets scheduled on a regular basis and swimming pool. weekendnotes.com lists Russell island as number 4 in the top places to Kayak in Brisbane

All information contained herein is gathered from sources we consider to be reliable. However, we cannot guarantee or give any warranty about the information provided. Interested parties must solely rely on their own enquiries.



LJ Hooker Property Centre
(07) 3286 2500

Disclaimer: All information contained therein is gathered from relevant third parties sources. We cannot guarantee or give any warranty about the information provided. Interested parties must rely solely on their own enquiries.

More About this Property

Property ID	BRN6F2S
Property Type	House
Including	Outdoor Entertaining

Sue Bloomfield 0408 789 399

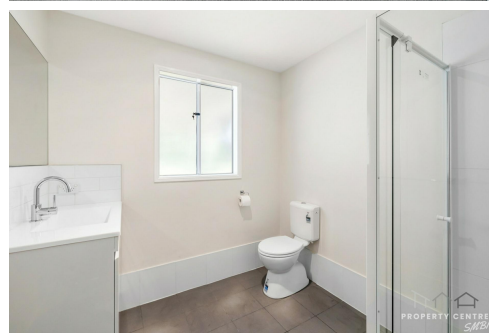
Sales Agent â€“ Canaipa Residential Pty Ltd | sbloomfield@pcbi.com.au

Donna Pinkerton 0400 997 699

Independent Contractor - Canaipa Residential Pty Ltd |
dpinkerton@ljhpropertycentre.com.au

LJ Hooker Property Centre (07) 3286 2500

152-164 Shore Street West, Raby Bay, Brisbane QLD 4163
propertycentre.ljhooker.com.au | hello@ljhpc.com.au



Disclaimer: All information contained therein is gathered from relevant third parties sources.
We cannot guarantee or give any warranty about the information provided. Interested parties must rely solely on their own enquiries.

LJ Hooker Property Centre
(07) 3286 2500



32 Diamond Street, Russell Island

PLEASE NOTE THIS PLAN IS FOR MARKETING PURPOSES AND IS TO BE USED AS A GUIDE ONLY. ALL MARKINGS, MEASUREMENTS, AREAS, AND LAYOUT ARE INDICATIVE ONLY AND INTERESTED PARTIES SHOULD MAKE THEIR OWN ENQUIRIES BEFORE MAKING ANY DECISIONS. FLOOR COVERINGS INDICATED ARE FOR ILLUSTRATIVE PURPOSES ONLY AND MAY NOT ACCURATELY PORTRAY ACTUAL FLOOR COVERINGS OF THE PROPERTY. NO GUARANTEES ARE MADE REGARDING THE INFORMATION CONTAINED IN THIS PLAN AND NO LIABILITY FOR ANY INACCURACIES IS ACCEPTED.