

## Russell Island, 29 Hume Street

Brand New and Nothing To Do

Flexible floorplan, quality fittings and finishes and great outdoor living areas make this the perfect home for the Buyer looking to move in and start their easy going Island lifestyle asap.

Cute as a button with room for the boat or caravan under cover and fabulous established gardens you wont believe your luck it really is a move in and unpack opportunity.

The Home:

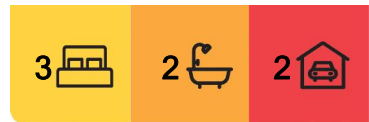
Lower level

Open plan living dining opening to front deck

Kitchen with neutral 2 pak cabinetry, timber look benchtops, room for a family size fridge, electric cooktop, rangehood and stainless steel dishwasher, fresh white subway tiles

Opportunity for walk in pantry

Built in book shelf



**For Sale**

Offers Over \$440,000

**View**

By Appointment

**Contact**

**Sue Bloomfield**

0408 789 399

sbloomfield@pcbi.com.au

**Donna Pinkerton**

0400 997 699

dpinkerton@ljhpropertycentre.com.au



**LJ Hooker Property Centre**  
**(07) 3286 2500**

**Disclaimer:** All information contained therein is gathered from relevant third parties sources.

We cannot guarantee or give any warranty about the information provided. Interested parties must rely solely on their own enquiries.

Bedroom 1 or Extra living area with access to covered front deck

Bathroom with shower and floor to ceiling tiles, wall hung vanity

Euro style laundry

Timber look flooring

Timber staircase

Upstairs

2 bedrooms with built in robes

Central bathroom with oversize shower, neutral decore and wall hug vanity

The Block

594m2 with colourbond fencing to back and sides

Fully established landscaping

Concrete driveway

Extra height double carport

All weather covered pergola area at rear for entertaining

The Location

To Passenger ferry and vehicle barge: 9 min (5.4km)

To Village shopping: 7 min (5.1 km)

To Bay Islands Aquatic Centre: 6 min (4.9km)

To Primary School: 6 min (4.7km)

To Russell Island RSL: 7 Min (5.7km)

To Russell Island Bowls Club: 5 min (4.4km)

To Jock Kennedy Boat Ramp: 8 min (5.6km)

To Russell Island Boat Ramp (Wahine Drive): 3 min (1.5km)

For a copy of the Develo report containing information regarding all overlays and utility placements, just hit the enquire button now.

Russell Island is part of Redland City, Queensland and the largest of the Southern Moreton Bay Islands. It has a length of 8 kilometers and width of nearly 3 kilometers and is situated between North Stradbroke Island and the mainland. Home to evocatively named landmarks such as Kinbinkibbinwa Point, Ooncooncoo Bay and the Whistling Kite Wetlands, Russell (Canaipa) has a rich history; originally inhabited by indigenous residents later limeburners, timbergetters, oystermen and sugar, fruit and cotton farmers of yesteryear called the island home.

We now have a range of facilities and services that include and RSL and Bowls Club, a shopping center that includes a Supa IGA, post office, bakery and hair dresser. We also have a police station, ambulance center, public swimming pool, primary school, child care centre hardware store, petrol station, vet, pet store, and several great cafes. There is also a medical center, pathology collection center and pharmacy.

The waters around the Southern Moreton Bay Islands are a great attraction for boaties of every type, canoeists and fisherman. For tourists, tripadvisor suggests that visitors enjoy our beautiful sunrises and sunsets from our coastline or parks, the biking and walking trails. We also have a number of Galleries, markets scheduled on a regular basis and swimming pool. weekendnotes.com lists Russell island as number 4 in the top places to



**LJ Hooker Property Centre**  
**(07) 3286 2500**

**Disclaimer:** All information contained therein is gathered from relevant third parties sources. We cannot guarantee or give any warranty about the information provided. Interested parties must rely solely on their own enquiries.

## Kayak in Brisbane

All information contained herein is gathered from sources we consider to be reliable. However, we cannot guarantee or give any warranty about the information provided. Interested parties must solely rely on their own enquiries.

## More About this Property

<b>Property ID</b>	BKDKF2S
<b>Property Type</b>	House
<b>Land Area</b>	594 m <sup>2</sup>
<b>Including</b>	Deck Dishwasher

### Sue Bloomfield 0408 789 399

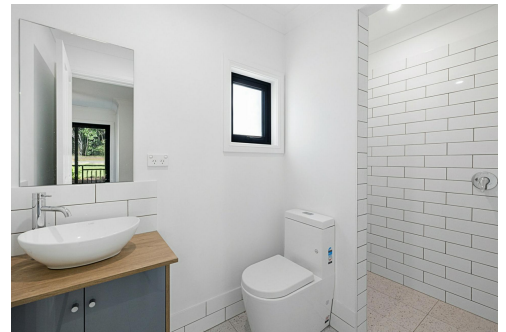
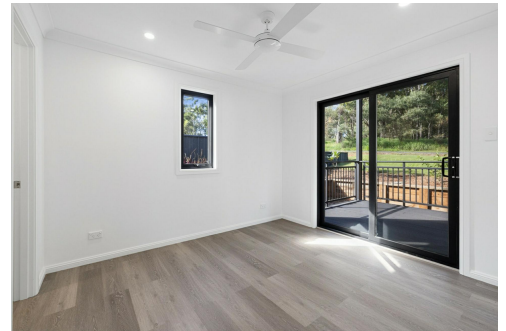
Sales Agent â€“ Canaipa Residential Pty Ltd | sbloomfield@pcbi.com.au

### Donna Pinkerton 0400 997 699

Independent Contractor - Canaipa Residential Pty Ltd | dpinkerton@ljhpropertycentre.com.au

### LJ Hooker Property Centre (07) 3286 2500

152-164 Shore Street West, Raby Bay, Brisbane QLD 4163  
propertycentre.ljhooker.com.au | hello@ljhpc.com.au



**Disclaimer:** All information contained therein is gathered from relevant third parties sources. We cannot guarantee or give any warranty about the information provided. Interested parties must rely solely on their own enquiries.

**LJ Hooker Property Centre  
(07) 3286 2500**



## 29 Hume Street, Russell Island

PLEASE NOTE THIS PLAN IS FOR MARKETING PURPOSES AND IS TO BE USED AS A GUIDE ONLY. ALL MARKINGS, MEASUREMENTS, AREAS, AND LAYOUT ARE INDICATIVE ONLY AND INTERESTED PARTIES SHOULD MAKE THEIR OWN ENQUIRIES BEFORE MAKING ANY DECISIONS. FLOOR COVERINGS INDICATED ARE FOR ILLUSTRATIVE PURPOSES ONLY AND MAY NOT ACCURATELY PORTRAY ACTUAL FLOOR COVERINGS OF THE PROPERTY. NO GUARANTEES ARE MADE REGARDING THE INFORMATION CONTAINED IN THIS PLAN AND NO LIABILITY FOR ANY INACCURACIES IS ACCEPTED.