



Russell Island, 28 Oasis Drive

HUGE WOW FACTOR STUNNING WATERFRONT VIEWS DIRECT WATER ACCESS

Nestled on a 647 sqm block, this waterfront residence offers a tranquil escape with breathtaking water views. Designed for both relaxation and entertainment, this spacious home features three bedrooms and three bathrooms, ensuring comfort and privacy for all residents. The open-plan living areas seamlessly connect to the outdoor spaces, creating a perfect flow for gatherings. Couples and first home buyers will find this property a delightful retreat that promising a peaceful lifestyle.

The highlight of this property is its luxurious in-ground swimming pool, ideal for enjoying sunny days and hosting poolside events. The water views overlooking North Stradbroke Island provide a picturesque backdrop, making every moment at home feel like a vacation living in your own private resort.

Upper level:



Disclaimer: All information contained therein is gathered from relevant third parties sources. We cannot guarantee or give any warranty about the information provided. Interested parties must rely solely on their own enquiries.

3

3

3

For Sale

Offers Over \$950,000

View

By Appointment

Contact

Sue Bloomfield

0408 789 399

sbloomfield@pcbi.com.au

Donna Pinkerton

0400 997 699

dpinkerton@pcbi.com.au

LJ Hooker Property Centre
(07) 3286 2500

- * fully ducted air conditioning
- * 2 generous bedrooms with water views
- * built in cupboards
- * 2 bathrooms with toilets
- * open plan kitchen, lounge, dining ALL with water views
- * polished timber floors
- * large Mod Wood low maintenance deck
- * Island bench with gas cook top and oven
- * dishwasher
- * pantry
- * windows that open to deck
- * bi fold windows facing the water - catch the beautiful breezes
- * ceiling fans throughout

Lower level:

- * 1 bedroom with ensuite
- * laundry/kitchenette
- * large storage cupboard
- * rumpus room/second living area
- * patio off rumpus

Additional:

- * drive through garage for boat/jet ski launching
- * shed beside garage for mowers etc
- * inground swimming pool
- * 2 boat/ski launching tracks
- * deck with roof over and 2 x kings awnings
- * 36 Solar Panels
- * fully fenced

This property is a must to inspect if waterfront living is on your list! Call now to arrange a private inspection today.

All information contained herein is gathered from sources we consider to be reliable.

However, we cannot guarantee or give any warranty about the information provided.

Interested parties must solely rely on their own enquiries.



LJ Hooker Property Centre
(07) 3286 2500

Disclaimer: All information contained therein is gathered from relevant third parties sources.
We cannot guarantee or give any warranty about the information provided. Interested parties must rely solely on their own enquiries.

More About this Property

Property ID	BSP6F2S
Property Type	House
House Size	314 m2
Land Area	647 m2
Including	Air Conditioning Toilets (3)

Sue Bloomfield 0408 789 399

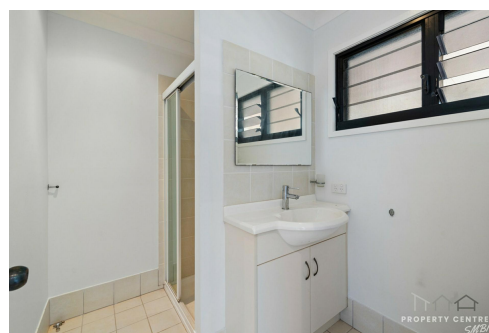
Sales Agent â€“ Canaipa Residential Pty Ltd | sbloomfield@pcbi.com.au

Donna Pinkerton 0400 997 699

Independent Contractor - Canaipa Residential Pty Ltd | dpinkerton@pcbi.com.au

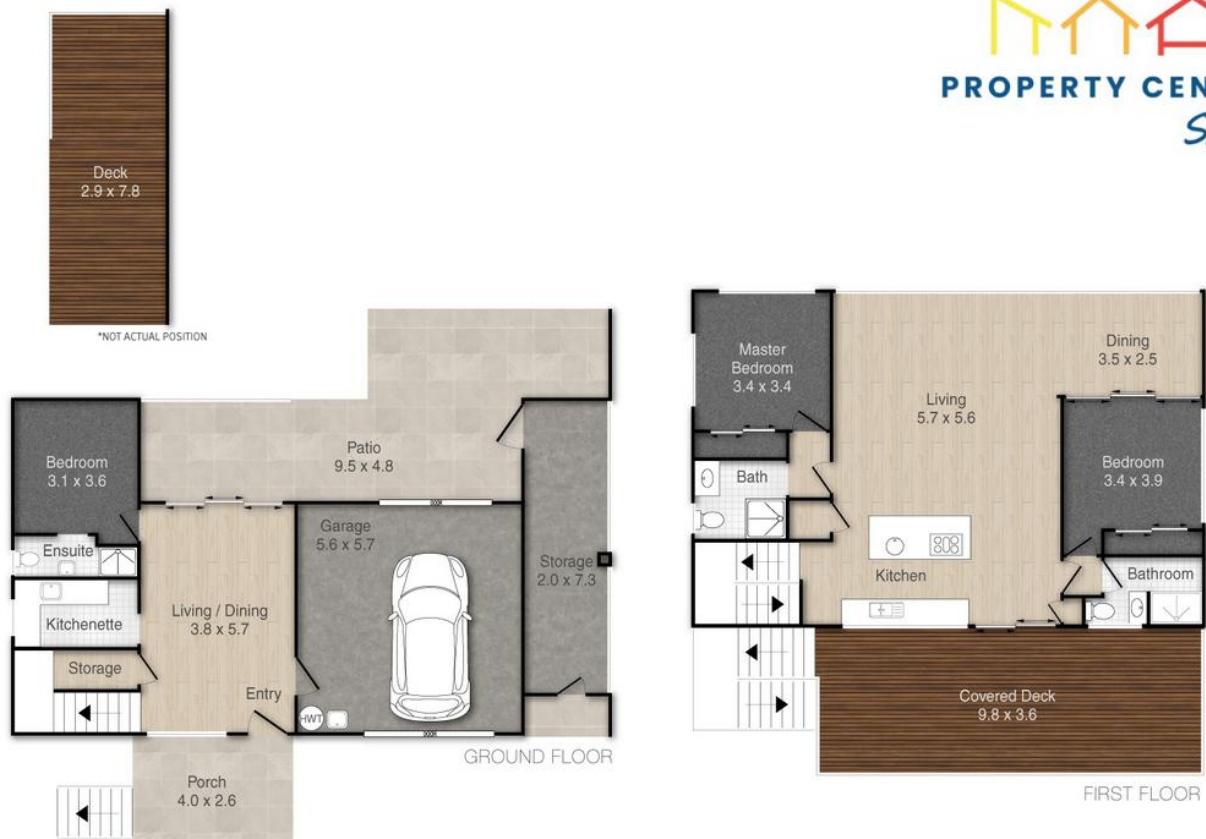
LJ Hooker Property Centre (07) 3286 2500

152-164 Shore St West, Raby Bay, Brisbane Qld 4163
propertycentre.ljhooker.com.au | hello@ljhpc.com.au



Disclaimer: All information contained therein is gathered from relevant third parties sources.
We cannot guarantee or give any warranty about the information provided. Interested parties must rely solely on their own enquiries.

LJ Hooker Property Centre
(07) 3286 2500



28 Oasis Drive, Russell Island

Approx Covered Area: 314m²



PLEASE NOTE THIS PLAN IS FOR MARKETING PURPOSES AND IS TO BE USED AS A GUIDE ONLY. ALL MARKINGS, MEASUREMENTS, AREAS, AND LAYOUT ARE INDICATIVE ONLY AND INTERESTED PARTIES SHOULD MAKE THEIR OWN ENQUIRIES BEFORE MAKING ANY DECISIONS. FLOOR COVERINGS INDICATED ARE FOR ILLUSTRATIVE PURPOSES ONLY AND MAY NOT ACCURATELY PORTRAY ACTUAL FLOOR COVERINGS OF THE PROPERTY. NO GUARANTEES ARE MADE REGARDING THE INFORMATION CONTAINED IN THIS PLAN AND NO LIABILITY FOR ANY INACCURACIES IS ACCEPTED.