



Russell Island, 2 Billambang Street

Virtual Open House Saturday 20/04 12:30, Call for details on how to join

Step inside and be prepared to be impressed. Chic decor, immaculate presentation and quality abound throughout the flexible free flowing floorplan. Fantastic position too, just minutes from village shopping and the ferry. Island living just got even better!

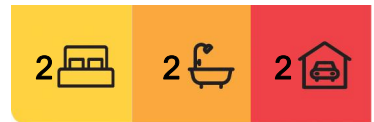
The Home

Bold architect design with covered breezeway between provides flexibility for those wanting to work from home or entertain guests while maintaining privacy or provide additional space for teenagers or extended family

Luxurious, generous open plan living with raked ceilings, electric fireplace and



Disclaimer: All information contained therein is gathered from relevant third parties sources. We cannot guarantee or give any warranty about the information provided. Interested parties must rely solely on their own enquiries.



For Sale

Offers over \$470,000

View

By Appointment

Contact

Donna Pinkerton

0400 997 699

dpinkerton@ljhpropertycentre.com.au

Sue Bloomfield

0408 789 399

sbloomfield@pcbi.com.au

LJ Hooker Property Centre
(07) 3286 2500

chic yet understated lighting, air conditioning and fans
State of the art appliances including 5 burner Smeg gas cooktop, electric oven,
Devanti rangehood and steam microwave, handmade feature tiles to
splashback, stone benchtops
King size master bedroom with walk in robe and resort size ensuite complete with
bathtub and rain water shower head and floor to ceiling tiles
Bedroom 2 has built in robes and direct access to the breezeway and study
(consulting room, home office, third bedroom or second private living area)
Thoughtfully designed main bathroom and laundry combination
Covered breeze way- perfect spot for year-round chill-laxing or a BBQ with
friends
Separate double garage with additional off street parking for another 2 vehicles
Water tanks

The Block

536m2 corner position

Fully fenced

Low maintenance established gardens

The Location

To Passenger ferry and vehicle barge: 6 min (2.9km)

To Village shopping: 5 min (2.6km)

To Bay Islands Aquatic Centre: 4 min (2.5km)

To Primary School: 4 min (2.3km)

To Russell Island RSL: 5 min (3.3km)

To Russell Island Bowls Club: 3 min (1.4km)

To Jock Kennedy Boat Ramp: 5 min (3.2km)

To Russell Island Boat Ramp (Wahine Drive): 6 min (4.5km)

To Sandy Beach Recreational Reserve: 9 min (7km)

For a copy of the Develo report containing information regarding all overlays and utility placements, just hit the enquire button now.

Russell Island is part of Redland City, Queensland and the largest of the Southern Moreton Bay Islands. It has a length of 8 kilometers and width of nearly 3 kilometers and is situated between North Stradbroke Island and the mainland. Home to evocatively named landmarks such as Kinbbinkibbinwa Point, Ooncooncoo Bay and the Whistling Kite Wetlands, Russell (Canaipa) has a rich history; originally inhabited by indigenous residents later limeburners, timbergetters, oystermen and sugar, fruit and cotton farmers of yesteryear called the island home.

We now have a range of facilities and services that include an RSL and Bowls Club, a shopping center that includes a Supa IGA, post office, bakery and hair dresser. We also have a police station, ambulance center, public swimming pool, primary school, child care centre hardware store, petrol station, vet, pet store, and several great cafes. There is also a medical center, pathology collection center and pharmacy.

The waters around the Southern Moreton Bay Islands are a great attraction for



LJ Hooker Property Centre
(07) 3286 2500

Disclaimer: All information contained therein is gathered from relevant third parties sources. We cannot guarantee or give any warranty about the information provided. Interested parties must rely solely on their own enquiries.

boats of every type, canoeists and fisherman. For tourists, tripadvisor suggests that visitors enjoy our beautiful sunrises and sunsets from our coastline or parks, the biking and walking trails. We also have a number of Galleries, markets scheduled on a regular basis and swimming pool. weekendnotes.com lists Russell island as number 4 in the top places to Kayak in Brisbane

All information contained herein is gathered from sources we consider to be reliable. However, we cannot guarantee or give any warranty about the information provided. Interested parties must solely rely on their own enquiries.

More About this Property

Property ID	BRNVF2S
Property Type	House
Land Area	536 m ²
Including	Study Air Conditioning Toilets (2) Fire Place Courtyard Outdoor Entertaining Workshop Built-in-Robes Secure Parking Fully Fenced Grey Water System Water Tank

Donna Pinkerton 0400 997 699

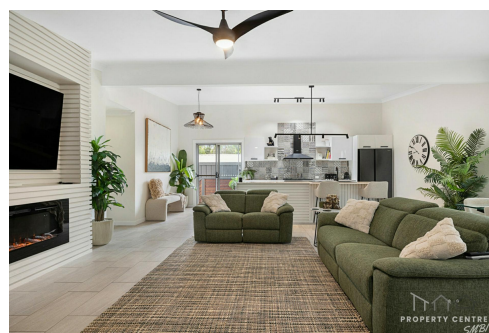
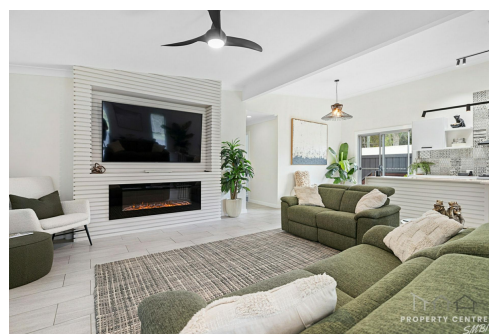
Independent Contractor - Canaipa Residential Pty Ltd |
dpinkerton@ljhpropertycentre.com.au

Sue Bloomfield 0408 789 399

Sales Agent - Canaipa Residential Pty Ltd | sbloomfield@pcbi.com.au

LJ Hooker Property Centre (07) 3286 2500

152-164 Shore Street West, Raby Bay, Brisbane QLD 4163
propertycentre.ljhooker.com.au | hello@ljhpc.com.au



**LJ Hooker Property Centre
(07) 3286 2500**

Disclaimer: All information contained therein is gathered from relevant third parties sources. We cannot guarantee or give any warranty about the information provided. Interested parties must rely solely on their own enquiries.



2 Billambang Street, Russell Island

PLEASE NOTE THIS PLAN IS FOR MARKETING PURPOSES AND IS TO BE USED AS A GUIDE ONLY. ALL MARKINGS, MEASUREMENTS, AREAS, AND LAYOUT ARE INDICATIVE ONLY AND INTERESTED PARTIES SHOULD MAKE THEIR OWN ENQUIRIES BEFORE MAKING ANY DECISIONS. FLOOR COVERINGS INDICATED ARE FOR ILLUSTRATIVE PURPOSES ONLY AND MAY NOT ACCURATELY PORTRAY ACTUAL FLOOR COVERINGS OF THE PROPERTY. NO GUARANTEES ARE MADE REGARDING THE INFORMATION CONTAINED IN THIS PLAN AND NO LIABILITY FOR ANY INACCURACIES IS ACCEPTED.