



Russell Island, 146 Jackson Road

Sweeping Bay Views, Space To Spare

The plans have changed midway through this quality renovation meaning you minimise the effort while maximising your personal touch! Sought after location with magnificent water views to the west and park and playground opposite.

The House:

Fresh paint, new floor coverings, new light fittings, new window coverings

Study or formal entry- more than enough room for a home office

Enclosed wrap around deck means extra living room inside and you can enjoy the views no matter what the weather

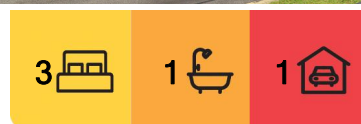
Neat and tidy kitchen, gas cooking, abundance of bench space, pantry and breakfast bar

Master bedroom with new carpet, built in robe and beautiful big windows, ceiling fan

Centrally located bathroom

Bedroom 2 with timber floors and access to rear deck, ceiling fan

Bedroom 3, robe, ceiling fan



For Sale

Offers over \$600,000

View

By Appointment

Contact

Donna Pinkerton

0400 997 699

dpinkerton@ljhpropertycentre.com.au

Sue Bloomfield

0408 789 399

sbloomfield@pcbi.com.au



Disclaimer: All information contained therein is gathered from relevant third parties sources.

We cannot guarantee or give any warranty about the information provided. Interested parties must rely solely on their own enquiries.

LJ Hooker Property Centre
(07) 3286 2500

Loads of storage
Internal laundry with extra toilet
Rear deck

The Block

Partially fenced

Elevated allotment with panoramic water views

539m² corner allotment

Garden shed, workshop, carport

Dimensions:

Jackson Road Frontage: 15.6m,

Western boundary: 37.9m

Eastern boundary: 39.3m

Southern boundary: 12.8m

The Location

To Passenger ferry and vehicle barge: 5 min (2.9km)

To Village shopping: 5 min (2.7km)

To Bay Islands Aquatic Centre: 4 min (2.5km)

To Primary School: 4 min (2.3km)

To Russell Island RSL: 5 min (3.3km)

To Russell Island Bowls Club: 2 min (800m)

To Jock Kennedy Boat Ramp: 6 min (3.2km)

To Russell Island Boat Ramp (Wahine Drive): 7 min (5km)

To Sandy Beach Recreational Reserve: 10min (7.5km)

For a copy of the Develo report containing information regarding all overlays and utility placements, just hit the enquire button now.

Russell Island is part of Redland City, Queensland and the largest of the Southern Moreton Bay Islands. It has a length of 8 kilometers and width of nearly 3 kilometers and is situated between North Stradbroke Island and the mainland. Home to evocatively named landmarks such as Kinbinkibbinwa Point, Ooncooncoo Bay and the Whistling Kite Wetlands, Russell (Canaipa) has a rich history; originally inhabited by indigenous residents later limeburners, timbergetters, oystermen and sugar, fruit and cotton farmers of yesteryear called the island home.

We now have a range of facilities and services that include an RSL and Bowls Club, a shopping center that includes a Supa IGA, post office, bakery and hair dresser. We also have a police station, ambulance center, public swimming pool, primary school, child care centre, hardware store, petrol station, vet, pet store, and several great cafes. There is also a medical center, pathology collection center and pharmacy.

The waters around the Southern Moreton Bay Islands are a great attraction for boaties of every type, canoeists and fisherman. For tourists, tripadvisor suggests that visitors enjoy our beautiful sunrises and sunsets from our coastline or parks, the biking and walking trails. We also have a number of Galleries, markets scheduled on a regular basis and swimming pool. weekendnotes.com lists Russell island as number 4 in the top places to Kayak in Brisbane



LJ Hooker Property Centre
(07) 3286 2500

Disclaimer: All information contained therein is gathered from relevant third parties sources. We cannot guarantee or give any warranty about the information provided. Interested parties must rely solely on their own enquiries.

All information contained herein is gathered from sources we consider to be reliable. However, we cannot guarantee or give any warranty about the information provided. Interested parties must solely rely on their own enquiries.

More About this Property

Property ID	BRVBF2S
Property Type	House
Land Area	539 m ²
Including	Study Workshop Built-in-Robes

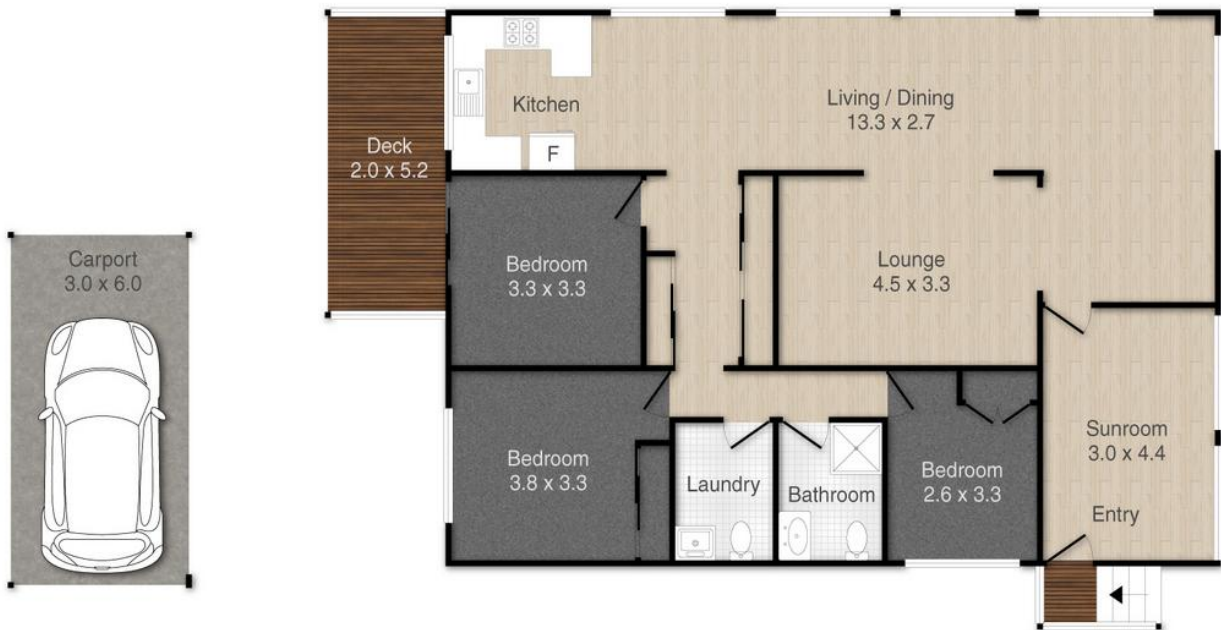
Donna Pinkerton 0400 997 699
Independent Contractor - Canaipa Residential Pty Ltd |
dpinkerton@ljhpropertycentre.com.au
Sue Bloomfield 0408 789 399
Sales Agent – Canaipa Residential Pty Ltd | sbloomfield@pcbi.com.au

LJ Hooker Property Centre (07) 3286 2500
152-164 Shore Street West, Raby Bay, Brisbane QLD 4163
propertycentre.ljhooker.com.au | hello@ljhpc.com.au



Disclaimer: All information contained therein is gathered from relevant third parties sources. We cannot guarantee or give any warranty about the information provided. Interested parties must rely solely on their own enquiries.

LJ Hooker Property Centre
(07) 3286 2500



146 Jackson Road, Russell Island

PLEASE NOTE THIS PLAN IS FOR MARKETING PURPOSES AND IS TO BE USED AS A GUIDE ONLY. ALL MARKINGS, MEASUREMENTS, AREAS, AND LAYOUT ARE INDICATIVE ONLY AND INTERESTED PARTIES SHOULD MAKE THEIR OWN ENQUIRIES BEFORE MAKING ANY DECISIONS. FLOOR COVERINGS INDICATED ARE FOR ILLUSTRATIVE PURPOSES ONLY AND MAY NOT ACCURATELY PORTRAY ACTUAL FLOOR COVERINGS OF THE PROPERTY. NO GUARANTEES ARE MADE REGARDING THE INFORMATION CONTAINED IN THIS PLAN AND NO LIABILITY FOR ANY INACCURACIES IS ACCEPTED.